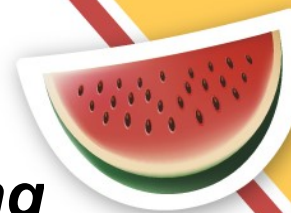


JUNE | 2023

Lenawee Department on Aging



MONDAY

TUESDAY

WEDNESDAY

THURSDAY

FRIDAY

29 Closed for Memorial Day	30 Orange Chicken Fried Rice Oriental Blend Vegetable Tropical Fruit Fortune Cookie	31 Almandine Fish Scalloped Potatoes Prince Charles Vegetable Pineapple	1 Beef Ravioli Midori Blend Vegetable Sourdough Bread Raisins	2 Sloppy Joes Potato Wedges Broccoli Mandarin Orange Jell-O
5 Pepper Steak Mashed Potatoes Capri Vegetable Cherry Yogurt	6 Monte Cristo Sliders Scandinavian Vegetable Papaya and Mango	7 Roasted Vegetable Lasagna Far East Vegetable Garlic Bread Prune Juice	8 Chicken Caesar Salad Pickled Beets Cinnamon Swirl Bread Sliced Apples	9 Cowboy Beans Brussel Sprouts Corn Bread Mandarin Oranges
12 Cornmeal Breaded Catfish Wild Rice Baked Squash Mixed Fruit	13 Sweet & Sour Pork over Egg Noodles Asparagus Pears	14 BLT Sandwich Broccoli Salad Cherries	15 Meatloaf Cheesy Potatoes Green Beans Strawberry Short Cake	16 Chicken Cordon Bleu Casserole Stewed Tomatoes Grain Bread Peach Yogurt
19 Closed for Juneteenth	20 Pizza Calzone Normandy Blend Vegetable Grapes	21 Ham Sweet Potatoes Zucchini Orange/Pineapple Sorbet	22 Chili Topped Potato Spinach Peaches	23 Tuna Salad on bed of lettuce Roasted Corn Salad Rye Bread Cantaloupe
26 Boiled Dinner Kielbasa, Cabbage, Carrots and Potatoes Applesauce	27 Chicken Tenders Tater Tots Kyoto Blend Vegetable Strawberry Yogurt	28 Taco Salad Beef, Bean, Lettuce, Tomato and Cheese Tortilla Chips Blueberries	29 Potato Crusted Tilapia Rice Pilaf Peas and Onions Mandarin Oranges	30 Pulled Pork on Kaiser Bun Cauliflower Raspberry Sherbet

Suggested Donation is \$3.00 for anyone age 60 and older. \$4.00 for those under age 60 who participate in site meals

To cancel meals or make changes to your Home Delivered Meal pattern please call 264-5280. Please call at least 24 hours in advance when you will not be home to accept your meal.

Milk is served with meal.

Menu subject to change due to product availability.

To reach the Department on Aging office please call 264-5280

Certified by:

DA Chapel, RDN, COCES

Due to product availability, menu is subject to change.