

2024/2025

Annual Report

A YEAR IN REVIEW



LENAWEE COUNTY

HEALTH DEPARTMENT

1040 S Winter St. Suite 2328
Adrian, MI 49221

517-264-5226
lenaweehd@lenawee.mi.us
lenawehealthdepartment.org

A Message from the Health Officer

A Message from the Health Officer Executive Summary 2025

The Lenawee County Health Department (LCHD) continued to strengthen partnerships, expand community initiatives, and advance a strategic vision to guide the future of public health in our community. On behalf of the Lenawee County Board of Commissioners and the Lenawee County Board of Health, I am pleased to present the Lenawee County Health Department's Annual Report.

Throughout the year, LCHD remained committed to delivering programs that promote the health, safety, and well-being of our residents. Despite an evolving public health landscape, we strengthened collaborations, expanded services, and pursued innovative solutions to support a healthier and safer Lenawee County.

A significant milestone was maintaining our accredited status through the Michigan Local Public Health Accreditation Program following the Cycle 8 site visit. This achievement reflects our continued commitment to meeting rigorous standards that support effective public health practice. We also completed the department's 2025–2030 Strategic Plan, which will guide our priorities and strengthen how we serve and collaborate with the Lenawee County community in the years ahead.

LCHD continued expanding partnerships that improve access to care and address key public health needs. Initiatives included expanding the Rural Health and Minority Outreach Initiative, participating in the Take Control of Your Birth Control campaign to increase access to family planning resources, and continuing harm reduction efforts through safer marijuana use education and increased access to naloxone (Narcan).

Environmental Health efforts also advanced as the county continued implementing the Materials Management Plan. Expanded public education and outreach supported increased community participation in recycling, with additional educational materials provided through a grant from the Michigan Department of Environment, Great Lakes, and Energy (EGLE) and The Recycling Partnership.

These accomplishments reflect the strength of our partnerships and the shared commitment of our community to improving the health and well-being of Lenawee County residents. I am grateful to work alongside a dedicated team of public health professionals and community partners as we continue working toward a healthier and safer Lenawee County.

Monica J. Hunt

Monica Hunt
Health Officer
Lenawee County Health Department



Community Snapshot

Lenawee County is home to nearly 98,000 residents. Understanding our community's demographic and economic profile helps guide program planning, funding priorities, and the delivery of services across the county.



Population:
97,746

Poverty rate:
10.71%

County Seat:
Adrian, Michigan

Median Household Income:
\$70,518

Leading Causes of Death:
Heart Disease and Cancer

Without Health Insurance:
5.8%

Sources:

U.S. Census Bureau, QuickFacts: Lenawee County, Michigan

Michigan Department of Health and Human Services, Vital Statistics

Board of Health

The Board of Health was established in April 1946. The Board of Health identifies public health problems and concerns, establishes priorities, and advises the Board of Commissioners and Health Department regarding community health matters and possible solutions. Board members assist the health department in informing the community and the Board of Commissioners about the department's programs.

Board of Health Members



Dr. Lorrie Tritt, Chairperson



Commissioner Collins, Vice Chair



LeeAnn Minton, Member



Aimrie Ream-Taylor, Member



Darcel Shankle, Member

Strategic Planning

In 2025, we completed a strategic planning process for the next five years. Planning began in June 2025 and included staff engagement throughout the process. During this time, we developed new strategic directions and values. The sections below provide a snapshot of the department’s strategic priorities and guiding values.

Mission

To support health, safety, and well-being for a stronger, more connected community.

Vision

Striving to become a stronger Lenawee County by promoting and sustaining a healthy community.

Strategic Directions

COMMUNITY

Strengthen community trust and partnership through multiple community engagement avenues

FUNDING

Stabilize and diversify funding while maximizing existing resources

WORKFORCE

Maintain a robust workforce by investing in a supported, collaborative, and mission-driven team.

PROGRAM IMPROVEMENT

Modernize programs and policies through evaluation and continuous improvement.

Values

-  **TRANSPARENCY**
Share openly so our community can trust and engage
-  **EQUALITY**
Remove barriers so everyone can achieve their best health.
-  **SAFETY**
Protect physical, emotional, and environmental well-being
-  **RESPONSIVENESS**
Adapt quickly to meet changing needs
-  **RESPECT**
Honor every voice and perspective
-  **COLLABORATION**
Work together for stronger, healthier outcomes.

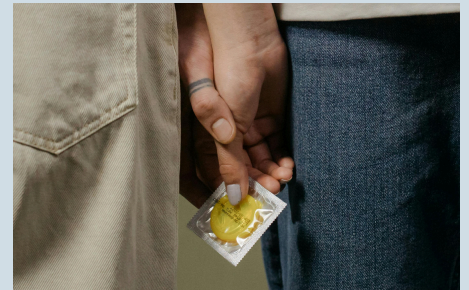
Public Health in Action

Take Control of Your Birth Control

The Lenawee County Health Department partnered with the Michigan Department of Health and Human Services (MDHHS) in the Take Control of Your Birth Control Campaign. This campaign provided our department with Over-the-counter (OTC) oral contraceptive pills, emergency contraception, individually wrapped condoms, and free resources on Family Planning services.

In 2025, LCHD distributed:

- 100 boxes of over-the-counter oral contraceptive pills (Opill)
- 100 boxes of emergency contraception (Plan B)
- 500 individually wrapped condoms
- 100 printed materials and Medicaid Applications



Harm Reduction Initiative

In 2025, 155 Narcan kits were distributed through the Narcan machine.

Kits included Naloxone (Narcan) and instructions on recognizing and responding to an overdose.

Free and anonymous access helps reduce barriers to obtaining life-saving medication.



Promoting Safer Marijuana Use

Our medical marijuana grants help raise awareness of safe storage and safer medical marijuana use. LCHD distributes free lock bags throughout the community at outreach events and marijuana dispensaries.

In 2025, LCHD distributed:

- 1,473 lock bags promoting safe storage practices



Public Health in Action

Rural Health and Minority Outreach Initiative

This initiative aims to improve health outcomes in Lenawee County by reducing barriers to transportation, food, and medication access. After collecting community surveys, three strategies were developed to address barriers related to social determinants of health (SDOH): transportation access, food access, and medication access.

To bridge this gap, the LCHD partnered with Adrian Medical Pharmacy, ProMedica Farms Veggie Mobile, Lenawee Public Transportation Authority, Polly's Country Market, and Marks Trading Company.



Program Impact

767 Social Determinants of Health (SDOH) forms distributed
26% (1 in 4) clients indicated a need for assistance.

The Clothesline Project

In recognition of World No Tobacco Day on May 31, the Lenawee County Health Department, in partnership with the Lenawee YOUTH Council, hosted its annual Clothesline Project at the Human Services Building.

Youth Council members displayed 147 shirts, representing each tobacco-related death in Lenawee County last year. Smoking remains the leading cause of preventable death in the county, claiming more lives than AIDS, alcohol, auto accidents, drugs, opioids, murders, and suicides combined.



Lenawee Youth Council Members



147 shirts displayed representing tobacco-related deaths in Lenawee County.

Communicable Disease Reporting

The following data reflects reported communicable diseases investigated in Lenawee County during Fiscal Year 2025.

Lenawee County Health Department Communicable Disease Report 2025

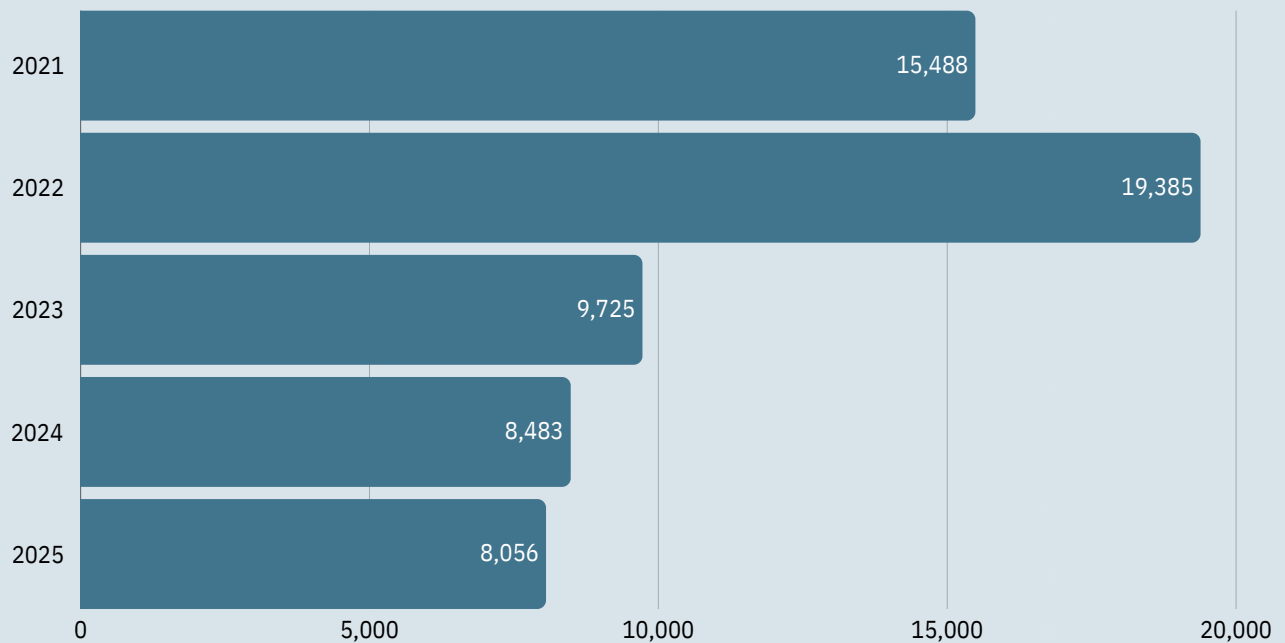
Disease Group	Disease	Total	Disease Group	Disease	Total
AIDS/HIV	AIDS, Aggregate Novel	0	STD	Chlamydia (Genital)	135
COVID19/MIS	Coronavirus COVID-19	938	STD	Gonorrhea	29
Foodborne	Campylobacter	35	STD	Syphilis - Early Latent	3
Foodborne	Cryptosporidiosis	5	STD	Syphilis - Primary	0
Foodborne	Giardiasis	5	STD	Syphilis - Secondary	1
Foodborne	Salmonellosis	15	STD	Syphilis - Unknown Duration or Late	1
Foodborne	Escherichia coli (STEC)	8	Tuberculosis	Latent Tuberculosis Infection	9
Foodborne	Yersinia enteritis	4	Tuberculosis	Nontuberculous Mycobacterium	5
Influenza	Influenza Like Disease*	2,148	Tuberculosis	Tuberculosis	1
Influenza	Influenza	711	VPD	Chickenpox (Varicella)	5
Meningitis	Meningitis - Aseptic	1	VPD	H. influenzae Disease - Inv.	2
Meningitis	Streptococcus pneumoniae, Inv	9	VPD	Mumps	1
Other	Candida auris	4	VPD	Pertussis	10
Other	Gastrointestinal Illness	3,741	VPD	Shingles	14
Other	Histoplasmosis	1	Vectorborne	Lyme Disease	28
Other	Legionellosis	2	Viral Hepatitis	Hepatitis A	0
Other	Streptococcal Dis, Inv, Grp A	7	Viral Hepatitis	Hepatitis B, Acute	0
Rabies	Rabies Animal	0	Viral Hepatitis	Hepatitis B, Chronic	5
			Viral Hepatitis	Hepatitis C, Acute	0
			Viral Hepatitis	Hepatitis C, Chronic	12

Communicable Disease Reporting

The chart below illustrates overall communicable disease reporting trends in Lenawee County over the past five years.

5-Year Snapshot

5-Year Communicable Disease Totals (2021-2025)



Communicable disease investigations have decreased since the COVID-19 surge in 2022, with overall communicable diseases investigated being 8,056 cases in 2025.

Public Health Services Impact Snapshot

The table below represents Public Health services provided through the Lenawee County Health Department clinic during Fiscal Year 2025. These services, including immunizations, STI testing and treatment, and communicable disease response, support the health and well-being of our community.

STI

132	Chlamydia
32	Gonorrhea
4	Syphilis
1	Other

Reproductive Health

405 Total Individuals Served

Breast and Cervical Cancer Control (BCCCNP)

14	Women Assessed for FP/BCCNP (Ages 18-40)
43	Women Assessed (Ages (40-60))

Immunizations

1,229	Individuals Seen in Clinic
1,056	Vaccines Administered (private)
1,026	Vaccines Administered VFC
132	Vaccines Administered AVP
419	Waiver Appointments

General Communicable Disease

2,533	Cases Investigated
230	Animal Bites (human)
3	Animal Bites (non-human)

Covid Communicable Disease

478	Confirmed
485	Probable
21	Suspect

Tuberculosis

2	Active Case Treatment
1	Skin Test Follow-up

Lead Outreach

68	Abnormal Tests Investigated
----	-----------------------------



Community Events & Outreach

36 outreach Events Attended

Throughout the year, the Lenawee County Health Department (LCHD) participated in 36 community outreach events across Lenawee County. During these events, our staff provided education, resources, and support to promote health and connect residents with essential public health services.

The LCHD participated in events such as the Lenawee County Fair, Project Connect, back-to-school events, local farmer markets, career fairs, Health Checks, Drug Take Back Day and many others. Attending these events allows LCHD to make a meaningful impact on the community.

Public Health Services

The programs below highlight key public health services provided to Lenawee County residents in 2025.



Hearing Screenings

4,683

Children Screened



Vision Screenings

6,956

Children Screened



Kindergarten Oral Health Assessment (KOHA)

567

Children Screened



Childhood Lead Poisoning and Prevention

68

Abnormal Tests Investigated



Children's Special Health Care Services

403

Total Client Enrollment

118

Plans of Care



Rabies Surveillance

230

Animal Bites Investigated

Environmental Health Services Impact

The table below represents the Environmental Health services provided to the community during Fiscal Year 2025. Through inspections, permitting, and regulatory oversight, our Environmental Health team works to ensure safe food, water, housing, and recreational environments that protect and promote public health.

Well & Septic

141	Septic Applications Submitted
96	Septic Permits Issued
253	Well Applications Submitted
201	Well Permits Issued
68	New Construction Permits

Campground Inspections

15	Seasonal Campgrounds Inspected
13,321	Seasonal Campsites Inspected

Public Swimming Pools

20	Public Swimming Pools Inspected
----	---------------------------------

Food Establishments Inspected

339	Food Service Licenses Issued
554	Food Service Inspections
183	Temporary Food Licenses Issued
19	Food Service Complaints Investigated

Department of Health and Human Services (DHHS) Facilities

23	DHHS Facilities Inspected
----	---------------------------



Radon Action Month

193 Short-term Radon Air Test Kits were distributed in January 2025 during Radon Action Month at no cost.



Environmental Health Services Impact

Public Beach Monitoring

The Lenawee County Health Department Environmental Health Staff collects water samples from two public beaches in Lenawee County throughout the summer swimming season. Weekly samples are collected from the public beaches of Hayes State Park and Lake Hudson Recreation Area. To preserve public health and prevent disease transmission, samples are tested for E. coli bacteria levels.



**A total of 103 samples were taken.
53 samples from Lake Hudson and 50
samples from Wampler's Lake.**

Vector-borne Disease Surveillance and Prevention

We participate in the Vector-Borne Disease Surveillance and Prevention Program in coordination with the Michigan Department of Health and Human Services (MDHHS). LCHD conducts mosquito and tick monitoring and submits data to help inform the public of risks related to emerging vector-borne diseases. We also partner with multiple entities throughout the county that provide trapping sites, making vector-borne disease monitoring possible.

Mosquito Surveillance

172 mosquitoes collected for testing.



Tick Surveillance

24 ticks collected for testing.



Materials Management

Recycling and Waste Hauling

In 2025, countywide recycling totaled approximately 10.2 thousand tons, an increase from 9.8 thousand tons in 2024. The county's waste diversion rate increased to 14.7%, compared to 13.96% the previous year, reflecting continued progress in recycling and waste reduction efforts.

The county recycling drop-off site collected more than 376 tons of recyclables in 2025, compared to 369 tons in 2024. In addition, waste haulers reported collecting 62,413 tons of garbage countywide in 2025, a decrease of approximately 30 tons from the previous year, despite the addition of two new reporting haulers.



Recycling Education Partnership & Community Events

Through a grant from EGLE, The Recycling Partnership provided over \$14,000 worth of free educational materials to Lenawee County. Mailers were distributed to residents in Raisin Township, Madison Charter Township, Cambridge Township, Village of Addison, City of Tecumseh, Tecumseh Township, City of Adrian, and Adrian Township.

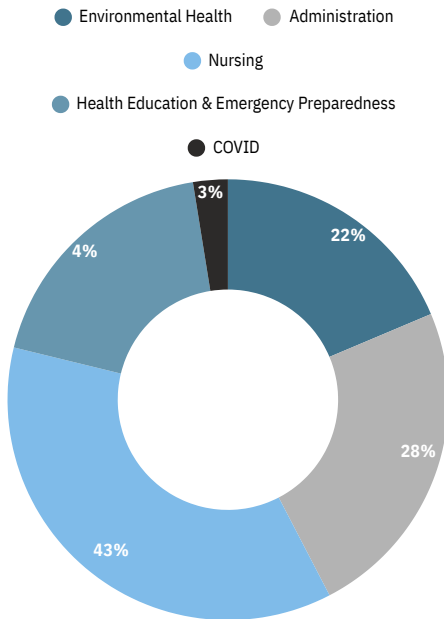
The Materials Management Program also participated in several community events, including the Household Hazardous Waste Collection, Spring Community Collection Day, and Tire Collection events, helping to promote safe disposal and recycling practices throughout the county.



Financial Report

The Finance Division ensures the responsible use of public funds and supports the department’s ability to deliver essential public health services. LCHD is funded through a combination of state and federal funding, county appropriations, grants, and service fees.

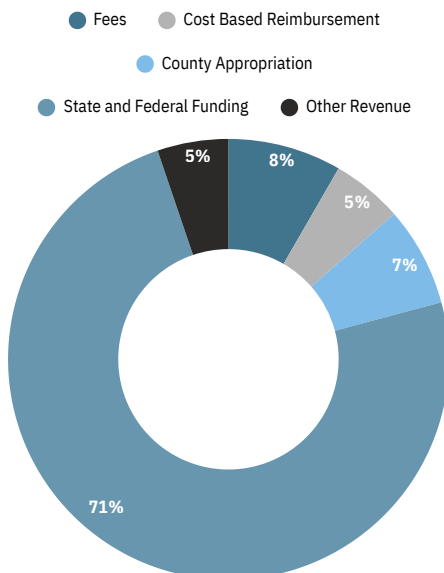
Expenditures



Expenditures

Environmental Health	\$ 794,703.95
Administration	\$ 1,007,361.53
Nursing	\$ 1,529,612.99
COVID	\$ 92,279.08
Health Education & Emergency Preparedness	\$ 148,246.47
Total Expenditures	\$ 3,572,204.00

Revenues

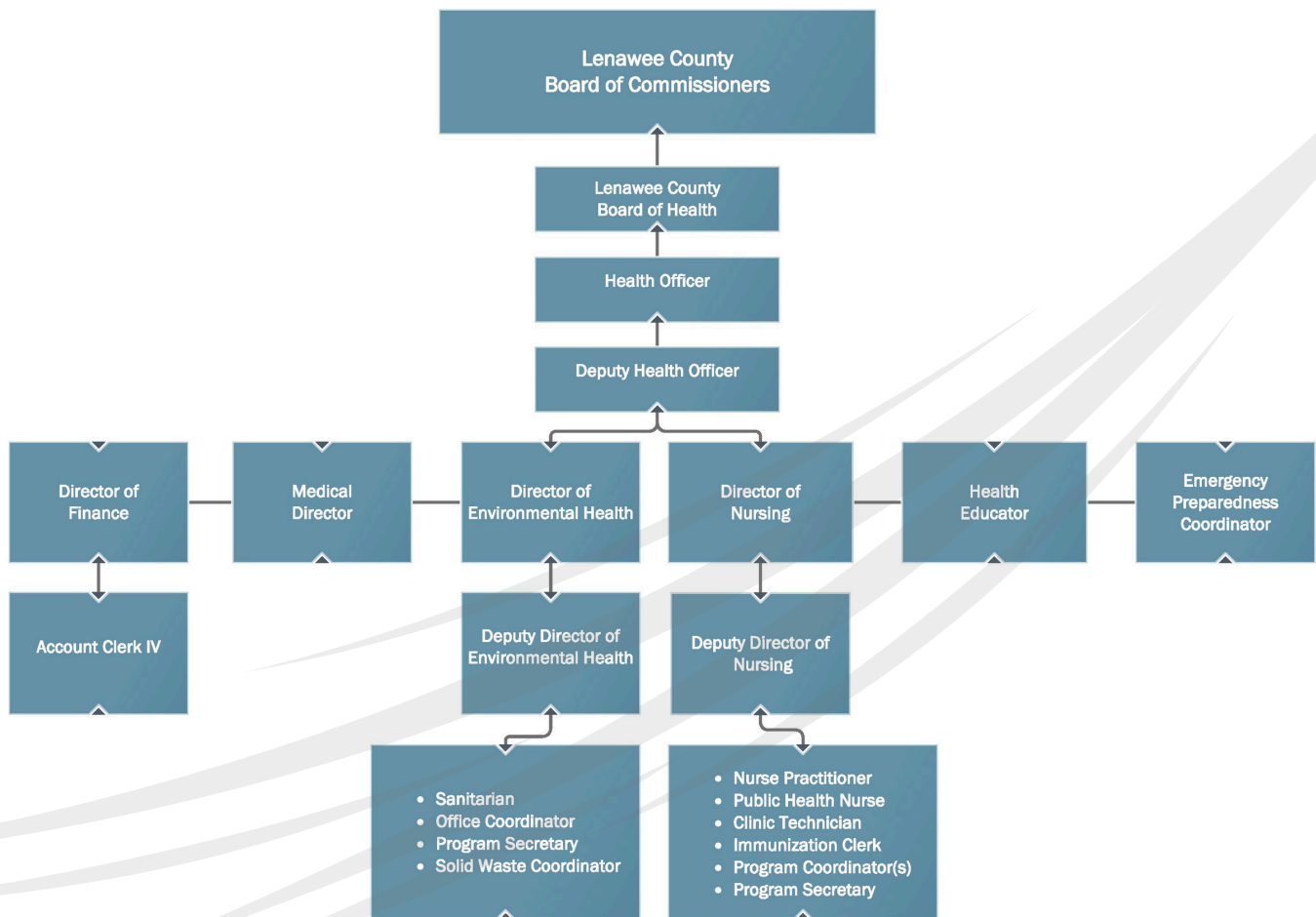


Revenues

Fees	\$ 368,605.00
3rd Party Reimbursements	\$ 152,594.00
Cost Based Reimbursements	\$ 220,053.00
State & Federal Funding	\$ 3,104,670.00
County Appropriation	\$ 300,000.00
Other Revenue	\$ 217,614.00
Total Revenues	\$ 4,363,536.00

Organizational Chart

The Lenawee County Health Department is structured to support effective leadership, collaboration, and service delivery. The following organizational chart outlines the department's reporting structure and key functional areas.



Looking Ahead

As we move into the next fiscal year, the Lenawee County Health Department remains committed to strengthening partnerships, expanding outreach efforts, and modernizing programs to better serve our community. Guided by our new five-year strategic plan, we will continue investing in workforce development, improving service delivery, and reducing barriers to care. We remain dedicated to protecting and promoting the health of all Lenawee County residents.

Stay Connected with the Health Department

Email

lenaweehd@lenawee.mi.us

Phone

517-264-5226

Address

1040 S Winter St, Suite 2328
Adrian, MI 49221

Website

lenawehealthdepartment.org

Follow us on Social Media



facebook.com/Lenawee
CountyHealthDepartment



instagram.com/lenawehealth



twitter.com/lenaweehd



LENAWEE COUNTY
HEALTH DEPARTMENT