

# LENAWEE COUNTY HEALTH DEPARTMENT



# ANNUAL REPORT

2022  
2023

An annual review of Lenawee County  
Health Department

# A MESSAGE FROM OUR HEALTH OFFICER



MONICA HUNT, MBA, CPH

## Executive Summary 2023

On behalf of the Lenawee County Board of Commissioners and the Lenawee County Board of Health, I am pleased to present the Fiscal Year 2023 Lenawee County Health Department (LCHD) Annual Report.

## Commitment to Excellence

In 2023, the LCHD focused on delivering excellence in our core programs to promote a safe and healthy environment for our residents. We continuously strive for improvement and innovation in our services to meet the evolving needs of the community. Our commitment extends beyond our immediate work, as we actively foster and sustain relationships with community members and stakeholders to amplify our impact.

## Strategic Partnerships and Initiatives

Despite the challenges faced in 2023, we successfully reignited our partnership with Washtenaw, Livingston, and Monroe Counties for the "It is Possible" recovery and harm reduction campaign. This regional initiative aims to instill hope that recovery from substance use disorder is achievable, while providing essential support and resources for harm reduction strategies to improve public health outcomes.

## Environmental Health Services Expansion

A significant enhancement to our Environmental Health services in 2023 was the introduction of our Beach Monitoring program for local state parks. This initiative ensures that bacteria levels in the water are monitored and maintained at safe levels, protecting the health and well-being of our residents and visitors.

## Looking Ahead

I am privileged to work alongside a remarkable team of public health professionals, community partners, and engaged residents dedicated to improving the health and safety of our community. Together, we achieved much in 2023, and I am excited about the opportunities and advancements we will pursue in 2024.

Thank you for your continued support and collaboration as we strive to make Lenawee County a healthier and safer place for everyone.

# BOARD OF HEALTH

The Board of Health was established in April 1946. The Board of Health identifies public health problems and concerns, establishes priorities, and advises the Board of Commissioners and the Health Department regarding community health matters and possible solutions. Board members assist the health department in informing the community and Commissioners of health department programs.



**John Tuckerman**

*Chair*

Since January 2003, John Tuckerman, a Blissfield resident, has served as a member of the Board of Health.



**Lorrie Tritt, DVM**

*Vice Chair*

Since February 2011, Lorrie Tritt, a Tecumseh resident, has been a member of the Board of Health



**LeAnn Minton**

*Member*



**Terry Collins**

*Commissioner*



**Aimrie Ream-Taylor**

*Member*

# OUR MISSION, VISION AND VALUES

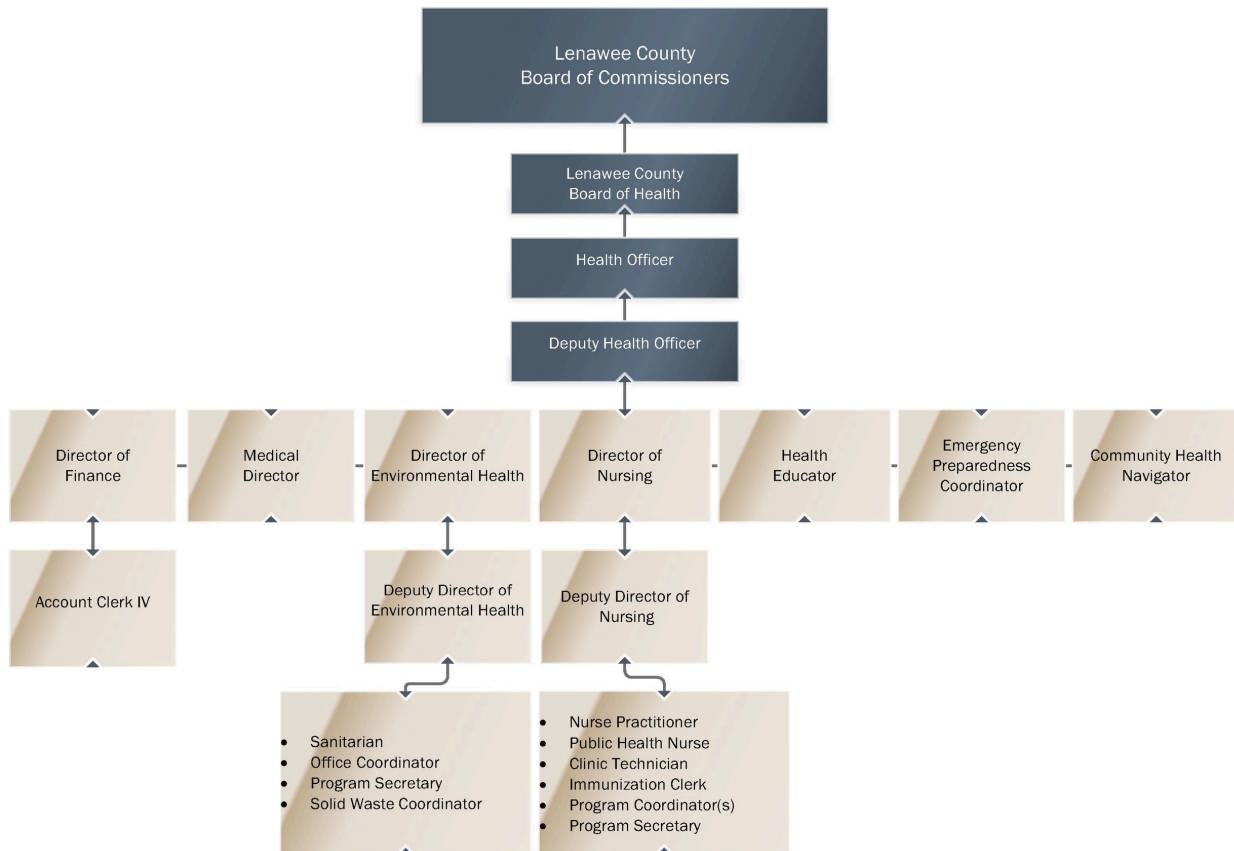
## MISSION:

*Promote a Safe and Healthy Environment*

## VISION:

*Lenawee County is a Safe and Healthy Community*

# ORGANIZATIONAL CHART



# ABOUT LENAWEE COUNTY



## 2023 STATISTICS

<b>Population</b>	97,250
<b>Median Household Income</b>	\$65,484
<b>Age Group</b>	Persons under 5 4.7% Persons under 18 years- 20.3% Persons 65 years and over 21%
<b>Deaths</b>	1,224
<b>Leading Cause of death</b>	Heart Disease 291 Cancer 225 Accidents 60 COVID-19 62

source: <https://www.census.gov/quickfacts>

## WHERE IT ALL BEGAN



With a \$28,000 starting budget, the Lenawee County Health Department was founded in April 1946. A number of initiatives, such as basic communicable disease control, a TB clinic, vision and hearing screenings for school-age children, tuberculin skin testing in schools, and the adoption of a sanitary code, were started in the early years to address the health requirements of our community.

# COMMUNICABLE DISEASE REPORTING

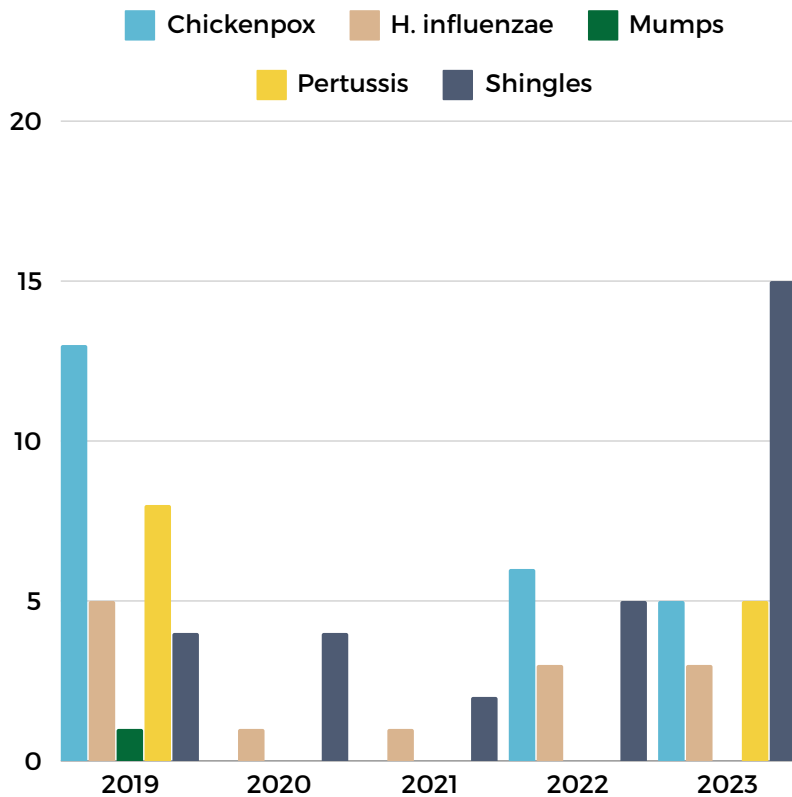
**6,000**  
COMMUNICABLE DISEASES  
INVESTIGATED IN FY 2022/2023

“Communicable Disease is caused by micro-organisms such as bacteria, viruses, parasites, and fungi that can be spread directly or indirectly from one person to another. Transmission can occur through insect bites, human to human contact and indigestion of contaminated food or water.”

-World Health Organization

Disease	2019	2020	2021	2022	2023	T total
AIDS, Aggregate	0	0	0	0	0	0
Multisystem Inflammatory Syndrome	0	1	2	1	1	5
Novel Coronavirus COVID-19	0	4683	14768	14699	4175	38325
Campylobacter	28	8	17	30	31	114
Giardiasis	7	1	4	4	6	22
Norovirus	2	12	3	2	2	21
Salmonellosis	20	19	9	10	18	76
Shiga toxin-producing Escherichia coli	3	3	4	8	4	22
Shigellosis	2	1	1	2	3	9
Typhoid Fever	0	0	0	0	0	0
Yersinia enteritis	1	3	1	4	6	15
Influenza	178	405	70	340	358	1351
Meningitis - Aseptic	5	2	1	2	1	11
Meningitis - Bacterial Other	3	0	1	1	3	8
Meningococcal Disease	0	0	0	0	0	0
Streptococcus pneumoniae, Inv	9	9	2	5	11	36
Coccidioidomycosis	0	1	0	0	0	1
Histoplasmosis	3	1	1	0	0	5
Legionellosis	5	3	3	1	2	14
Rabies Animal	0	0	0	0	1	1
Rabies: Potential Exposure & PEP	208	129	162	120	4	623
Chlamydia (Genital)	265	248	240	226	198	1177
Gonorrhea	83	112	75	96	63	429
Syphilis	0	1	0	1	1	3
Tuberculosis	0	0	0	0	0	0
Chickenpox (Varicella)	16	0	0	6	5	27
H. influenzae Disease - Inv.	4	1	1	3	3	12
Measles	0	0	0	0	0	0
Mumps	1	0	0	0	0	1
Pertussis	8	0	0	0	5	13
Lyme Disease	1	4	6	1	6	18
Hepatitis A	0	0	0	0	0	0
Hepatitis B, Acute	0	0	0	0	0	0
Hepatitis B, Chronic	5	9	4	6	8	32
Hepatitis C, Acute	1	2	1	0	1	5
Hepatitis C, Chronic	47	47	28	25	22	169

# VACCINE PREVENTABLE COMMUNICABLE DISEASE REPORTING

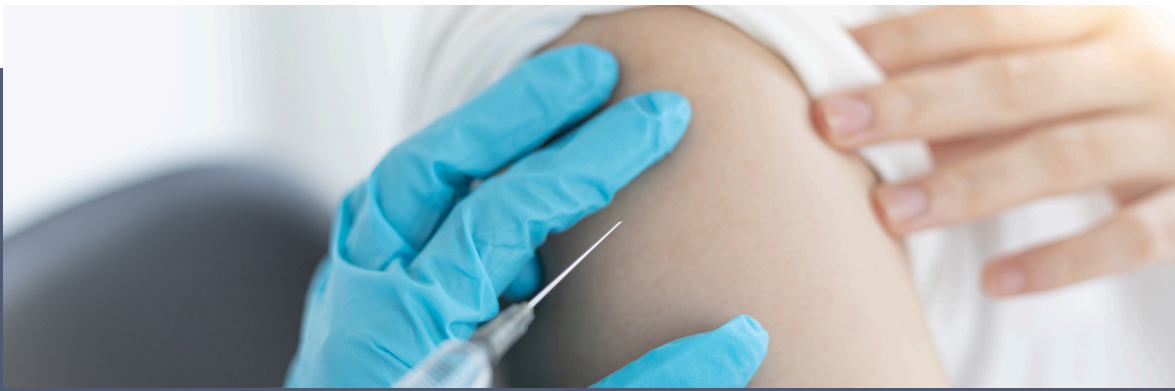


**9,710**  
IMMUNIZATIONS  
ADMINISTERED

**333**  
VACCINE WAIVER  
APPOINTMENTS

**Prevent the spread of disease by:**

- Properly wash your hands often
- Keep up on your vaccinations
- Avoid sharing personal items
- Handle and prepare food safely
- Stay home when you feel sick
- Clean and disinfect commonly used surfaces



# RABIES SURVIELANCE

Animal bite incidents can encompass a variety of situations, from physical bites and scratches to potential exposure to rabid animals, such as a bat found in a sleeping area. Nurses in our Communicable Disease Program investigate these incidents, provide information and manage cases.

## Rabies from an animal

In July 2023, the LCHD was notified that a bat found in Lenawee County had tested positive for rabies. The bat, found in Clinton, MI, is the first rabies-positive bat identified in Lenawee County this year.

Rabies is a deadly yet preventable disease that can spread to people and pets through bites or scratches from an infected, or rabid, animal. In Michigan and the United States, bats are the most common source of rabies exposure to humans.

A press release was immediately issued to inform and educate the public about the potential risks associated with bats and the importance of taking appropriate precautions.

**218**  
**ANIMAL BITES**  
**INVESTIGATED**



# CHILDRENS SPECIAL HEALTH CARE SERVICES

Children's Special Health Care Services (CSHCS) is a program that helps children with certain health conditions have better health and quality of life. In fall 2023, the CSHCS program expanded eligibility from 21 years old up to age 26! The program also expanded in 2022 to include lifetime sickle cell disease coverage.

390

CSHCS  
Clients

## Children's Special Health Care Services Clients

There were 390 Children's Special Health Care services clients. There are more than 2,700 medical conditions that may qualify children for coverage including diabetes, epilepsy, cerebral palsy, hearing loss, cystic fibrosis and blood disorders. Families of every income can join this program.

138

CSHCS Plans of Care

## Children's Special Health Services Plans of Care

138 Children's Special Health Services Plans of Care were executed. This service helps pay for medical bills including surgeries, medications, medical equipment and hospitalizations.



# COMMUNITY HEALTH NAVIGATORS

Community Health Navigators



## Outreach events attended

The Community Health Navigator's attended over 48 outreach events within the community in 2023. LCHD provides resources and education to the community at each outreach event that is attended throughout the year.



## Social Determinants of Health Survey

The Community Health Navigators were able to assist 126 clients receiving assistance. The Social Determinants of Health Survey (SDOH), launched by the All of Us Research Program, collects information from participants about various social and environmental factors affecting their everyday life. These factors include neighborhood safety, food and housing security, and experiences with discrimination and stress.



## Healthy Lenawee Community Cookbook

In 2023, the Community Health Navigator's collected over **300** recipes throughout the year. The recipes collected were turned into a Healthy Community Cookbook and distributed to members of the community at no cost.



LENAWEE COUNTY  
HEALTH DEPARTMENT

# PROTECT YOURSELF CAMPAIGN

**Total Distributed**  
39,720 An impressive total of 39,720 condoms were distributed throughout the 2022-2023 period, promoting safe practices and sexual health within our community.

**Bags Distributed**  
3,310 LCHD distributed 3,310 bags, each containing 12 condoms, lubrication, and essential consent and educational information.

**Community Partners**  
10 LCHD sustained distribution operations across 10 active sites.  
Active Organizations: Adrian Urgent Care, Anna's Adult Novelties, Community Action Agency, Daily Bread of Lenawee, DOCHA'S II, Mancino's Pizza, Parkside Family Counseling, Catherine Cobb Shelter, Share The Warmth, Hilltop Counseling/The M Society



**IN 2018...  
THE HEALTH  
DEPARTMENT  
BEGAN THE FREE  
CONDOMS  
PROGRAM**

# CHILDHOOD LEAD POISONING PREVENTION



85

## Abnormal Test Investigated

A total of 85 abnormal tests were investigated. The LCHD lead program focuses on community education by providing evaluations for possible exposure and preventing exposure.

# HEARING AND VISION PROGRAM

Hearing and vision screening is required by the Michigan Public Health code. All children starting kindergarten or preschool must have their hearing and vision tested before starting school. The Lenawee County Health Department partners with all the schools across Lenawee County to conduct hearing and vision screenings for students. The hearing and vision coordinator will refer any students identified during either screening for further testing.



4,529

Hearing Screenings

6,240

Vision Screenings

# PUBLIC HEALTH IMPACT

**451**  
**REPRODUCTIVE HEALTH**  
**CLIENTS SERVED**

## Reproductive Health Services

The LCHD served 451 reproductive health clients. This service includes health information, preventative services, infection treatment, and contraceptive options.

**45**  
**BCCCNP CLIENTS SERVED**

## Breast and Cervical Cancer Control Navigation Program (BCCCNP)

A total of 45 clients were served by this program. The BCCCNP program helps woman the ages of 40-64 with education, breast and pelvic exams, mammogram, pap test, or any further testing if results are abnormal.

**29**  
**WISEWOMAN**  
**PROGRAM PARTICIPANTS**

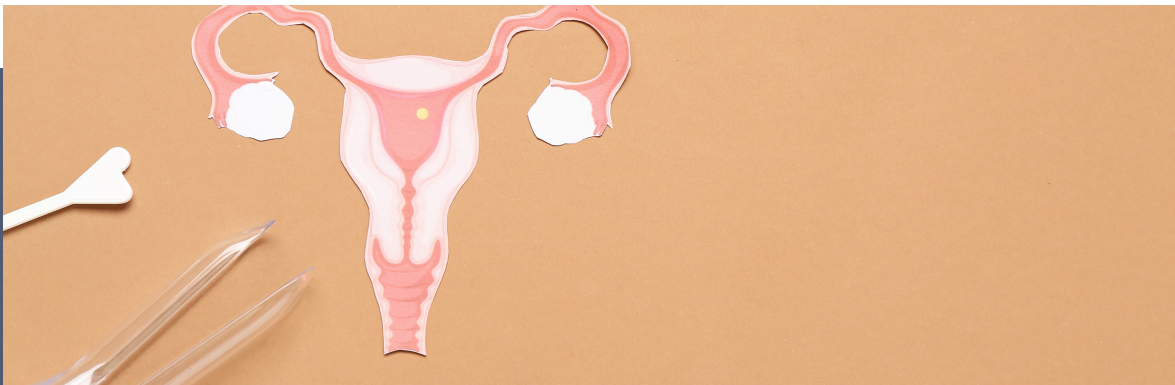
## WISEWOMAN Program

29 clients were served by the WISEWOMAN (Well Intergrated Services & Evaluation) program. This program helps prevent the risk of heart disease by offering free diabetes and cholesterol tests.

**278**  
**STI CLIENTS SEEN IN**  
**CLINIC**

## STI Testing & Counseling

A total of 278 STI (sexually transmitted infection) clients were seen in our clinics. STI screening, testing, treatments, and counseling were conducted.



# ENVIRONMENTAL HEALTH IMPACT

**41**  
Freedom of  
Information Act  
(FOIA) requests  
processed

**187**  
Free radon kits  
distributed

**311**  
well and septic  
applications

**1** water  
complaint

**13,321**  
seasonal campsites

**287**  
well and septic  
permits

**22**  
sewage  
complaints

**645**  
well and septic  
inspections

**24**  
pool inspections



# FOOD SERVICE INSPECTIONS

The Center for Disease Control and Prevention (CDC) estimates that each year roughly 1 out of 6 Americans (or 48 million people) get sick; 128,000 are hospitalized; and 300 die of foodborne diseases. These illnesses and deaths cost Americans billions of dollars each year due to medical expenses and loss of productivity.

The Environmental Health Department employs certified sanitarians to conduct food service inspections throughout Lenawee County to ensure food safety. These inspections are performed on both fixed and temporary food establishments.

## STATS AT A GLANCE

**1,381**  
Food Handler  
Class  
Participants

**601**  
Food Inspections

**212**  
Temporary Food  
Licences

**43**  
Food Complaint  
Investigations

source:

<https://www.cdc.gov/foodborneburden/index.html>



# VECTOR SURVEILLANCE

## VECTOR-BORNE DISEASE SURVEILLANCE AND PREVENTION

We participate in the Vector-Borne Disease Surveillance and Prevention Program in coordination with the Michigan Department of Health and Human Services (MDHHS). LCHD provides mosquito and tick monitoring data to MDHHS as well as uses surveillance data to notify the public of risks related to emerging vector-borne diseases.



The LCHD surveillance program is geared toward identifying populations of potentially invasive *Aedes* species mosquitoes capable of transmitting the Zika virus and identifying populations of *Ixodes scapularis*, the black-legged tick (deer tick) capable of transmitting Lyme disease, or other diseases.

## PUBLIC BEACH MONITORING

Beginning in 2023, the Lenawee County Health Department Environmental Health Staff began collecting water samples from two public beaches in Lenawee County throughout the summer swimming season. Weekly samples are collected from the public beaches of Hayes State Park and Lake Hudson Recreation Area. To preserve public health and prevent disease transmission, samples are tested for *E. coli* bacteria levels.



63

### Water Samples Taken

A total of 32 samples were taken at Lake Hudson and 31 samples were taken at Hayes State Park.



### No Advisories Posted

The Health Department did not issue any beach advisories in 2023.

# EMERGENCY PREPAREDNESS

Emergency preparation involves planning and responding to unexpected events. According to the World Health Organization (WHO), a disaster is described as an unforeseen incident that exceeds a hospital's capacity or requires external aid due to its location. Annually, the LCHD Emergency Preparedness team dedicates significant effort to ensure readiness for emergencies, emphasizing Emergency Preparedness as a critical public health service area.

## 2022 HIGHLIGHTS

### Ice Storm of 2023:

Thousands of Lenawee County residents were impacted by an ice storm leaving many residents without power. There were **30,889** electric utility customers, or **63.17%**, without power out of 48,897 customers tracked by the website [poweroutage.us](http://poweroutage.us).

In response to the power outages the Health Department set up warming shelters, assisted the county emergency manager with setting up an overnight shelter, and promoted the information on our website and social media pages. A total of **18** warming shelters opened their doors to assist the community during the outages.

In the after-action report the Emergency Preparedness Coordinator learned that there are **1,179** Medicare electricity dependent individuals living in Lenawee County. Households that are electricity dependent for medical devices, such as oxygen tanks, are particularly vulnerable during power outages; most do not have specific disaster plans and the Health Department will continue to work on a disaster plan and education for this population.



### PPE for Partners:

The Emergency Preparedness Coordinator distributed the surplus of supplies from the COVID-19 pandemic. The supplies primarily included bleach wipes and disposable gowns and the supplies were distributed to nine different community partners.

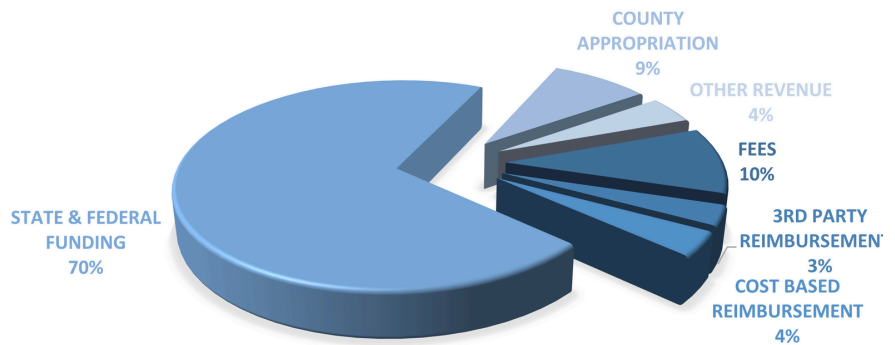


# FINANCE

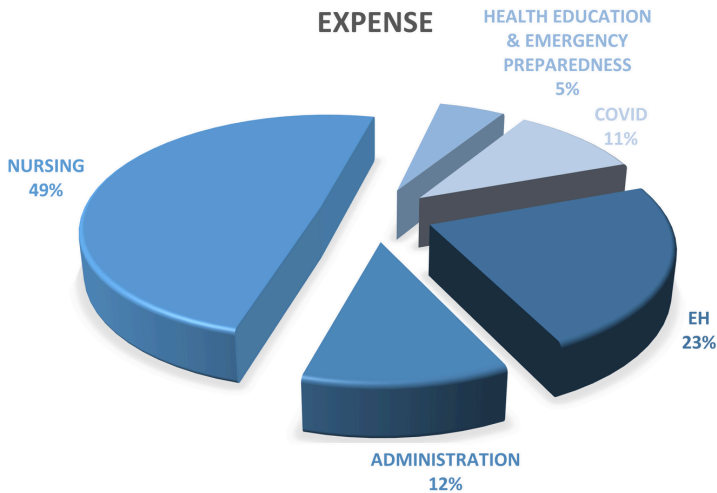
The Finance Division is responsible for maintaining a fiscally responsible local public health department.

By handling agency funds responsibly and frugally, they help to maximize LCHDS's community impact.

## REVENUE



## EXPENSE



LCHD is funded by state and federal funds, county funds, and grants.

For the 2022-2023 fiscal year, a total of **40** different funding sources were utilized.



Annual Report 2022/2023

# COMMUNICATIONS

The Lenawee County Health Department uses many different resources to send out public health information to the public. A few of those resources include our website, social media pages, press releases, and Lenawee Alerts.

In addition to these digital tools, we also engage with the community through educational workshops, health fairs, and local partnerships. Our goal is to provide timely, accurate, and accessible information to ensure the well-being of all residents.

We encourage everyone to stay informed by regularly checking our updates and participating in community health initiatives. Whether it's flu season advisories, nutrition tips, or emergency preparedness guidelines, our team is dedicated to keeping you and your family healthy and safe.



## Social Media Followers

Our social media pages have gained **614** new followers, bringing our total following to **7,482**.



## Website Visits

The Health Department webpage received **13,843** views.



[facebook.com/LenaweeCountyHealthDepartment/](https://facebook.com/LenaweeCountyHealthDepartment/)



[twitter.com/lenaweehd](https://twitter.com/lenaweehd)



[instagram.com/lenawehealth](https://instagram.com/lenawehealth)

# MORE INFORMATION ABOUT US!



## LENAWEE COUNTY HEALTH DEPARTMENT

**EMAIL :**

[lenaweehd@lenawee.mi.us](mailto:lenaweehd@lenawee.mi.us)

**PHONE :**

517-264-5226

**ADDRESS :**

1040 S. Winter St, Suite 2328  
Adrian, MI 49221

**WEBSITE :**

[www.lenawehealthdepartment.org](http://www.lenawehealthdepartment.org)

**THANK YOU!**