

2024

ANNUAL REPORT



LENAWEE COUNTY
HEALTH DEPARTMENT

Executive Summary 2024

On behalf of the Lenawee County Board of Commissioners and the Lenawee County Board of Health, I am pleased to present the Fiscal Year 2024 Lenawee County Health Department (LCHD) Annual Report.

Commitment to Excellence

In 2024, LCHD remained dedicated to delivering high-quality programs that promote a safe and healthy environment for our residents. We continuously seek improvement and innovation in our services to meet the evolving needs of the community. Beyond our core work, we actively collaborate with community members and stakeholders to expand our impact.

Strategic Partnerships and Initiatives

- **Healthy Lenawee Community Cookbook:** LCHD launched the Healthy Lenawee Community Cookbook, a collection of nutritious recipes contributed by Lenawee County residents. Published in late 2023, the cookbook was distributed both digitally and in print to encourage healthy eating habits throughout the community. Recipes were gathered through workshops, online submissions, and community events, resulting in a diverse collection of locally inspired, wholesome meals.
- **K-12 Infection Prevention:** LCHD partnered with local school districts across Lenawee County to launch the Infection Prevention Initiative, providing essential education and resources to help reduce disease transmission in schools. Through this program, 36 schools received infection prevention supplies, including Kleenex, Lysol wipes, thermometers, and hand sanitizer, totaling over \$147,000 in support. By equipping schools with these critical resources and promoting best practices in hygiene, creating a healthier learning environment for students, teachers, and staff.
- **Narcan Vending Machine:** In March, we partnered with the Lenawee Community Mental Health Authority to install a Narcan vending machine at our department, increasing access to this life-saving medication and helping combat the opioid epidemic.
- **World No Tobacco Day Awareness Project:** In collaboration with the Lenawee Youth Council, we participated in the Clothesline Project in recognition of the World Health Organization's World No Tobacco Day. A powerful display of 147 shirts, each representing a tobacco-related death in Lenawee County last year, was placed at the Human Services Building to raise awareness and inspire action against tobacco use.
- **Pop-Up Clinics:** In late May, our clinic team launched a series of pop-up clinics focused on reproductive health and sexually transmitted infections. Partnering with local shelters, libraries, and community centers, providing confidential services to those in need.
- **Rural Health and Minority Outreach Initiative:** Through this partnership, we joined forces with ProMedica Farms, the Lenawee Public Transportation Authority, and Adrian Medical Pharmacy to reduce barriers for individuals identified through social determinants of health screenings. This initiative has successfully expanded access to fresh produce, medical transportation, and healthcare resources.

Clinical & Environmental Health Services Expansion

- **Kindergarten Oral Health Program:** In response to new dental requirements, we partnered with Dentists R Us to provide oral health assessments alongside our Hearing and Vision Screenings. This program ensures that young children receive early dental evaluations, helping identify potential oral health issues before they become serious. By integrating dental assessments into existing school-based screenings, we are improving access to preventive care and promoting lifelong oral health.
- **Materials Management Expansion:** Our Environmental Health division now oversees the county's Solid Waste Management Plan and is working to implement the new Materials Management Plan. This includes licensing local waste haulers, collecting waste and recycling data, and providing a designated recycling drop-off location for residents.

Looking Ahead

I am honored to work alongside a dedicated team of public health professionals, community partners, and engaged residents committed to improving the health and well-being of Lenawee County. Together, we achieved significant progress in 2024, and I look forward to building on this momentum in 2025.

Thank you for your continued support and collaboration in making Lenawee County a healthier and safer place for all.



Monica Hunt, MBA, CPH
Health Officer

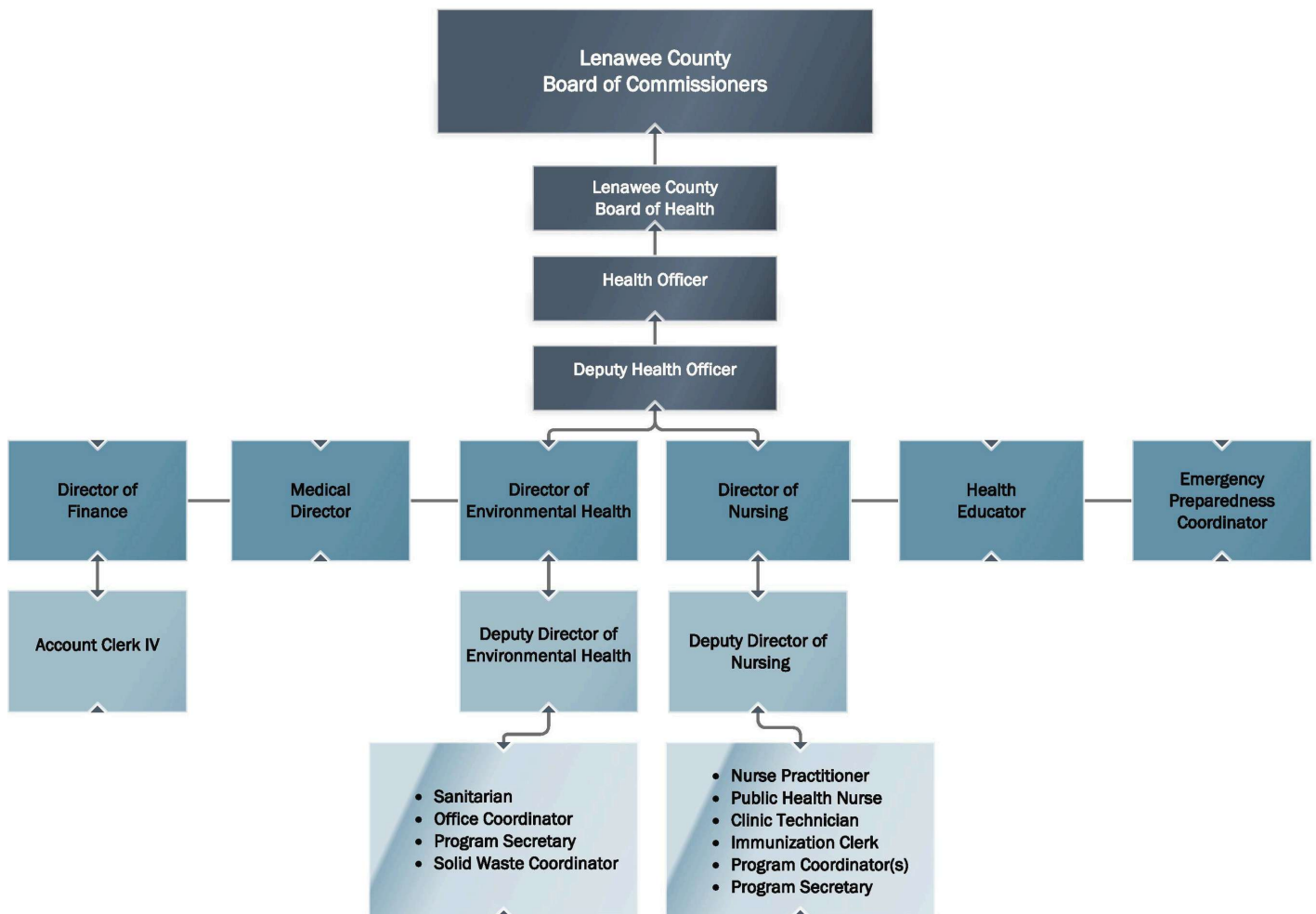
OUR VISION

Lenawee County is a Safe and Healthy Community

OUR MISSION

Promote a Safe and Healthy Environment

ORGANIZATIONAL CHART



PUBLIC HEALTH IN ACTION



Harm Reduction Initiative

In March 2024, a free naloxone vending machine was installed in our clinic waiting area located in the Human Services Building. Naloxone (also known as Narcan) is a safe medication designed to reverse an opioid overdose. Making naloxone easily accessible allows more people to obtain and use this lifesaving medication.

**FREE NALOXONE
VENDING MACHINE
INSTALLED**

Protect Yourself Campaign

The following locations have partnered with us to distribute free condoms in Lenawee:

- Lenawee County Health Department
- Adrian Counseling and Psychiatric Clinic
- Adrian Urgent Care
- Anna's Adult Novelties
- Catherine Cobb Shelter
- Community Action Agency
- Hilltop Counseling/ The M Society
- Mancino's
- Parkside Family Counseling
- Share the Warmth

The LCHD thanks you for your partnership!



**39,672 CONDOMS
WERE DISTRIBUTED**

PUBLIC HEALTH IN ACTION

Pop-Up Clinics

In 2024, the LCHD began to offer FREE or low-cost reproductive health and STI pop-up clinics. These clinics connect with community members in their own locations and raise awareness about the services we provide.

Services Offered:

- Testing for Chlamydia, Gonorrhea and Trichomoniasis
- Birth Control (Pills, Depo shot, Plan B, Condoms, Education, Resources)



Promoting Safer Marijuana Use

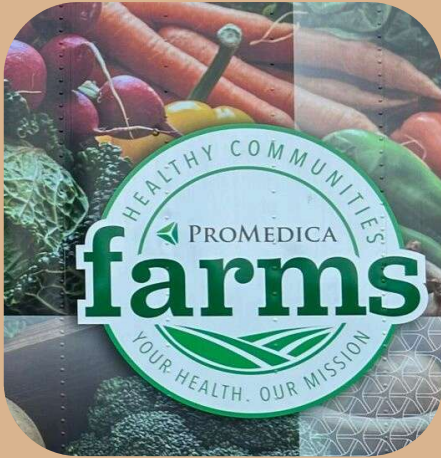


Our medical marijuana grants help raise awareness of safe storage and safer use of marijuana. LCHD distributes free lock bags throughout the community at various outreach events and marijuana dispensaries. Safe storage of marijuana is essential. Locking up marijuana keeps it safely out of the wrong hands, helping to prevent accidental poisoning of children and pets.

**2,500 LOCK BAGS
DISTRIBUTED
THROUGHOUT THE
COMMUNITY**

PUBLIC HEALTH IN ACTION

Rural Health and Minority Outreach Initiative



In collaboration with ProMedica Farms and Lenawee Public Transportation Authority, we provided clients with vouchers for fresh produce and tokens for transportation. These resources are available to any client who visits our clinic and completes the Social Determinants of Health Survey.

In addition, LCHD and Adrian Pharmacy collaborated to provide gift certificates to individuals who demonstrate a need for assistance with syringes, medical supplies, or medications. Those who provided the coupon also received free products from Adrian Pharmacy, like vitamins, Motrin, or Tylenol.

600

\$5 VEGGIE MOBILE CERTIFICATES PURCHASED

400

\$10 ADRIAN MEDICAL CERTIFICATES PURCHASED

1,000

TRANSPORTATION TOKENS PURCHASED

Infection Prevention Initiative

LCHD partnered with schools across the county and provided items such as Kleenex, Lysol wipes, thermometers, and hand sanitizer. This initiative aims to lower the risk of disease transmission by providing school districts throughout Lenawee County with education and infection prevention resources. The objective of this initiative is to keep school staff and students healthy throughout the cold and flu season. The Infection Prevention Initiative provided our local public schools with a total of \$147,000 in supplies.



5,322

LYSOL WIPE CANISTERS DISTRIBUTED

2,125

THERMOMETERS DISTRIBUTED

1,884

BOTTLES OF HAND SANITIZER DISTRIBUTED

12,348

BOXES OF TISSUES DISTRIBUTED

PUBLIC HEALTH IN ACTION

The Clothesline Project

In recognition of the World Health Organization's (WHO) World No Tobacco Day, May 31st, the Lenawee County Health Department, in collaboration with the Lenawee YOUTH Council, set up their annual clothesline project at the Human Services Building on Winter Street. The teens from the Youth Council hung each of the 147 shirts on the clothesline, representing each tobacco-related death in Lenawee County last year. The clothesline was on display for approximately two weeks.



Tobacco use kills more than 6 million people worldwide every year. Smoking is the leading cause of preventable death in Lenawee County and kills more people in our county than AIDS, alcohol, auto accidents, drugs, opioids, murders, and suicides combined.

Healthy Lenawee Community Cookbook



The LCHD developed the Healthy Lenawee Cookbook to offer local community members nutritious recipes for their families. After engaging with the community and inviting them to share their healthy recipes, two editions of the Healthy Lenawee Cookbook were published. In 2024, the collected recipes were transformed into two Healthy Community Cookbooks, which were distributed free of charge to community members. The winter edition was released in January 2024, followed by the summer edition in May. Furthermore, the cookbooks were also provided to local food banks, libraries, and outreach events.

COMMUNICABLE DISEASE REPORTING

5-Year Disease Reporting

| Disease | 2020 | 2021 | 2022 | 2023 | 2024 |
|-------------------------------------|------|------|------|------|------|
| Rabies Animal | 0 | 0 | 0 | 1 | 0 |
| Rabies: Potential Exposure & PEP | 129 | 162 | 120 | 4 | 4 |
| Chlamydia (Genital) | 247 | 240 | 226 | 198 | 140 |
| Gonorrhea | 113 | 75 | 96 | 63 | 48 |
| Syphilis - Early Latent | 2 | 1 | 4 | 7 | 0 |
| Syphilis - Primary | 1 | 0 | 1 | 1 | 1 |
| Syphilis - Secondary | 0 | 2 | 2 | 3 | 1 |
| Syphilis - Unknown Duration or Late | 3 | 6 | 2 | 5 | 3 |
| Latent Tuberculosis Infection | 1 | 2 | 4 | 7 | 7 |
| Nontuberculous Mycobacterium | 3 | 5 | 2 | 2 | 3 |
| Tuberculosis | 0 | 0 | 0 | 0 | 0 |
| Chickenpox (Varicella) | 0 | 0 | 6 | 5 | 1 |
| H. influenzae Disease - Inv. | 1 | 1 | 3 | 3 | 1 |
| Measles | 0 | 0 | 0 | 0 | 0 |
| Mumps | 0 | 0 | 0 | 0 | 1 |
| Pertussis | 0 | 0 | 0 | 5 | 30 |
| Shingles | 4 | 2 | 5 | 15 | 13 |
| Lyme Disease | 4 | 6 | 1 | 6 | 16 |
| Hepatitis A | 0 | 0 | 0 | 0 | 1 |
| Hepatitis B, Acute | 0 | 0 | 0 | 0 | 1 |
| Hepatitis B, Chronic | 9 | 4 | 6 | 8 | 13 |
| Hepatitis C, Acute | 2 | 1 | 0 | 1 | 1 |
| Hepatitis C, Chronic | 47 | 29 | 25 | 21 | 18 |

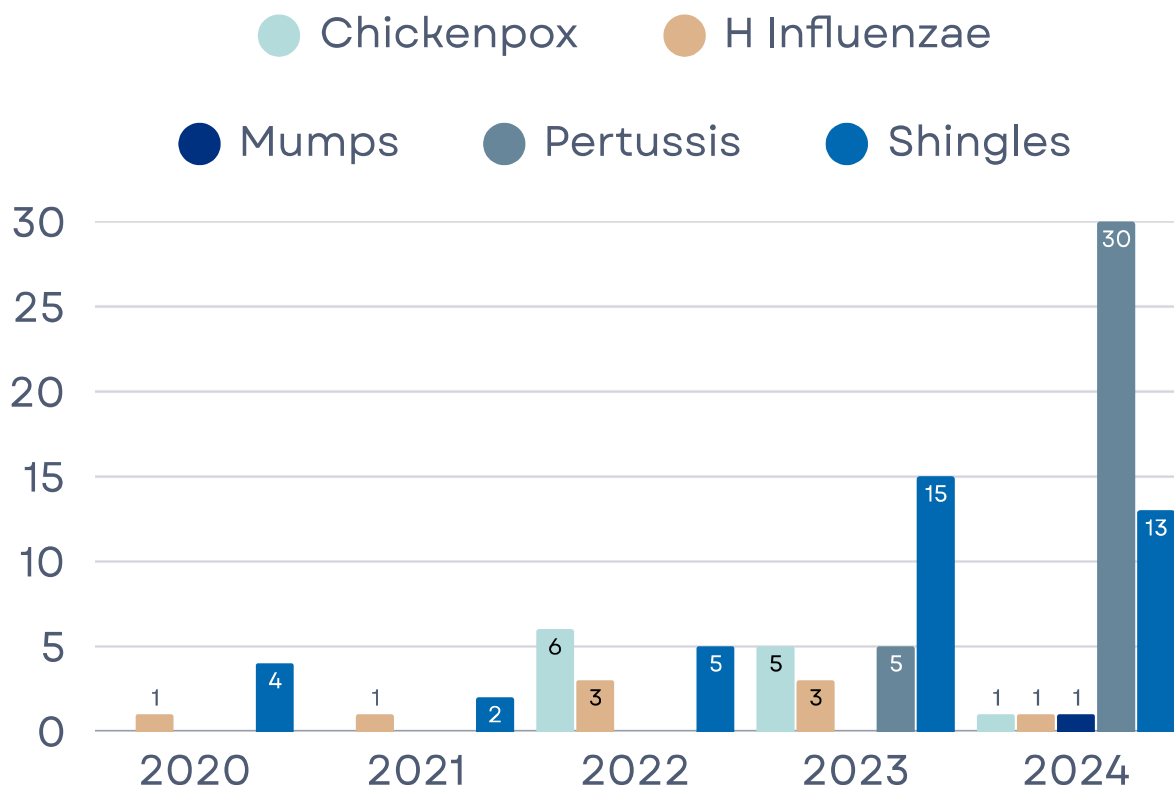
“Preventing and controlling the spread of disease is at the heart of much public health work. From the coronavirus to influenza, Lyme disease, malaria and Ebola, outbreaks of infectious diseases can have an extraordinary impact on human health.”

- American Public Health Association

5-Year Disease Reporting

| Disease | 2020 | 2021 | 2022 | 2023 | 2024 |
|---|------|-------|-------|------|------|
| AIDS, Aggregate | 0 | 0 | 0 | 0 | 0 |
| Multisystem Inflammatory Syndrome | 1 | 2 | 1 | 1 | 0 |
| Novel Coronavirus COVID-19 | 4679 | 14764 | 14687 | 4175 | 2130 |
| Campylobacter | 8 | 17 | 30 | 31 | 30 |
| Giardiasis | 1 | 4 | 4 | 6 | 11 |
| Norovirus | 12 | 3 | 2 | 2 | 23 |
| Salmonellosis | 19 | 9 | 10 | 18 | 19 |
| Shiga toxin-producing Escherichia coli --(STEC) | 3 | 4 | 8 | 4 | 3 |
| Shigellosis | 1 | 1 | 2 | 3 | 0 |
| Yersinia enterocolitica | 3 | 1 | 4 | 6 | 12 |
| Influenza | 408 | 69 | 340 | 358 | 454 |
| Meningitis - Aseptic | 2 | 1 | 2 | 1 | 4 |
| Meningitis - Bacterial Other | 0 | 1 | 1 | 3 | 0 |
| Meningococcal Disease | 0 | 0 | 0 | 0 | 1 |
| Streptococcus pneumoniae, Inv | 9 | 2 | 5 | 11 | 13 |
| Gastrointestinal Illness | | | | | |
| Histoplasmosis | 1 | 1 | 0 | 0 | 1 |
| Kawasaki | 1 | 1 | 1 | 0 | 0 |
| Legionellosis | 3 | 3 | 1 | 2 | 1 |
| Streptococcal Dis, Inv, Grp A | 2 | 1 | 1 | 9 | 7 |
| Streptococcus pneumoniae, Drug Resistant | 1 | 2 | 2 | 0 | 0 |

VACCINE PREVENTABLE COMMUNICABLE DISEASE REPORTING



“Immunization currently prevents 3.5 million to 5 million deaths every year from diseases like diphtheria, tetanus, pertussis, influenza and measles.”
- World Health Organization

THE LCHD ADMINISTERED 2,221 VACCINES AND CONDUCTED 298 VACCINE WAIVER APPOINTMENTS

PUBLIC HEALTH SERVICES IMPACT

HEARING AND VISION PROGRAM



Hearing and vision screenings are mandated by the Michigan Public Health Code. Preschool children (ages 3-5) and all children entering kindergarten must have their hearing and vision tested before starting school. School-age children in grades K, 2, and 4 are required to have hearing screenings, while students in grades 1, 3, 5, 7, and 9 must have vision screenings. The Lenawee County Health Department collaborates with schools throughout the county to provide these screenings for students. The hearing and vision coordinator will refer any students identified during the screenings for additional testing.

4,454 HEARING SCREENS WERE CONDUCTED
6,643 VISION SCREENS WERE CONDUCTED

KINDERGARTEN ORAL HEALTH ASSESSMENT

In 2024, the LCHD launched the Kindergarten Oral Health Program. Michigan passed a law to ensure that kids enrolling in their first year of school have an oral health assessment before starting school. Michigan's new Kindergarten Oral Health Assessment (KOHA) is important since poor oral health can affect a child's attendance, grades, and overall performance in school. MI KOHA helps ensure each student is healthy and ready for a successful school year!



505 ORAL HEALTH SCREENINGS CONDUCTED

PUBLIC HEALTH SERVICES IMPACT

CHILDREN'S SPECIAL HEALTH CARE SERVICES

There were 408 Children's Special Health Care (CSHC) service clients enrolled and 158 Plans of Care in 2024. There are more than 2,700 medical conditions that may qualify children for coverage, including diabetes, epilepsy, cerebral palsy, hearing loss, cystic fibrosis, and blood disorders. Families of every income level can join this program. Recently, eligibility for all CSHCS covered conditions was expanded to age 26.

Partnering with the family to create a Plan of Care with goals for the family and LCHD staff to ensure the highest attainment of health for the client. Families are connected to community-based services, referred to medical providers, and assisted in accessing services.



CHILDHOOD LEAD POISONING PREVENTION



The LCHD lead program focuses on community education by providing evaluations for possible exposure and preventing exposure. Our Staff works closely with the Michigan Department of Health and Human Services (MDHHS) Lead Safe Home Program to provide home assessment and lead abatement services.

120 ABNORMAL LEAD TESTS WERE INVESTIGATED

PUBLIC HEALTH IMPACT

Reproductive Health Services

The LCHD served 442 reproductive health clients. This service includes health information, preventative services, infection treatment, and contraceptive options.

442

**REPRODUCTIVE HEALTH
CLIENTS SERVED**

Breast and Cervical Cancer Control Navigation Program (BCCCNP)

A total of 45 clients were served by this program. The BCCCNP program helps woman the ages of 40-64 with education, breast and pelvic exams, mammogram, pap test, or any further testing if results are abnormal.

45

**BCCCNP CLIENTS
SERVED**

WISEWOMAN Program

41 clients were served by the WISEWOMAN (Well Intergrated Services & Evaluation) program. This program helps prevent the risk of heart disease by offering free diabetes and cholesterol tests.

41

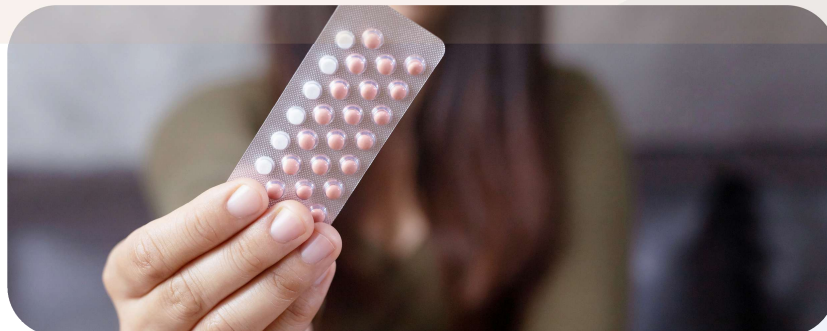
**WISEWOMAN
PROGRAM PARTICIPANTS**

STI Testing & Counseling

A total of 279 STI (sexually transmitted infection) clients were seen in our clinics. STI screening, testing, treatments, and counseling were conducted.

279

**STI CLIENTS
SEEN IN CLINIC**



RABIES SURVIELANCE



Animal bite incidents can encompass a variety of situations, from physical bites and scratches to potential exposure to rabid animals, such as a bat found in a sleeping area. Nurses in our Communicable Disease Program investigate these incidents, provide information, and manage cases.

208
ANIMAL BITES
INVESTIGATED

VECTOR-BORNE DISEASE SURVILLANCE

We participate in the Vector-Borne Disease Surveillance and Prevention Program in coordination with the Michigan Department of Health and Human Services (MDHHS). LCHD provides mosquito and tick monitoring data to MDHHS as well as uses surveillance data to notify the public of risks related to emerging vector-borne diseases.

**LCHD PARTNERED WITH 10
DIFFERENT LOCAL LOCATIONS
FOR TRAPPING**



ENVIRONMENTAL HEALTH IMPACT

345
Well and Septic
Permits issued

395 
Well and Septic
Applications



45 
Positive Water
Samples

 **13,321**
Seasonal Campsites
Inspected

345
General Complaints

 **18**
Pool Inspections

81
Well and Septic New
Construction

 **11**
Sewage Complaints



ENVIRONMENTAL HEALTH IMPACT

The Environmental Health Division licenses and regulates food service establishments (i.e., restaurants) to ensure food safety. The mission of the LCHD, as it relates to food safety, is to promote and assess food-safe measures and sanitary conditions at all licensed food service establishments. Environmental Health staff accomplish this by assuring code compliance and following the practices and principles established in the Food Code to protect the health of our communities.

233

Temporary
Food Licenses
Issued

573

Food Service
Inspections

49!!!

Food Service
Complaints

334

Food Service
Licenses
Issued



ENVIRONMENTAL HEALTH IMPACT

Radon Action Awareness

One in four Michigan homes is expected to have radon levels that exceed the recommended federal action level. Radon is the second leading cause of lung cancer, behind smoking. You can't see, smell, or taste radon. The only way to know if you have elevated radon levels is to test.

Every January, the LCHD distributes free radon test kits for Lenawee County residents. A total of 203 Free Radon Kits were distributed in the month of January for Radon Awareness Month.



203
FREE RADON KITS
DISTRIBUTED

Beach Monitoring Program

LCHD Environmental Health Staff collect water samples from two public beaches in Lenawee County over the course of the summer swimming season. Weekly samples are collected from the public beaches at Hayes State Park and the Lake Hudson Recreation Area. To protect public health and to prevent the spread of disease, the samples are analyzed for E. coli bacteria levels.

In July, water samples from Hayes State Park detected high levels of E. coli bacteria. In response, LCHD issued a public advisory, posted signage at the beach, and shared advisory information on our website to ensure public awareness.

Advisory Posted
Hayes State Park

MATERIALS MANAGEMENT PROGRAM

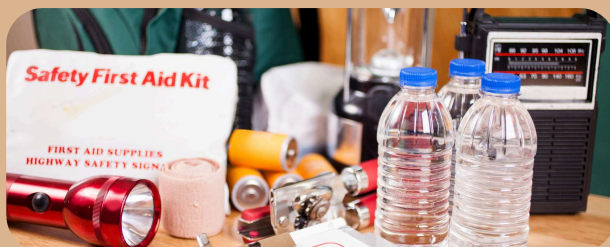
On Jan. 8, 2024, EGLE (Michigan’s Environment, Great Lakes, and Energy Agency) officially launched the start of the materials management planning process. The LCHD has taken various steps to replace our existing Solid Waste Management Plan with a new Materials Management Plan. The Materials Management Planning Committee has been formed and held its first meeting in June 2024.

ON MAY 11TH, THE SPRING CLEAN UP PROJECT COLLECTED 80,000 POUNDS OF HAZARDOUS WASTE



EMERGENCY PREPAREDNESS

The LCHD Emergency Preparedness Program focuses on ensuring that we are prepared to respond to intentional or unintentional public health emergencies. The Emergency Preparedness coordinator participated in various outreach events, providing information on emergency kits and signing up residents for Lenawee Alerts.



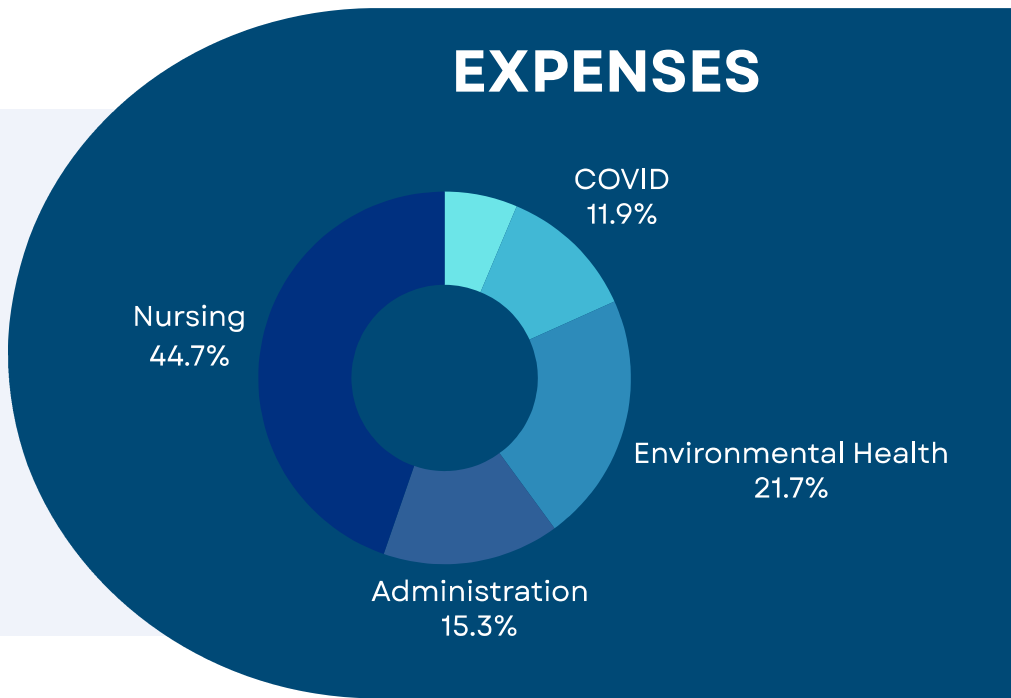
IN 2024, 681 LENAWE COUNTY RESIDENTS ENROLLED TO RECEIVE LENAWEE ALERTS

FINANCIAL OVERVIEW

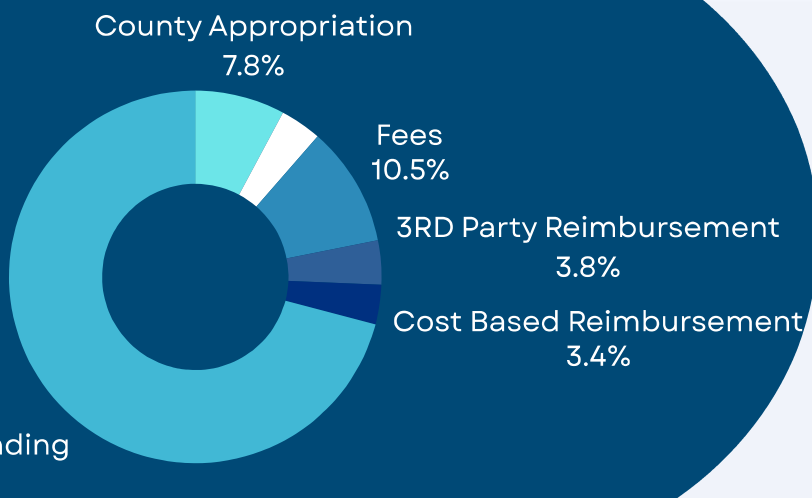
The Finance Division is responsible for maintaining a fiscally responsible local public health department.

By handling agency funds responsibly and frugally, they help to maximize LCHD's community impact.

EXPENSES



Revenue



LCHD is funded by state and federal funds, county funds, and grants.

For the 2023-2024 fiscal year, many different funding sources were utilized.

CONNECT WITH US

PERSONAL HEALTH SERVICES



EMAIL

personalhealth@lenawee.mi.us



PHONE

517-264-5226



Location

Human Services Building
1040 S. Winter St, Suite 2328
Adrian, MI 49221

ENVIRONMENTAL HEALTH DIVISION



EMAIL

EHDesk@lenawee.mi.us



PHONE

517-264-5214



LENAAWEE COUNTY
HEALTH DEPARTMENT

Follow Us



Facebook/LenaweeCountyHealthDepartment



@LenaweeHD



@lenaweehealth