

**LENAWEE COUNTY  
HEALTH DEPARTMENT**

**2017**



**ANNUAL  
REPORT**

Accredited by:  
Michigan Local Public Health Accreditation Program

# ***A MESSAGE FROM OUR HEALTH OFFICER***

October 2018

It is my pleasure to present the 2017 Annual Report for the Lenawee County Health Department. This report reflects the dedication and effort put forth by health department staff, the Board of Health, the Lenawee County Board of Commissioners, Lenawee County Administration and the many community partners that work together to improve the health of the citizens of Lenawee County. A few of the highlights from 2017 include;

- The Health Department received a Certificate of Accreditation with Commendation through the Michigan Local Public Health Accreditation Program; meeting 157 of 159 essential indicators
- Received funding to serve as the Designated Youth Tobacco Use Representative (DYTUR) for Lenawee County; providing the opportunity to engage with the community regarding tobacco prevention, which included providing tobacco education materials to all tobacco vendors in Lenawee County and conducting tobacco compliance checks with local law enforcement
- Participated in a grant that allowed the environmental health staff to conduct a surveillance program geared at identifying populations of Aedes species mosquitoes that are capable of transmitting the Zika virus and sponsoring a scrap tire collection event aimed to eliminate mosquito breeding sites
- After months of preparation and planning, a new electronic medical record (EMR) was implemented

We will continue to work with our community partners to promote the best possible health outcomes for all citizens of Lenawee County.

Best Regards,

Martha Hall, REHS/RS, MPH  
Health Officer

# OUR MISSION

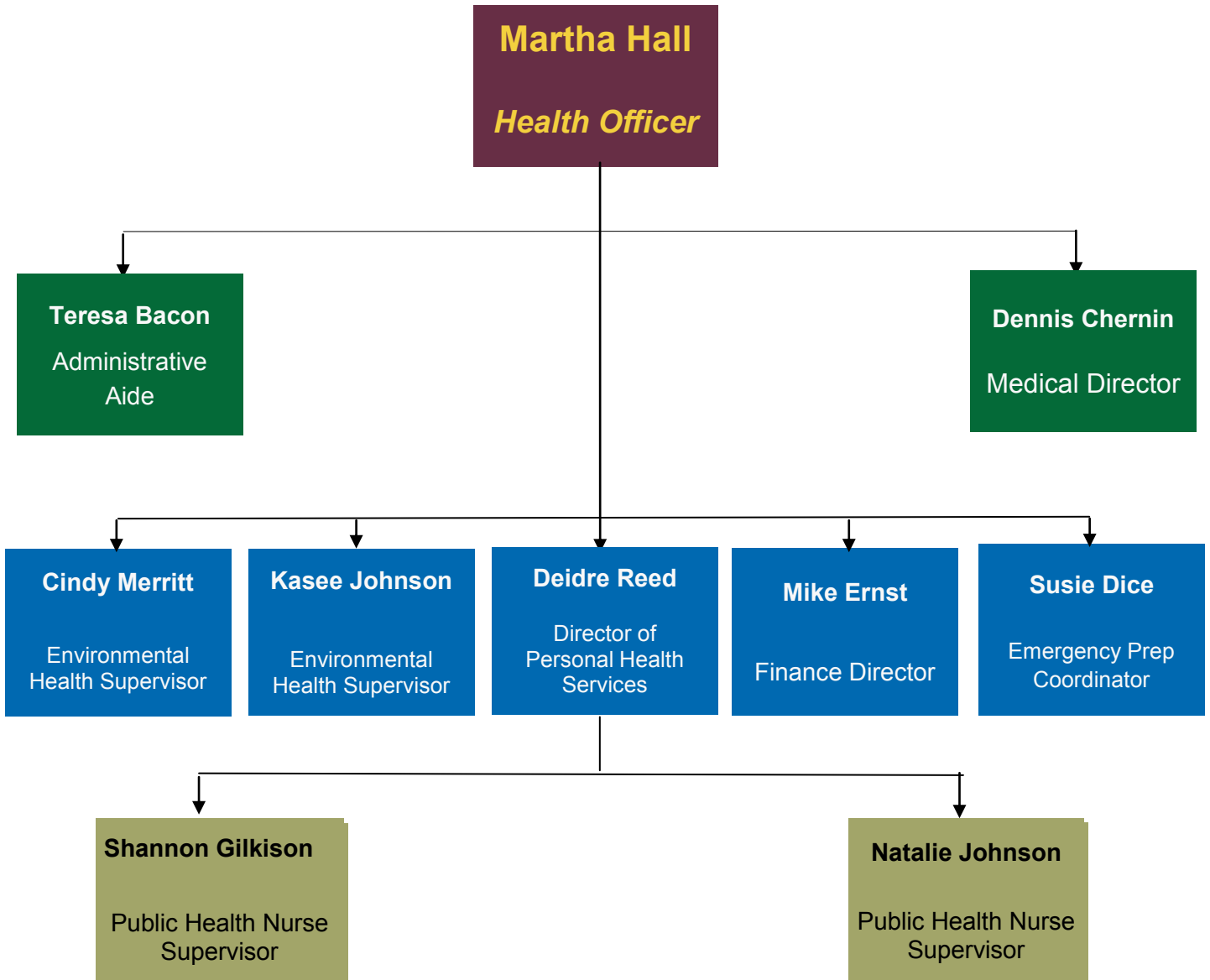


The mission of the Health Department is to enable the citizens of Lenawee County to enjoy the best possible state of health, free from avoidable disease, disability and the threat of premature death.

The department promotes positive health behaviors among all citizens while seeking out particularly vulnerable population groups and individuals in need of health information and special services.

This department continues to develop new and better ways to improve the quality of life in Lenawee County through prevention and control of communicable and chronic diseases and monitoring and attending to environmental health needs of the community.

# ADMINISTRATION



# LENAWEE COUNTY BOARD OF COMMISSIONERS



Individuals are pictured from left to right:

Back row - Roxann Holloway (County Clerk), Chris Wittenbach, Bob Knoblauch, Karol Bolton, Dawn Bales, Jim Driskill, John Lapham

Front row - Terry Collins, Ralph Tillotson, Dave Stimpson, Martin Marshall (County Administrator)

# BOARD OF HEALTH

Individuals are listed from left to right:  
Chris Wittenbach, County Commission  
John Frye, Vice Chair  
Lee Ann Minton, Member  
John Tuckerman, Chair  
Lorrie Tritt, Member



# 2017 ACCREDITATION

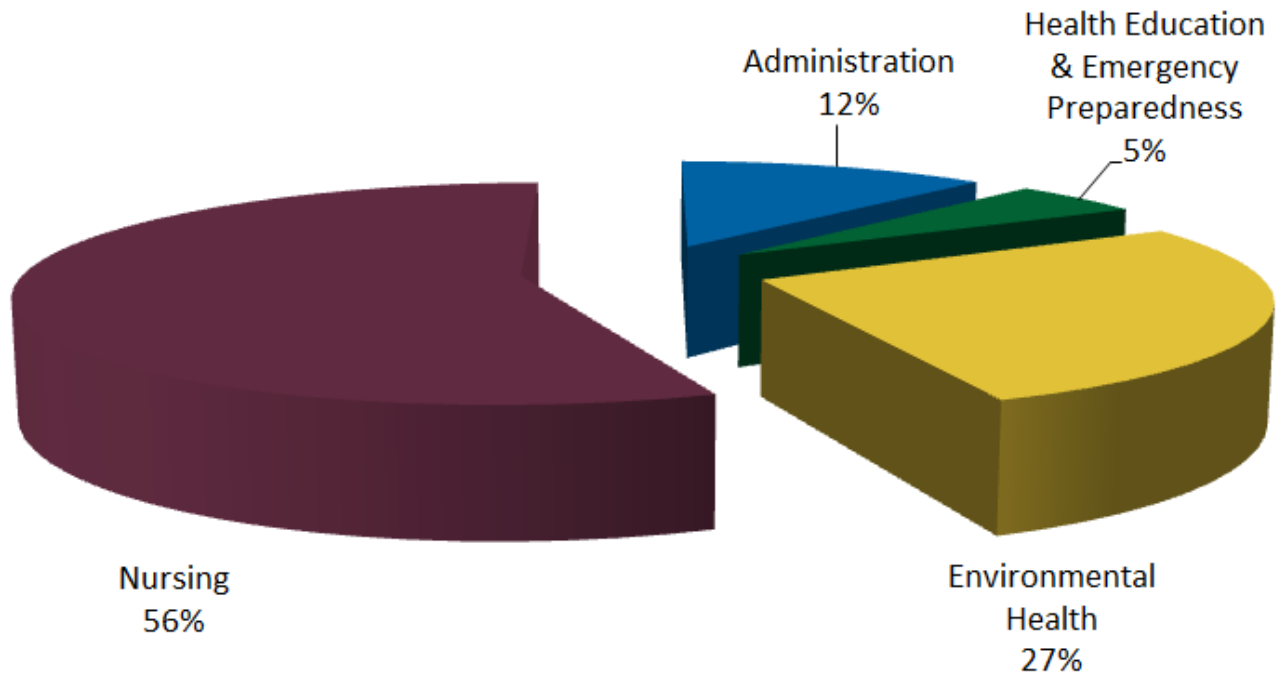


A week-long Accreditation Review by the Michigan Department of Health and Human Services resulted in the receipt of an Accreditation with Commendation Certificate. The Lenawee County Health Department met 157 of 159 essential indicators. The review is required every 3 years to assure and enhance the quality of local public health in Michigan by identifying and promoting standards, and evaluating and accrediting health departments on their ability to meet these standards.

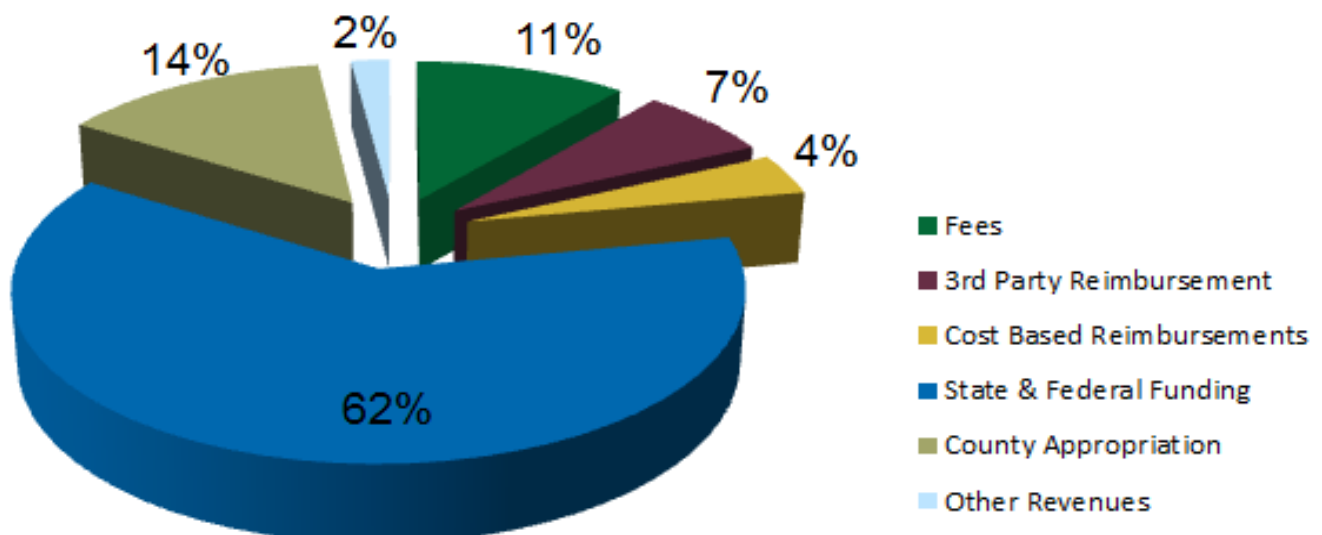


# FINANCIAL SUMMARY

## 2016-2017 EXPENSES



## REVENUE

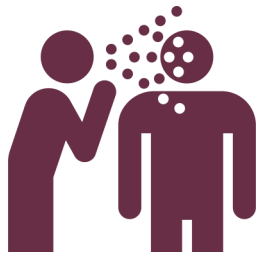


# 2017 Communicable Disease Report

Disease Group	Disease	2013	2014	2015	2016	2017
Foodborne	Campylobacter	13	13	16	16	11
Foodborne	Cryptosporidiosis	3	1	7	3	19
Foodborne	Giardiasis	2	2	3	3	7
Foodborne	Listeriosis	0	0	0	1	1
Foodborne	Norovirus	8	2	7	3	6
Foodborne	Salmonellosis	5	11	10	16	14
Foodborne	Shiga toxin-producing E. coli (STEC)	1	1	0	2	3
Foodborne	Shigellosis	1	3	0	1	0
Foodborne	Yersinia enteritis	0	0	0	1	1
<b>Foodborne</b>	<b>Foodborne Subtotal</b>	<b>33</b>	<b>33</b>	<b>43</b>	<b>46</b>	<b>62</b>
Influenza	Flu Like Disease*	1672	1666	929	1073	1468
Influenza	Influenza	44	42	28	66	80
<b>Influenza</b>	<b>Influenza Subtotal</b>	<b>1716</b>	<b>1708</b>	<b>957</b>	<b>1139</b>	<b>1548</b>
Meningitis	Meningitis - Aseptic	12	6	3	8	6
Meningitis	Meningitis - Bacterial Other	1	2	1	0	1
Meningitis	Streptococcus pneumoniae, Inv	4	4	2	1	3
<b>Meningitis</b>	<b>Meningitis Subtotal</b>	<b>17</b>	<b>12</b>	<b>6</b>	<b>9</b>	<b>10</b>
Other	Cyclosporiasis	0	0	0	0	1
Other	Hemolytic Uremic Syndrome	0	0	0	1	0
Other	Histoplasmosis	0	0	2	1	2
Other	Kawasaki	0	0	0	0	1
Other	Legionellosis	4	3	3	0	1
Other	Streptococcal Dis, Inv, Grp A	1	4	0	5	1
Other	Streptococcus pneumoniae, Drug Resistant	7	2	3	8	2
Other	Unusual Outbreak or Occurrence	1	1	0	19	34
<b>Other</b>	<b>Other Subtotal</b>	<b>13</b>	<b>10</b>	<b>8</b>	<b>34</b>	<b>42</b>
Rabies	Rabies Animal	0	1	0	0	0
Rabies	Animal Bites	1	0	0	86	194
<b>Rabies</b>	<b>Rabies Subtotal</b>	<b>1</b>	<b>1</b>	<b>0</b>	<b>86</b>	<b>194</b>
Tuberculosis	Tuberculosis	0	<5	<5	0	<5
<b>Tuberculosis</b>	<b>Tuberculosis Total</b>	<b>0</b>	<b>&lt;5</b>	<b>&lt;5</b>	<b>0</b>	<b>&lt;5</b>

# PERSONAL HEALTH

**321**



communicable disease  
**INVESTIGATIONS**

**463**



sexually transmitted infections  
**DIAGNOSIS & TREATMENT**

**839** WOMEN SERVED

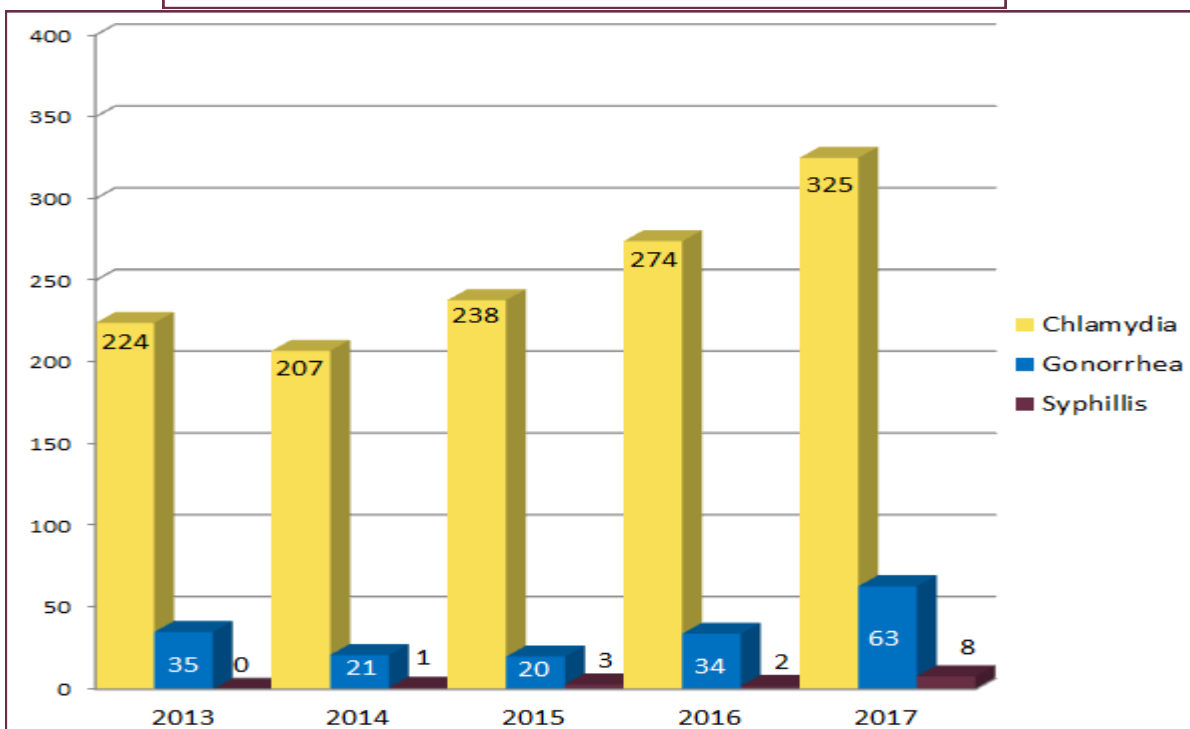
reproductive health program



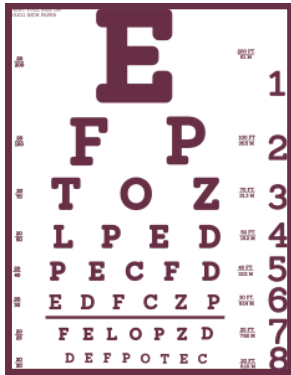
**145** women served

**BREAST & CERVICAL CANCER CONTROL NAVIGATION PROGRAM**

**5 YEAR REPORT  
SEXUALLY TRANSMITTED INFECTIONS**



# PERSONAL HEALTH



**7,855**  
VISION  
screens



blood  
lead  
**TESTS**  
**56**

hearing  
**SCREENS**  
**5,437**



**15**



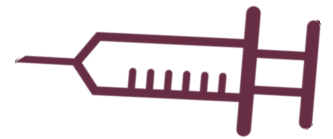
elevated blood lead  
**HOME VISITS**

**266**



**IMMUNIZATION**  
waiver  
appointments

**3,927**



**IMMUNIZATIONS**

**226** **ANIMAL BITES**  
investigated



**126**

plans of care  
**CHILDREN'S SPECIAL**  
**HEALTH CARE SERVICES**

# ENVIRONMENTAL HEALTH

**14**  
SEWAGE  
complaint  
INVESTIGATIONS



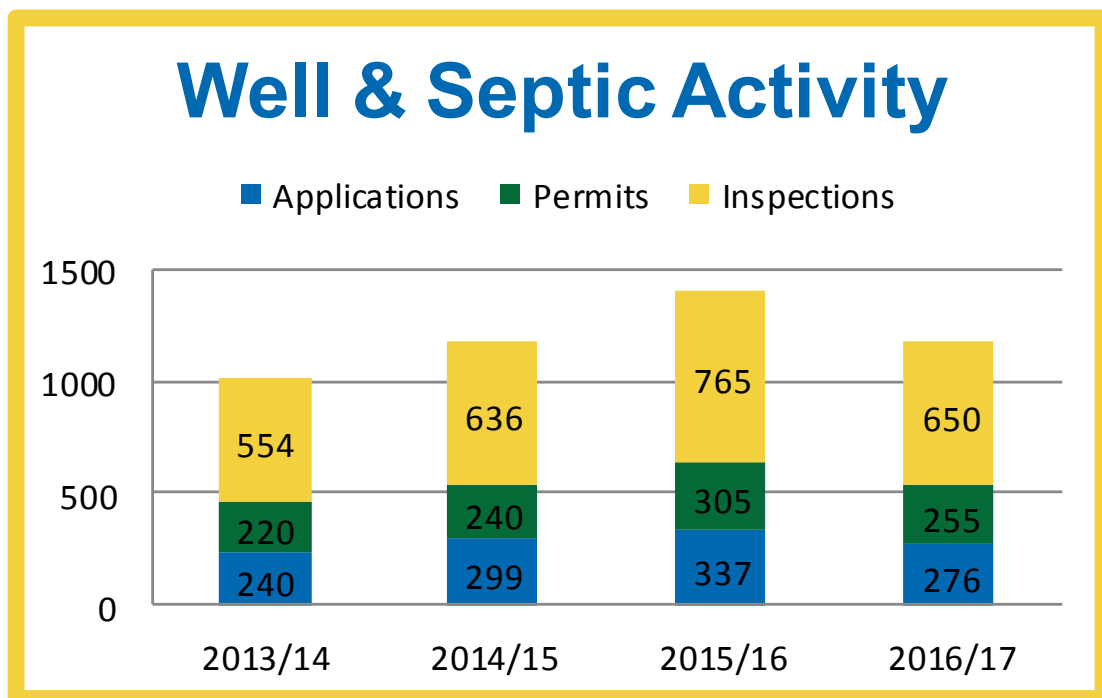
**650**  
well & septic  
INSPECTIONS



**276**  
WELL & SEPTIC  
permit  
applications



**6**  
water  
COMPLAINT  
investigations



# ENVIRONMENTAL HEALTH




**835**  
food  
**INSPECTIONS**



**245**  
temporary  
**FOOD LICENSES**



**65**  
manager certification  
**CLASS PARTICIPANTS**



**321**  
fixed food  
**LICENSES**



**981**  
**FOOD HANDLER**  
class participants

**12,186**  
seasonal  
**CAMPSITES**



**23**  
swimming pool  
**INSPECTIONS**

# EMERGENCY PREPAREDNESS

## Distribution Node Exercise

On September 27, 2017, Lenawee County Health Department staff took part in a full scale emergency preparedness exercise. This exercise allowed the Health Department to test the ability to receive, inventory and distribute large quantities of antibiotics to local partners. Staff had the opportunity to use material handling equipment, practice on computerized inventory management software and interact with local partners. A total of 10 local agencies, state government, and private businesses participated.



## TABLETOP EXERCISE

On June 1, 2017, the health department's Emergency Preparedness Coordinator conducted a Tabletop Exercise with emergency preparedness partners. In a disease emergency, the health department has plans to open community Points of Dispensing, or PODs, to dispense medication quickly to prevent people from becoming ill. Recognizing that not all individuals will be able to travel to an open POD, the health department has worked with local agencies, such as nursing homes and detention centers, to create a closed POD plan where staff of the agencies can dispense medication to their own residents. The purpose of the discussion based exercise on June 1 was to discuss the closed POD process and identify any areas for improvement.

# EDUCATING OUR COMMUNITY...

The Clothesline Project is a collaboration between the Greater Lenawee Tobacco Reduction Coalition & the Lenawee County YOUTH Council

T-shirts are displayed at the Lenawee County Human Services Building to bring awareness to the unnecessary tobacco related deaths in Lenawee County.



## LOVE YOUR LUNGS - 2017



Pictured (left to right): Health Officer - Martha Hall, Grand Prize Winner - Andrew Selenko, and Representative Bronna Kahle

# EDUCATING OUR COMMUNITY...

## 2017 TIRE COLLECTION



The Lenawee County Large Tire Collection Event was held on August 26, 2017 at the Lenawee County Fairgrounds. More than 3,000 tires of different sizes were collected. Funding for the event came from a grant that the Lenawee County Health Department received to prevent the expansion of Zika virus via elimination of spots where mosquitos can breed.

## WEAR RED DAY AT THE HEALTH DEPARTMENT



On February 2, 2017, staff at the Lenawee County Health Department wore their best red to support and raise awareness for Women's Cardiovascular health.

# EDUCATING OUR COMMUNITY...

**100% of tobacco vendors in Lenawee County received tobacco vendor education to prevent sales of tobacco to minors.**

## INCREASING HEALTH AWARENESS WITH SOCIAL MEDIA

**454**



**SOCIAL MEDIA**  
posts

**970**



face book  
**LIKES**

The Health Department continues to utilize social media to promote services, a health issue, or a program highlight.

## TIPS CLASSES OFFERED

Training for Intervention ProcedureS empowers employers to take a proactive approach toward preventing alcohol misuse. **TIPS** training teaches how to recognize the signs of intoxication, to reduce the chance that an alcohol related incident will occur.



**20**  
**TIPS**  
**CLASS**  
participants

Lenawee County Health Department  
Annual Report  
October 1, 2016 - September 30, 2017



Visit us on Facebook and Twitter or visit our website:  
[lenaweehealthdepartment.org](http://lenaweehealthdepartment.org)