

**Discover the Beauty of Lenawee County.**  
Embrace the adventure.

Lenawee County

# PARKS & RECREATION PLAN

2025-2029



**Shaped by our community**

Created with input from our residents, reflecting the community's vision for vibrant and accessible outdoor spaces.

[lenawee.mi.us](http://lenawee.mi.us)

[@lenaweecounty](https://www.instagram.com/lenaweecounty)



## **2024 LENAWEЕ COUNTY BOARD OF COMMISSIONERS**

David Stimpson, District 1  
Dustin Krasny, District 2  
Nancy Jenkins-Arno, District 3  
Dawn Bales, District 4  
Karol Bolton, District 5  
Terry Collins, District 6  
Kevon Martis, District 7  
Ralph Tillotson, District 8  
James Van Doren, District 9

## **2024 LENAWEЕ COUNTY PARKS AND RECREATION COMMISSION**

Ralph Tillotson, Adrian - Chair  
Karol Bolton, Adrian  
Nancy Jenkins-Arno, Clayton  
Dawn Bales, Madison Township  
Dan Bruggeman, Adrian

## **2024 LENAWEЕ COUNTY STAFF**

Kimberly Murphy, County Administrator  
Shannon Elliott, Deputy Administrator  
Tim Mehan, Maintenance Superintendent Buildings & Grounds  
Rob VanNieuwenhze, Deputy Maintenance Superintendent Buildings & Grounds  
Jennifer Ambrose, Marketing & Communications Coordinator  
Carissa Zubke, Administrative Coordinator

## **PLAN APPROVAL AND ADOPTION**

Lenawee County Parks Commission..... August 19, 2024  
Lenawee County Board of Commissioners ..... October 9, 2024  
Michigan Department of Natural Resources ..... \_\_\_\_\_

# TABLE OF CONTENTS

Introduction	4
Administrative Structure	5
Community Description	6
Recreation Inventory	13
Description of Planning Process	45
Description of Public Input Process	45
Goals and Objectives	52
Action Program	55
Appendix - Population Summary	A1



# INTRODUCTION

The purpose of this Parks and Recreation Plan is to inventory existing recreational opportunities and facilities available to residents of Lenawee County, identify problems and future needs, and establish a plan which addresses identified problems and assures adequate recreational services and facilities in a programmed systematic manner for both the present and expected future population.

The plan is intended to be a policy guide for Lenawee County officials in developing efficient recreational services and facilities.

This recreation plan evaluates the comprehensive recreational needs of the residents of Lenawee County for playgrounds, neighborhood and community parks, regional parks, and recreational opportunities; and prescribes a plan that accommodates and fulfills these needs.


The Lenawee County Parks and Recreation Commission is responsible for development of this plan with the assistance of Region 2 Planning Commission staff acting as consultant to the Commission. The Commission assisted in the inventory of existing recreational facilities and programs and provided invaluable assistance in plan preparation and policy recommendations. The Commission consists of five members representing the County Board of Commissioners and the general

public. Two members of the Parks Commission are also members of the Lenawee County Planning Commission.

It is appropriate that the plan is periodically reevaluated to ensure an up-to-date document that meets the needs and desires of Lenawee County. Recommended procedures for reevaluation of the Plan shall be that the Parks and Recreation Commission reevaluate the contents annually, particularly considering whether the goals and objectives are being met, and that the five-year short-range plan is kept current.

The 2025-2029 edition of the Lenawee County Parks and Recreation Plan was developed in accordance with the Guidelines for the "MDNR Guidelines for the Development of Community Parks and Recreation" as revised by the Michigan Department of Natural Resources in November 2018.

**CHECK OUT OUR WEBSITE**



Visit [lenawee.mi.us](http://lenawee.mi.us) to see pictures of our six County parks, learn more about the amenities, and to make reservations.

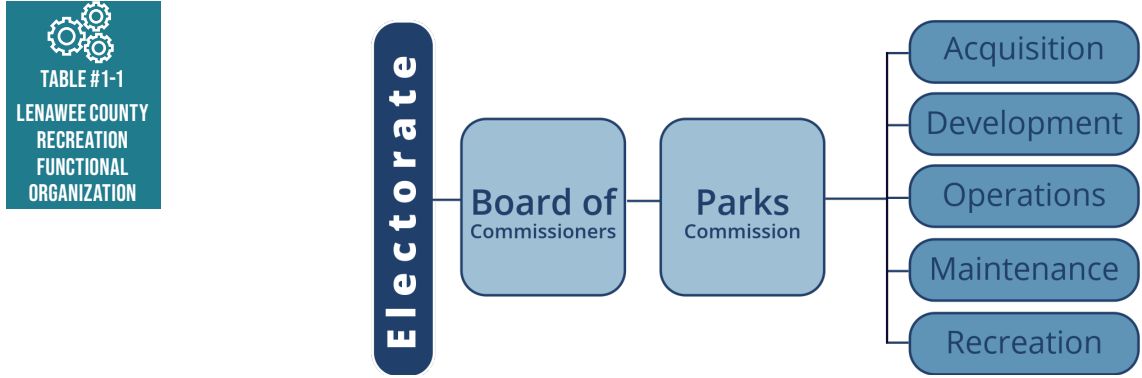
# ADMINISTRATIVE STRUCTURE

## LEGAL ADMINISTRATIVE STRUCTURE

Under the present system, as outlined in P.A. 156 of 1917, the Recreation and Playgrounds Act, the County Board of Commissioners created the Lenawee County Parks and Recreation Commission which consists of five members.

This Commission is responsible for planning, development, preservation, administration, maintenance, and operation of parks and recreation facilities. Thus, the Commission, whose sole responsibility is parks and recreation, can coordinate decisions and programs on a county level as well as make contractual arrangements and coordinate with local units of government for the development and maintenance of park lands and recreational facilities in communities and/or neighborhoods across the county.

The following table illustrates the administrative structure for county park development and recreation planning:



The County Parks and Recreation Commission’s personnel structure consists of part-time seasonal employees, caretakers, and volunteers. Lenawee County does not employ a full-time parks director. Rather, the parks and recreation program is under the supervision of the County Administrator. The Parks and Recreation Commission is comprised of five (5) members; four County Board of Commissioners and one at-large member.

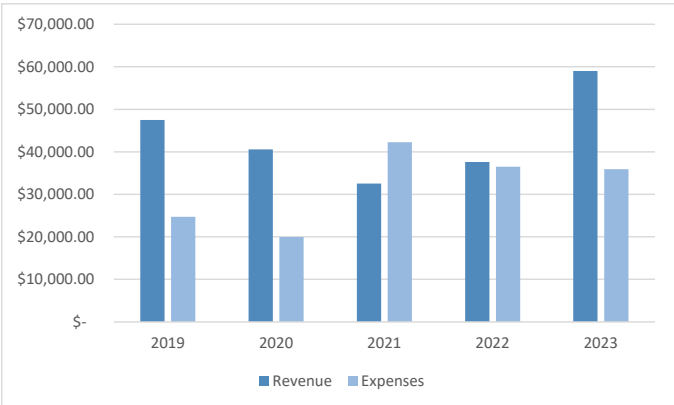
## FUNDING

A successful recreation program usually relies on many sources of revenue such as general tax dollars, grants, revenue sharing funds, donations, crowdfunding, fundraisers, as well as gifts from citizens.

Annual parks revenues in Lenawee County between 2019 and 2023 averaged \$43,000. That average includes both state and federal grants, rents, contributions, and donations, as well as other miscellaneous revenues including an annual appropriation from the County’s general fund.

Parks and recreation funds have been utilized primarily for maintenance and upkeep of the county’s six park facilities. The largest expenditure categories are grounds upkeep and building repairs and maintenance. Having revenues in

TABLE #2-1  
PARKS REVENUE & EXPENSES



excess of expenditures has allowed Lenawee County parks to create a small fund reserve that can be used for emergency repairs or a larger park improvement.



## COMMUNITY DESCRIPTION

Lenawee County is located in southeastern Lower Michigan south of the I-94 corridor between Detroit and Chicago. Nearby urban areas include Toledo, Ann Arbor, and Jackson (see Map 1-1).

Lenawee County is characterized by two urban areas (UAs) surrounding the cities of Adrian and Tecumseh. In addition to these urbanized areas, there are 10 other cities and villages in the County (see Map 1-2). The Adrian Urbanized Area includes the City of Adrian and the townships of Adrian and Madison. The Tecumseh Urbanized Area includes the City of Tecumseh and the townships of Raisin and Tecumseh. According to the 2020 Census, 29,206 people live in the Adrian UA and 13,684 people live in the Tecumseh UA, which together account for 43% of the County's population. The Irish Hills-Devils Lake (IH-DL) Recreational Area includes the villages of Addison, Cement City, and Onsted and the townships of Cambridge, Franklin, Rollin, and Woodstock. According to the 2020 census, 15,428 people live in the Area, accounting for 16% of the County's population. The remaining townships, villages, and cities comprise Rural Lenawee County. According to the 2020 Census, 41,105 people lived in Rural Lenawee County, accounting for 41% of the County's population. (More detailed information regarding the demographics of Lenawee County can be found in Appendix A).

# LENAWEE COUNTY: A BREATH OF FRESH AIR, A WORLD OF POSSIBILITIES

## LAND USE

The most current source of data on land use is the Lenawee County Comprehensive Land Use Plan, which was adopted in 2002. That plan calls for 'Intensive Development' within the Clinton-Tecumseh-Adrian (C-T-A) Urbanizing Corridor as well as within the vicinity of the cities of Hudson and Morenci and the villages of Addison, Blissfield, Britton, Deerfield, and Onsted. 'Open Space Development/Recreation' is called for around the lakes located in the northwestern corner of the County. 'Low Intensity Development' is proposed predominantly at points around the periphery of the C-T-A Urbanizing Corridor; the 'Open Space Development/Recreation Area'; the City of Morenci; and the villages of Addison, Cement City, Clayton, and Onsted. 'Intensive Agriculture' is called for in the southeastern portion of Lenawee County from Macon Township in the north to the City of Morenci in the south. Greenways are proposed along major waterways. Large areas of parkland are also identified throughout Lenawee County (see Map 1-3).

Under a half of the population in Lenawee County is concentrated in the Adrian and Tecumseh Urbanized Areas (UAs). Because public sewer facilities are available in much of this area, the Adrian and Tecumseh UAs contain some of Lenawee County's most intensive concentrations of residential, commercial and industrial land uses. The incorporated villages and cities outside of the UAs also contain high-density residential, commercial and industrial uses but not at the intensities found within the urban core. In some instances, the County has witnessed signs of urban sprawl as low-density residential development occurs in rural areas. The Irish Hills-Devils Lake (IH-DL) Recreational Area and the rural townships primarily contain agricultural and low-density residential land uses. However, there are small pockets of commercial and industrial use in these areas. Generally, future land use in Lenawee County is expected to retain the existing pattern of development. Most of the high-density residential, industrial and commercial development is likely to take place in the Adrian and Tecumseh UAs and incorporated cities and villages. Low-density residential development is likely to take place in rural townships.

## TOPOGRAPHY

The topography of Lenawee County was determined by the movement of the continental glaciers. One element of topography is elevation which indicates the altitude of the land above sea level expressed in feet. When studying a relatively small area, such as Lenawee County, the actual measurements of elevation above sea level are not as important as the changes in these levels throughout the area. It is these changes in elevation that provide a feeling for the contour of the land as it rises and falls throughout the County.

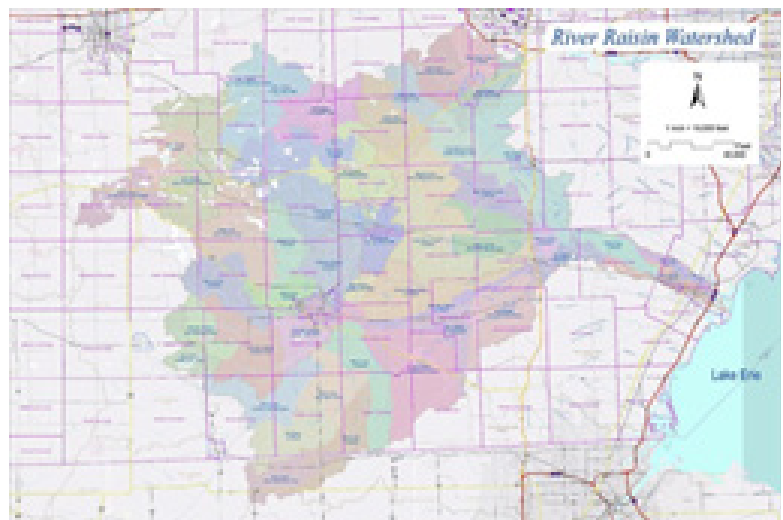
The Thumb Upland, of which Lenawee County is a part, was formed as the glaciers moved south and retreated north across Michigan. This upland extends from the Ohio-Indiana line northeast to Huron County which is located at the tip of the Thumb of Lower Michigan and borders Saginaw Bay and Lake Huron. Lenawee County lies at the southern portion of this upland and has elevations ranging from about 700 feet above sea level in the extreme southeastern corner of the County, to an elevation of slightly more than 1,200 feet in Woodstock Township. Elevations in the Irish Hills area of the County range from 1,000 feet to 1,200 feet above sea level.

Generally, the County is relatively flat to moderately hilly as a result of uneven deposition of glacial material. The portion of the county extending from Fairfield Township in a northeasterly direction to Macon Township is a gently sloping or nearly level plain. The portion of the County extending diagonally from Medina and Seneca townships to Clinton and Tecumseh townships is composed of rolling hills, while the northwestern portion becomes heavily rolling with a number of lakes and peat swamps. The most rugged topography occurs in the townships of Woodstock, Cambridge, Franklin, Rollin, and Rome. Prominent ridges also are located along the ancient beaches of the glacial lakes in the eastern area of the County.

## WATER FEATURES

The largest watershed in Lenawee County is the River Raisin, which drains eastward into Monroe County and Lake Erie.

It contains an area of approximately 595 square miles, or more than 78% of the County. The Bean Creek watershed, which drains into Ohio, contains approximately 135 square miles or about 18% of the County. A smaller area of about 24 square miles, approximately 3% of the County, mostly in Riga Township, drains in Monroe County and Ohio via manmade drainage ways and small creeks.



Surface water features can be classified in three major types in Lenawee County: 1) lakes, ponds, and reservoirs; 2) streams and rivers; and 3) wetlands. The 252 lakes and ponds cover a total area of 5,496 acres and were formed largely as a result of the depressions (kettle holes) left during glacial periods. These depressions were filled with groundwater to the level of the surrounding water table. Lakes and ponds are the major surface water reservoirs that either collect or release water to inlet and outlet streams. Streams and rivers are surface water features that are primarily responsible for drainage. Waters from precipitation, runoff, lake outlets, and the groundwater inflow, drain through a series of small minor tributaries, streams, and rivers that eventually lead to major rivers or the Great Lakes in this part of the County. Wetlands are similar to lakes and ponds in their formation and water source. They are also surface depressions (vernal pools), but because of their relative shallowness, they constitute a different type of environment from lakes. Source of water for wetlands include: flow from the water table, precipitation, inlet streams, and accumulation from poorly drained lands. Fens are unusual, and increasingly rare, wetlands that receive water from underground alkaline springs rather than from precipitation. Lenawee County is home to the Ives Road Fen Preserve, a unique 700-acre preserve.

Water resources have important recreational values for fishing, boating, and swimming, as well as the intrinsic natural beauty they possess. Streams in Lenawee County have been rated by the Michigan Department of Natural Resources relative to their navigability by canoe. Factors which affect a canoe's navigational ability are stream width, depth, vegetation, and physical obstructions such as bridges, dams, rocks, or fences.

Streams in Lenawee County have been categorized as "readily canoeable", "canoeable with difficulty", and "non-canoeable". The length of the River Raisin from Tecumseh to Blissfield is designated by the DNR as "readily canoeable", indicating that the river is at least 15 feet wide and is consistently deep throughout the year, being suitable for canoes as well as small motorized boats. Wolf Creek and the south branch of the River Raisin near Adrian are rated as "canoeable with difficulty", indicating that dense vegetation plus seasonal variations in water volumes cause some difficulty in canoeing. The remaining streams in Lenawee County are designated as "non-canoeable", due to their shallowness, narrowness, low water level, or degree of physical obstructions.

Maintaining good water is vital to the health and quality of life in Lenawee County.

## WILDLIFE HABITS

Wildlife habitats are places where animals naturally live with the necessary food and shelter needed to survive. These habitats can be extremely sensitive, especially for aquatic life, because of the delicate natural balances of food supplies and predators. Altering any portion or element of the habitat can create severe consequences to all forms of life within the entire ecosystem. A variety of wildlife can be found in Lenawee County. For example, the Department of Natural Resources manages habitats for eastern massasauga rattlesnakes, eastern wild turkeys, mallards, and osprey in the Onsted State Game Area, and habitats for small game including, pheasants, bobwhite quail, cottontail rabbits, deer, grassland songbirds, mallards, and eastern wild turkey, at the Lake Hudson Recreation Area. However, white-tailed deer are likely the most obvious species people come into contact with, especially along County roadways.

Aquatic habitats are those wildlife environments within or primarily associated with water. The quality and quantity of fish in lakes, streams, or marshes is determined by many factors including water temperature, velocity, and depth as well as the composition of the bottom and the quality of water including silt conditions, oxygen holding capacity, and chemical and mineral composition.

The Michigan Department of Natural Resources has rated streams for their suitability as fish habitats. Top Quality Warmwater Mainstreams contain good self-sustaining populations of warmwater game fish including: bass, bluegill, and northern pike. Mainstreams are over 15 feet wide and include the River Raisin, part of Wolf Creek, Fitts Creek, and Bean Creek. Second Quality Warmwater Mainstreams and Feeder Streams contain significant quantities of warm water fish, but game fish populations are limited due to poor water quality, a limited food supply, and conditions causing inadequate natural reproduction, such as: pollution, currents, and poor stream bed quality. Slater Creek is designated as a second quality warmwater mainstream, with feeder streams scattered throughout the County.



## SOILS

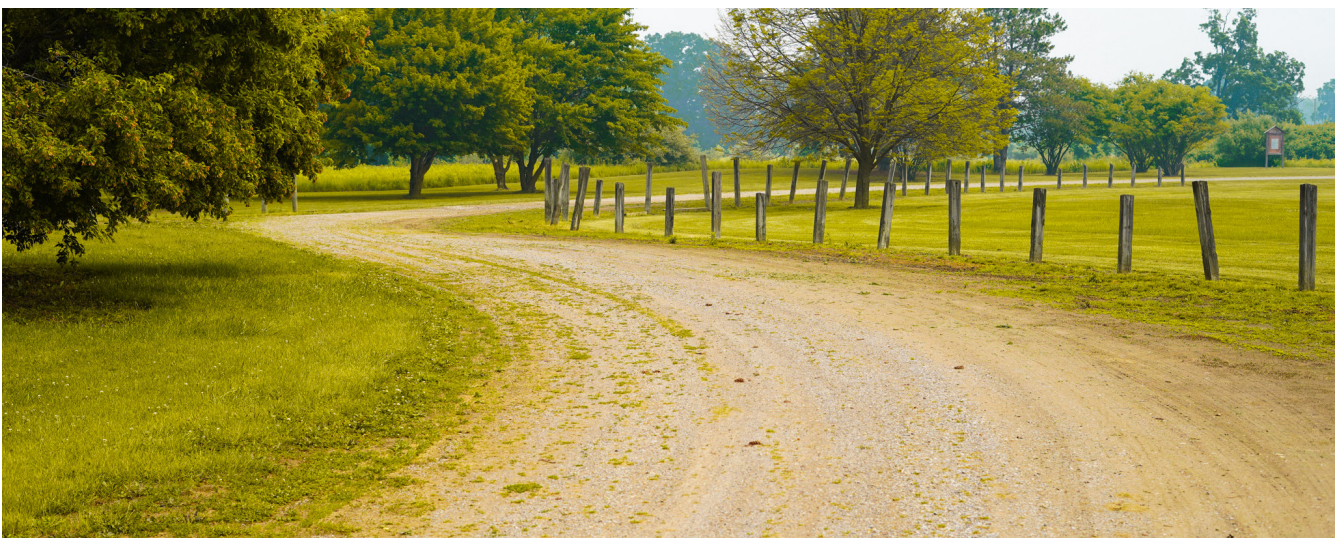
The soils in Lenawee County are probably one of its most significant natural assets. Rich soils deposited by Lake Erie, as it receded from its original boundaries, left some of the best farmland in the Midwest in the eastern and southern portions of the County (see Map 1-4). Soils in Class I, II, and III are best suited for crop production, with few, moderate, and severe limitations, respectively. Soils in Class IV and above are extremely limited for cultivation:

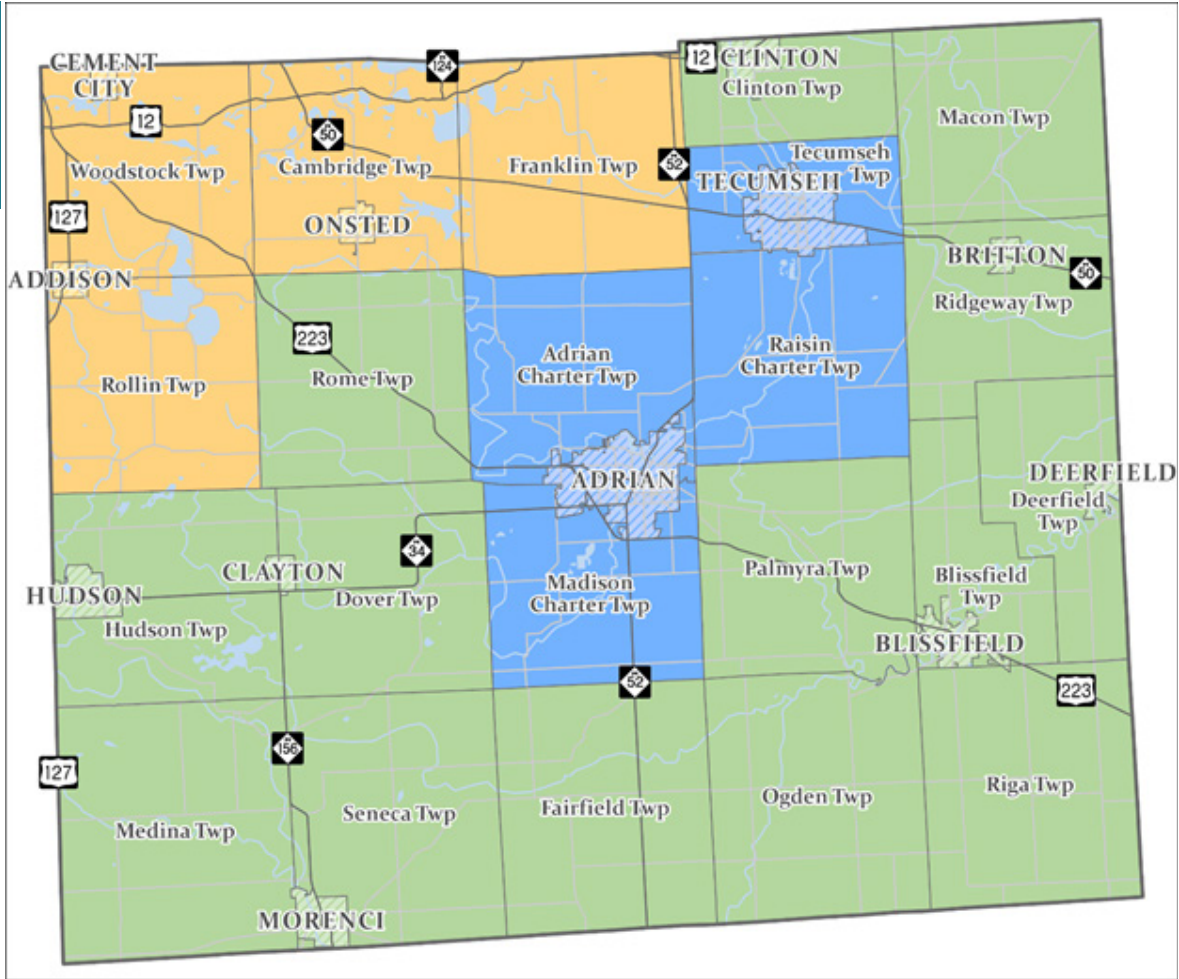
- Class I soils are somewhat scattered but there are large concentrations on the eastern edge of the county north of Deerfield, and long the southern edge of the county east of Morenci.
- Class II soils are also distributed throughout the county but they are highly concentrated in the area east of the Ridge in the former lake bed. These are highly productive soils but tend to be wet unless properly drained.
- Class III soils are found scattered throughout in areas west of the Ridge. These are marginal soils for crop production.
- Very few soils are shown as Class IV and above. There are only two small concentrations east of the City of Adrian. Otherwise, they are found in very small areas in the Irish Hills.

## ROADS

The road system within Lenawee County is anchored by three United States Highways – US-223, US-12, and US-127. US-223 bisects the County in a northwest-southeast direction, US-127 provides north-south access along the western portion of the County, and US-12 traverses the north part of the County in an east-west direction.

Michigan Highways supplement those three major roadways. There are a total of five state highways in the County: M-34, M-50, M-52, M-124, and M-156. M-34 and M-52 provide access to the urban center of Adrian. M-50 runs northwest-southeast, M-156 runs north-south between Morenci and Clayton, while only a small portion of M-124 extends into the County near Wampplers Lake. These major high-ways and State highways are further supplemented by a series of county arterial roads.

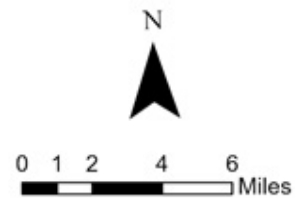




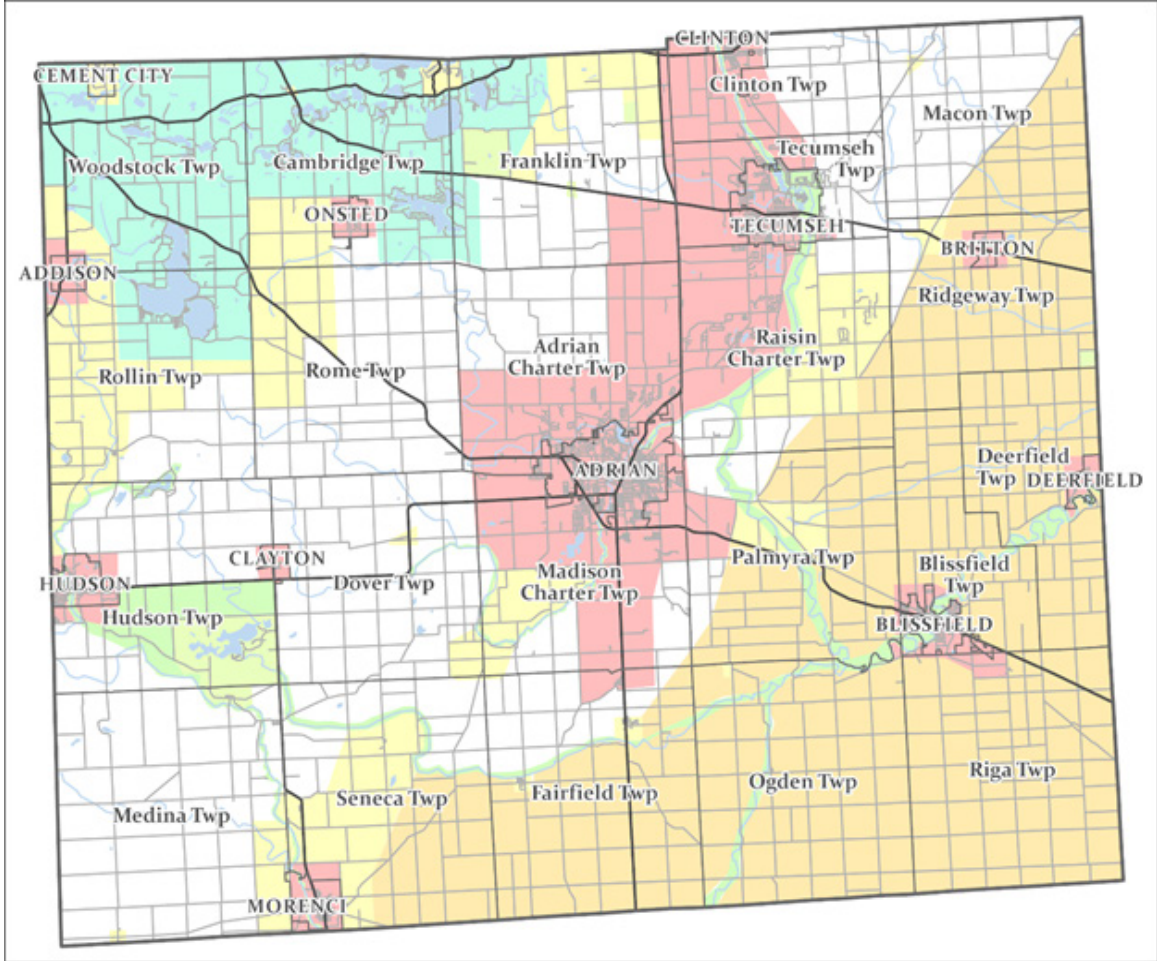
## Lenawee County Planning Regions

### Legend

- Adrian and Tecumseh Urbanized Areas
- Rural Lenawee County
- Irish Hills Recreation Area
- Cities and Villages



**Region 2**  
PLANNING COMMISSION  
Serving Hillsdale, Jackson & Lenawee Counties

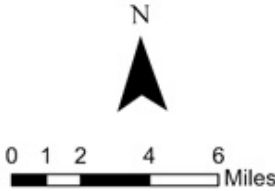


# Lenawee County Future Land Use

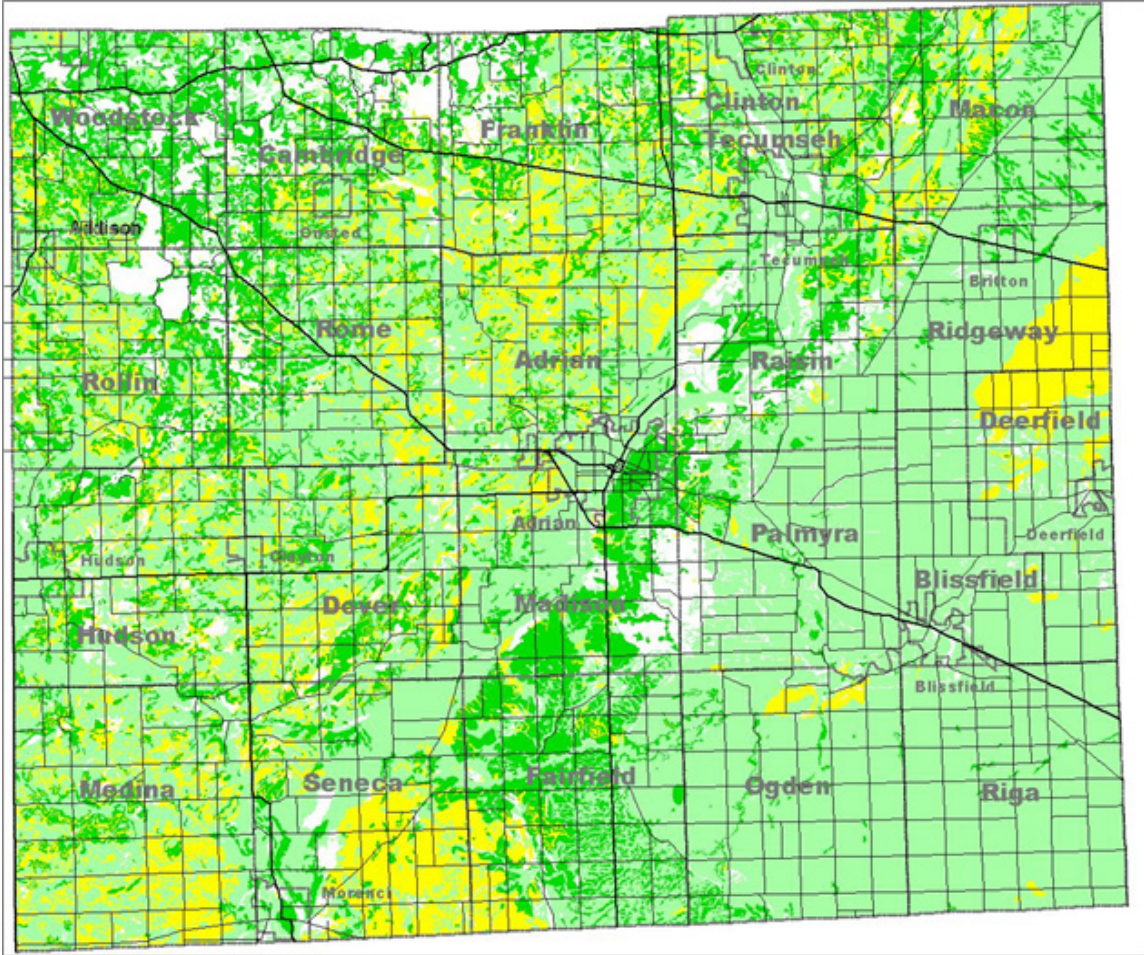
### Legend

- Agricultural
- Greenways
- Intensive Agricultural
- Intensive Development
- Low Intensity Development
- Open Space Development/Recreation
- Parks
- Highways

Adopted: May 16, 2002

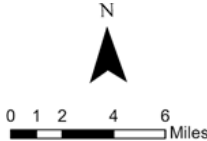


**Region 2**  
 PLANNING COMMISSION  
 Serving Hillsdale, Jackson & Lenawee Counties

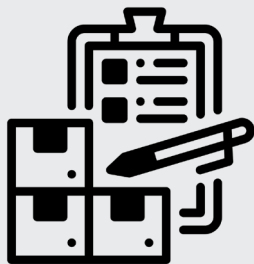


- Legend**
- Class 1 Soils
  - Class 2 Soils
  - Class 3 Soils
  - Class 4 Soils & Above

## Lenawee County Land Capability Classification



# RECREATION INVENTORY



## An inventory of the existing facilities in Lenawee County and its planning area is important in order to determine how the

community stands in terms of the adequacy of recreation facilities provided. With existing facilities documented, a clearer view of the strengths and weaknesses of the present facilities becomes apparent, providing a foundation on which proper emphasis for improvements can be made.

In terms of recreation land, the National Recreation and Park Association recommends a minimum of 10 acres of parkland per 1,000 persons made up of playgrounds and neighborhood parks, community parks, county parks, and large regional parks and preserves. This would mean if strictly interpreted for Lenawee County, a minimum of 983.4 acres of public parks and recreation lands in 2020. The inventory of parks and recreation facilities contained in this chapter indicates

that Lenawee County has more than 5,601 acres of parkland and more than 17 miles of trails. The County has unique circumstances that indicate an opportunity and a desire to achieve more than the minimum because of low-density development character, large expanses of vacant land, and the uniqueness of water resources.

Lenawee County maintains 6 parks (see Maps #2-1 and #2-2) with a total of 419 acres to provide recreational, social, and cultural opportunities; while leading in the preservation, conservation, restoration, and promotion of the natural, scenic, and historical resources of Lenawee County. No entrance fees are required and they are open 8:00 a.m. to dusk from Memorial weekend through Labor Day; unless otherwise noted.

### COMMUNITY PARKS

State, County, City, Village, & Township Parks

### RECREATION FACILITIES

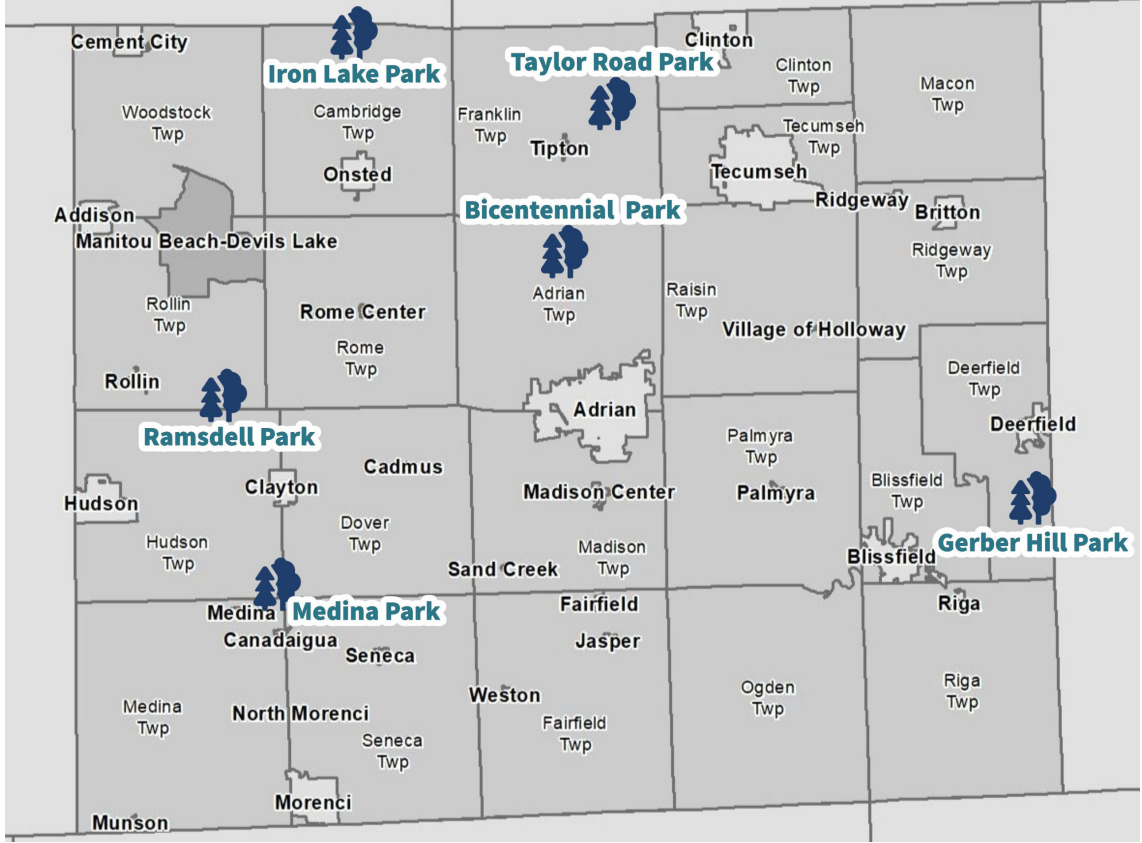
Libraries, Museums, Schools, Bowling, Golf Courses, etc

### TRAILS

Hiking, biking, walking, and running trails

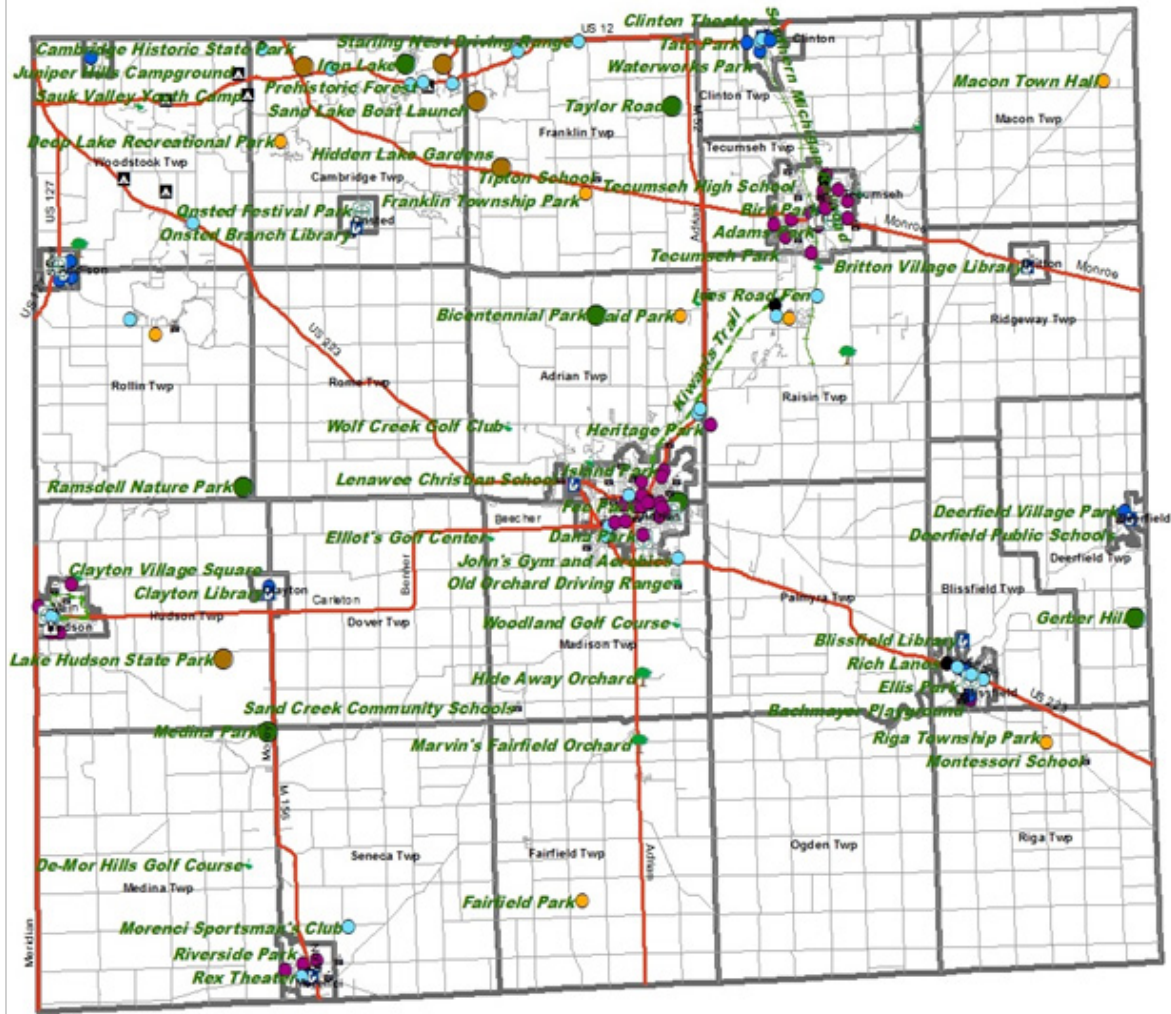
Lenawee County has 419 acres of county parks and 3,535 acres of state parks and at least 1,125 acres of municipal parks and 522 acres of school grounds (the acreage is unknown for some parks). Some of the parks also contain trails, increasing the mileage well beyond 17 miles.

  
 MAP #2-1  
 LENAWE COUNTY  
 PARKS





**MAP #2-2  
PARKS &  
RECREATION  
FACILITIES WITHIN  
LENAWEE COUNTY**

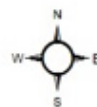


**Community  
Parks**

- County Parks
- State Parks
- City Parks
- Village Parks
- Township Parks

**Recreation  
Facilities**

- Museum
- School
- Bowling
- Campground
- Orchard



0 1 2 4 6 Miles

Map Created: 12/30/08  
Map Revised 11/14/14

Trails

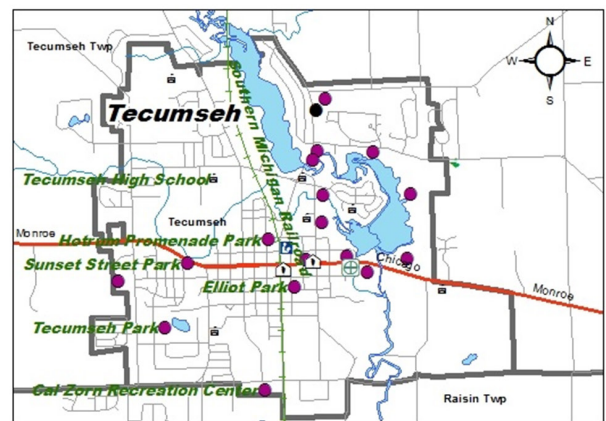
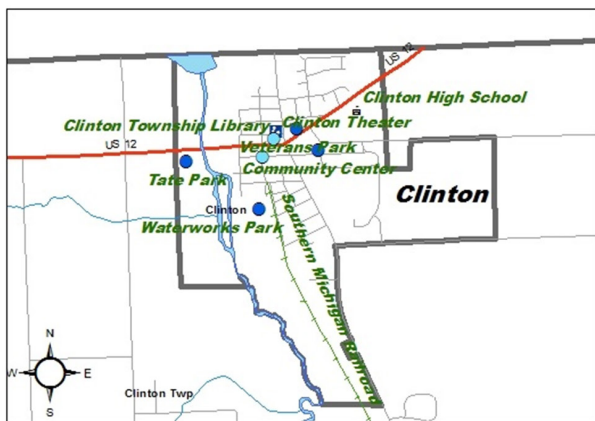
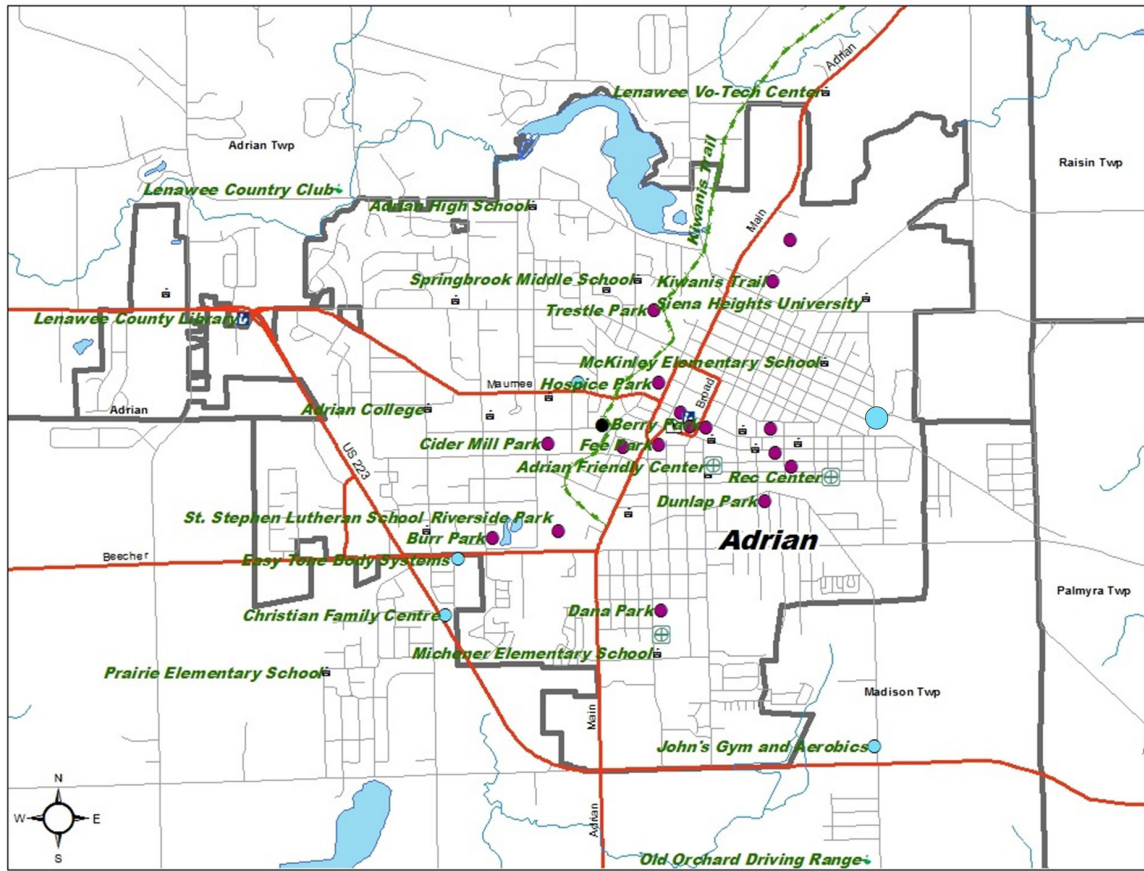
Scenic RR

Senior Center

Library

Golf Course

Private (misc.)



**Community Parks**

- County Parks
- Village Parks
- State Parks
- Township Parks
- City Parks
- +— Scenic RR

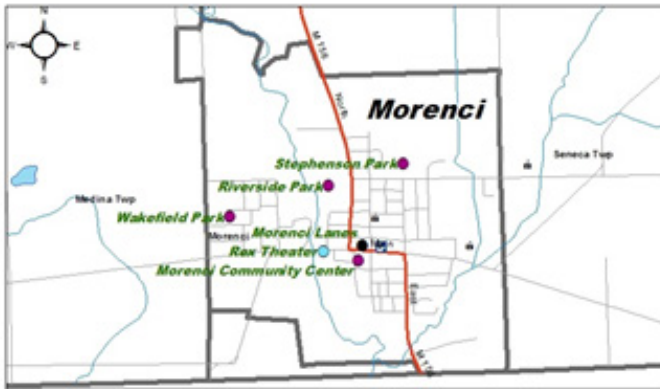
**Recreation Facilities**

-  Museum
-  Campground
-  Library
-  School
-  Orchard
-  Golf Course
-  Bowling
-  Senior Center
-  Private (misc.)



MAP #2-4

PARKS & RECREATION  
FACILITIES - ADDISON,  
BLISSFIELD, HUDSON &  
MORENCI



### Community Parks

- County Parks
- State Parks
- City Parks
- Village Parks
- Township Parks
- - - Trails
- - - Scenic RR

### Recreation Facilities

- Museum
- School
- Bowling
- Campground
- Orchard
- Senior Center
- Library
- Golf Course
- Private (misc.)



**INVENTORY OF LENAWEE COUNTY PARKS**

Lenawee County parks are intended for use by all persons, regardless of their ability. The County intends to comply with the appropriate accessibility standards and guidelines for play areas, outdoor developed areas, parking areas, and other facilities, which fall under the requirements of the Americans with Disabilities Act (ADA). Recent improvements to the County parks have been designed to comply with or exceed accessibility guidelines and standards and retrofit, when appropriate, those facilities that pre-date ADA standards.

The ranking system suggested by the Michigan Department of Natural Resources Guidelines was used to evaluate the accessibility of the County parks. The ranking system ranges from 1 to 5 as follows:

1. None of the facilities meet accessibility guidelines
2. Some of the facilities/park areas meet accessibility guidelines
3. Most of the facilities/park areas meet accessibility guidelines
4. The entire park meets accessibility guidelines
5. The entire park was developed/renovated using the principles of universal design

Each Park was evaluated using the Michigan Department of Natural Resources ranking system. The elements evaluated include parking areas, paths of travel from parking to activity areas, the activity areas themselves, and support facilities such as rest-rooms and surfacing.

**TABLE #2-1  
INVENTORY OF  
LENAWEE COUNTY  
PARKS**

LENAWEE COUNTY PARK	GENERAL LOCATION
Bicentennial Woods Park	Central area of Lenawee County
Gerber Hill Park	Eastern area of Lenawee County
Iron Lake Park	North area of Lenawee County
Medina Park	Southwest area of Lenawee County
Ramsdell Park	Western area of Lenawee County
Taylor Road Park	Northeast area of Lenawee County

# BICENTENNIAL WOODS

**History** Acquisition and development of this park was initiated by the Environmental Council of Lenawee in 1975 as a community bi-centennial project. Initial acquisition was funded by a loan from the Nature Conservancy, repayment of the loan was made 50% by United States Department of the Interior Land and Water Conservation Fund, and 50% by the County of Lenawee and many local private contributors.

**Description** Beautiful hiking trails wind through a prairie grass field and one of Lenawee County's virgin timber wood forests

**Location** Central, approximately 5 miles north of the City of Adrian

**Facilities** Soccer field, volleyball, playground area, softball field, ga-ga ball court, picnic shelters with grills and tables, electrical outlets at picnic shelter, electric hand water pump, and latrine

**Water Sources & Trails** The Black Creek runs through the property with primitive access from trails and there are approximately 2 miles of maintained winding trails through both field and wooded areas

**Capital Plans** Pickleball court, picnic table and grill replacements, bleachers for soccer fields, new playground, controlled prairie burn schedule, trail signage and benches

**Accessibility Ranking 3** Most of the park areas meet accessibility guidelines

**DNR Grants** 1977 LWCF (26-01023 A1) Acquisition –Acquire 78 acres for outdoor recreation  
1980 LWCF (26-011104 E) Development – Entrance Road, parking area, grading, seeding, picnic shelter LWCF sign

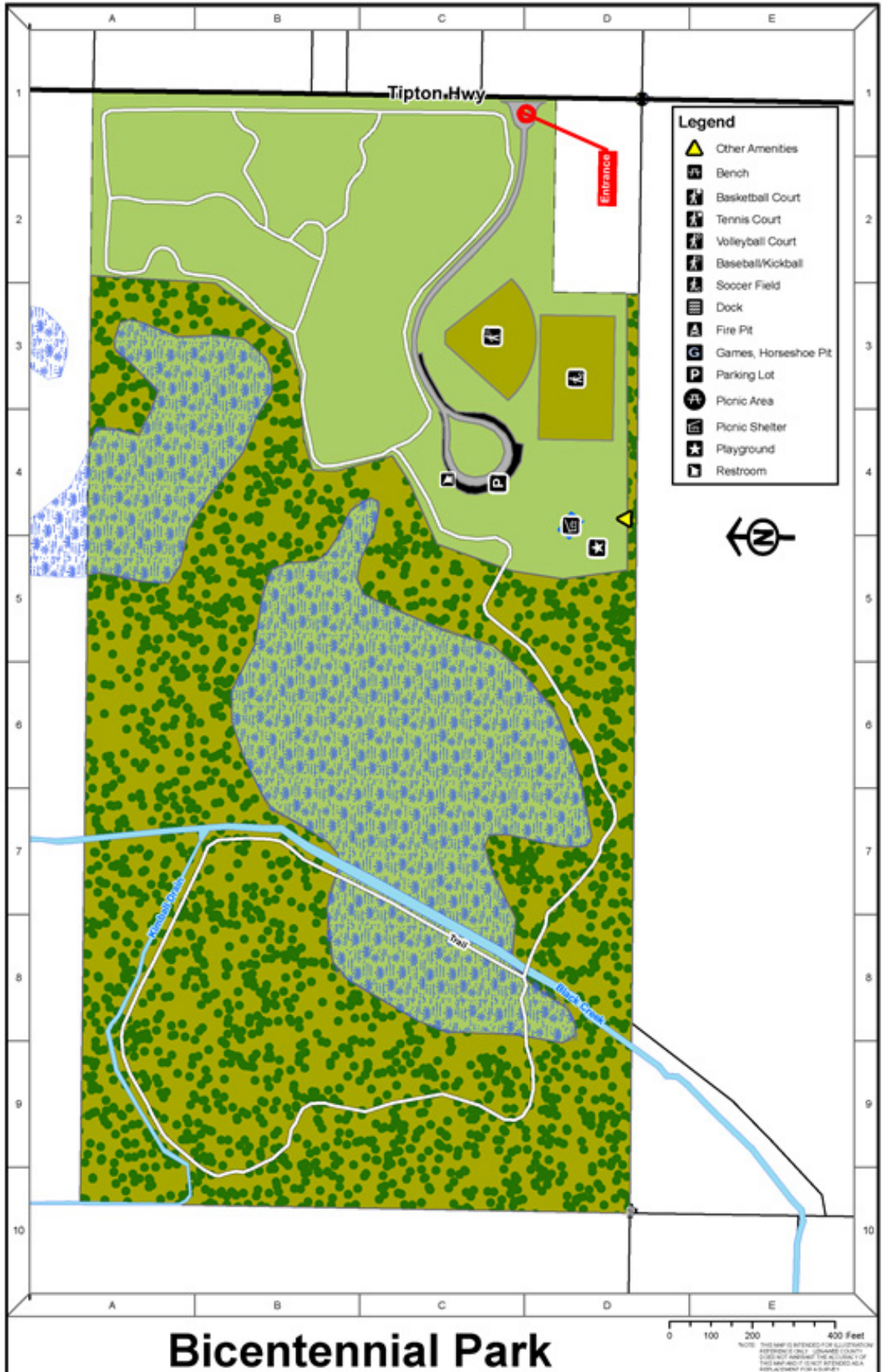
SERVING THE ENTIRE COUNTY, ALL AGES

78 ACRES





MAP #2-5  
BICENTENNIAL  
WOODS PARK



# GERBER HILL PARK

**History** Frank and Elizabeth Gerber bought this 19-acre parcel in 1935 for \$450. For many years they made it available to youth groups and neighborhood children for recreation and winter sledding, thus, the area became known as Gerber Hill. In 1988, the Gerber's donated the area to Lenawee County. Development was funded by the County and a major grant from the Michigan Natural Resources Trust Fund. The Park was dedicated by the Lenawee County Parks Commission in 1992.

**Description** Glaciers formed the park and left a sand base. There are both educational and recreational activities available.

**Location** Eastern section, approximately 5 miles northeast of Blissfield and 3 miles south of Deerfield

**Facilities** Interactive signage, tree identification, fishing dock, pavilion, soccer and baseball fields, volleyball, horseshoe pits, playground equipment, picnic shelters with grills and tables, and latrine

**Water Sources & Trails** There is a small stocked pond with a dock for fishing and there are approximately 3½ miles of maintained trails through both fields and woods

**Capital Plans** Install electrical outlets at each pavilion; pickleball court, metal roofing for the north pavilion, gravel for parking lots, concrete reinforcement for pavilion post, musical instrument equipment, fence replacement at baseball diamond

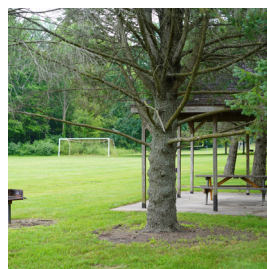
**Accessibility Ranking 3** Most of the park areas meet accessibility guidelines

**DNR Grants** 1989 BF (BF89-532) Development – Refurbish & develop Gerber Hill County Park with walking trails to include woodlot, wetland, native tallgrass prairie, & geologically interesting areas for environmental & educational purposes

2010 MNRTF (TF10-102) Development – Development to include shelter and educational facilities, sledding area sign, native prairie grasses, trail improvements, parking lot and entrance improvements, playground

SERVING THE ENTIRE COUNTY, ALL AGES

40 ACRES



  
**MAP #2-6**  
**GERBER HILL**  
**PARK**



# IRON LAKE PARK

**History** The County of Lenawee obtained the Iron Lake Access Park in 1959 from Norman and Edna Grogitsky.

**Description** County-owned public boat launch located on a 78-acre lake. This lake is approximately 63 feet deep at its deepest point and includes such fish as crappies, Largemouth Bass, Northern Pike, Bluegill, and Sunfish.

**Location** North section, located within the Irish Hills

**Facilities** Access to Iron Lake, boat launch, dock, and picnic table

**Water Sources & Trails** Maintained 50' waterfront access to 78-acre Iron Lake and there are no trails

**Capital Plans** Property line tree removal, signage upgrades, outhouse, drive graded and reworked


**Accessibility Ranking 2** Some of the park areas meet accessibility guidelines

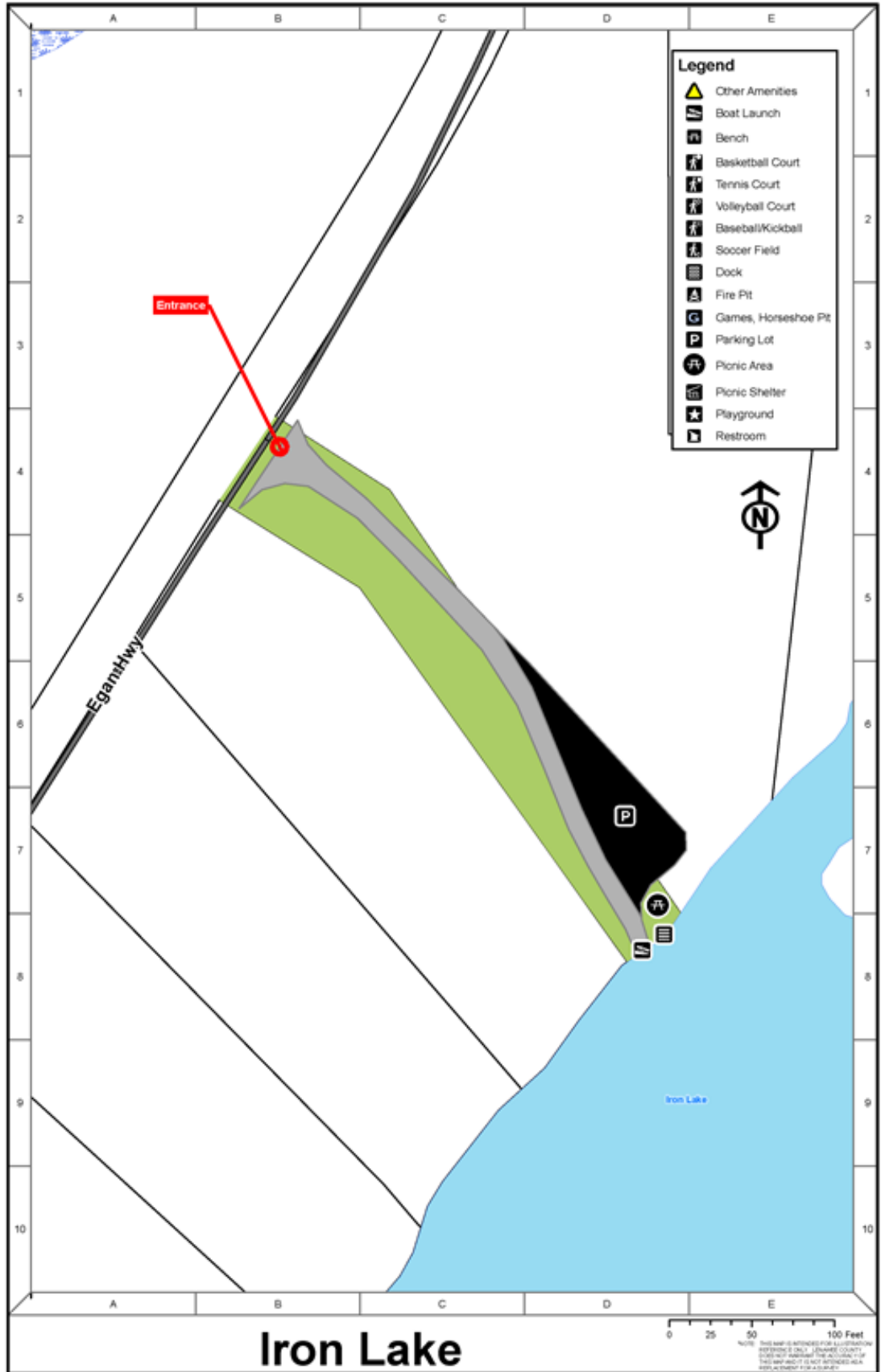
**DNR Grants** n/a

SERVING THE ENTIRE COUNTY, ALL AGES

1 ACRE



  
**MAP #2-7**  
**IRON LAKE PARK**



# MEDINA PARK

**History** The County of Lenawee obtained Medina Park property in 1974 from Roscoe and Wilma Huff.

**Description** The main attractions in Medina Park includes an enormous hollow sycamore tree and the adventuresome Bean Creek.

**Location** Southwest section, centrally located between the cities of Hudson and Morenci

**Facilities** Picnic areas, ball field, horseshoe pit, playground, and latrine

**Water Sources & Trails** The Bean Creek runs through the park with an open field on one side and woods on the other.

**Capital Plans** Concrete reinforcement for pavilion posts, gravel for parking lot, picnic tables and grills, replace basketball court

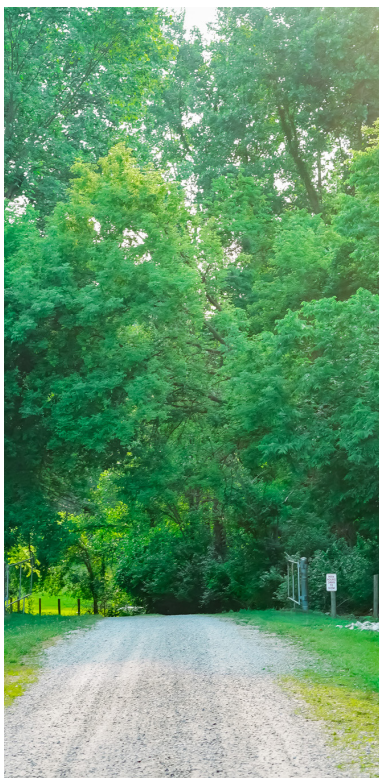
**Accessibility Ranking 3** Most of the park areas meet accessibility guidelines

**DNR Grants** 1976 LWCF (26-00752) Development: Site improvement, play equipment, softball field, parking, pedestrian bridge, shelter, picnic equipment, and LWCF sign

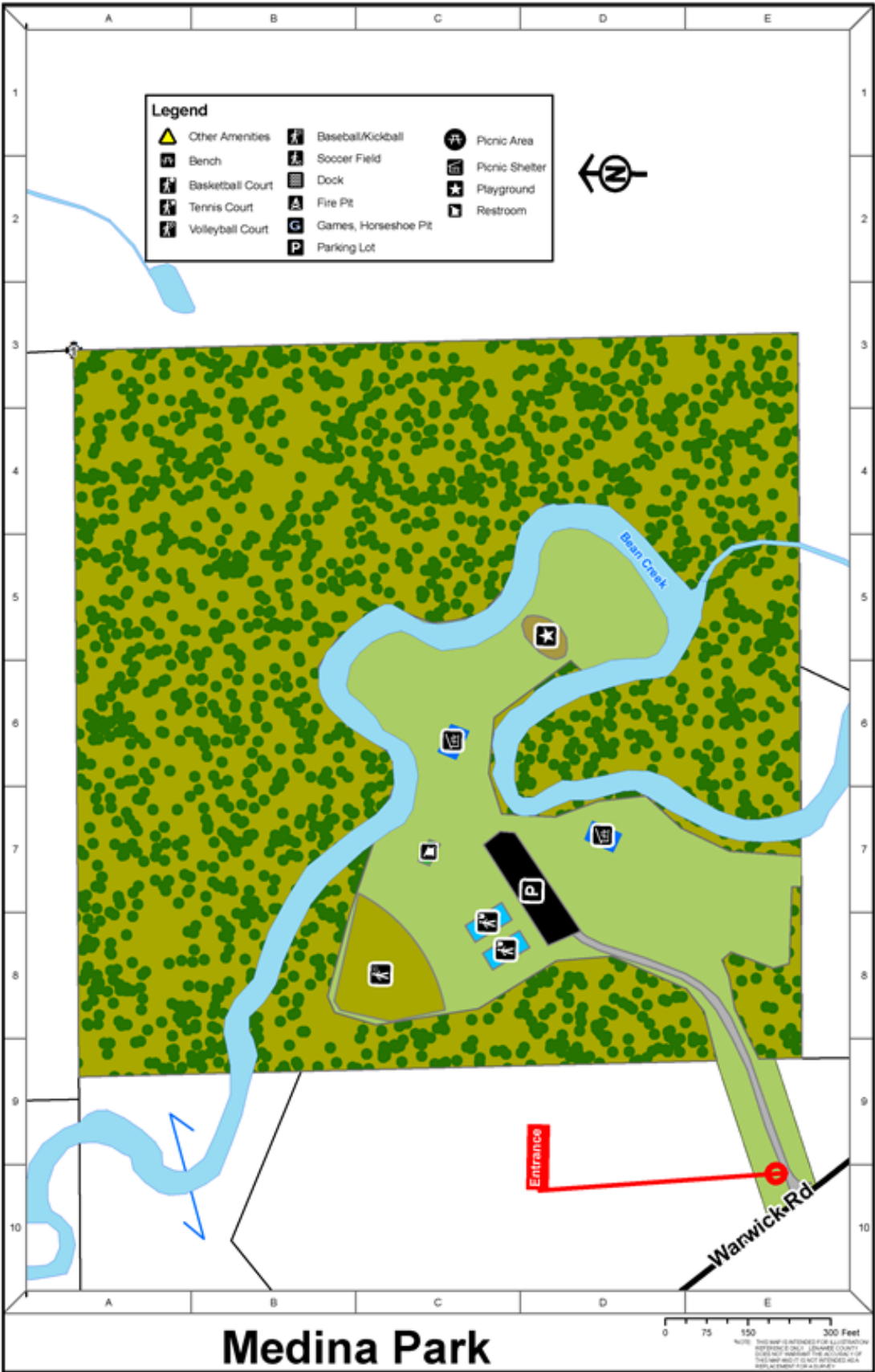
1978 LWCF (26-01060N2) Development: 2 tennis courts; picnic shelter, picnic equipment, LWCF sign

SERVING THE ENTIRE COUNTY, ALL AGES

40 ACRES



MAP #2-8  
MEDINA PARK



# RAMSDELL PARK

**History** Ramsdell Nature Park was bequeathed to the County of Lenawee in 1988 by David R. Ramsdell so that future generations can enjoy the land, the out-of-doors, birds, and nature as he had for so many years.

**Description** Ramsdell Park is a beautiful farm preservation site with a combination of rolling hills, engineered wetlands, ponds, and prairie grass. It is a prime area for hiking and picnics.

**Location** West section, located between Hudson, Manitou Beach, and Adrian

**Facilities** Pavilion with fireplace, grills, tables, and latrine

**Water Sources & Trails** There are two small ponds, one with dock access and the other with primitive access from the trail, and there are approximately 5 miles of maintained trails through both fields and woods

**Capital Plans** Metal roofing for house & garage, metal siding for barn, gravel for the parking lot, playground equipment, establish controlled burn schedule

**Accessibility Ranking 2** Some of the park areas meet accessibility guidelines

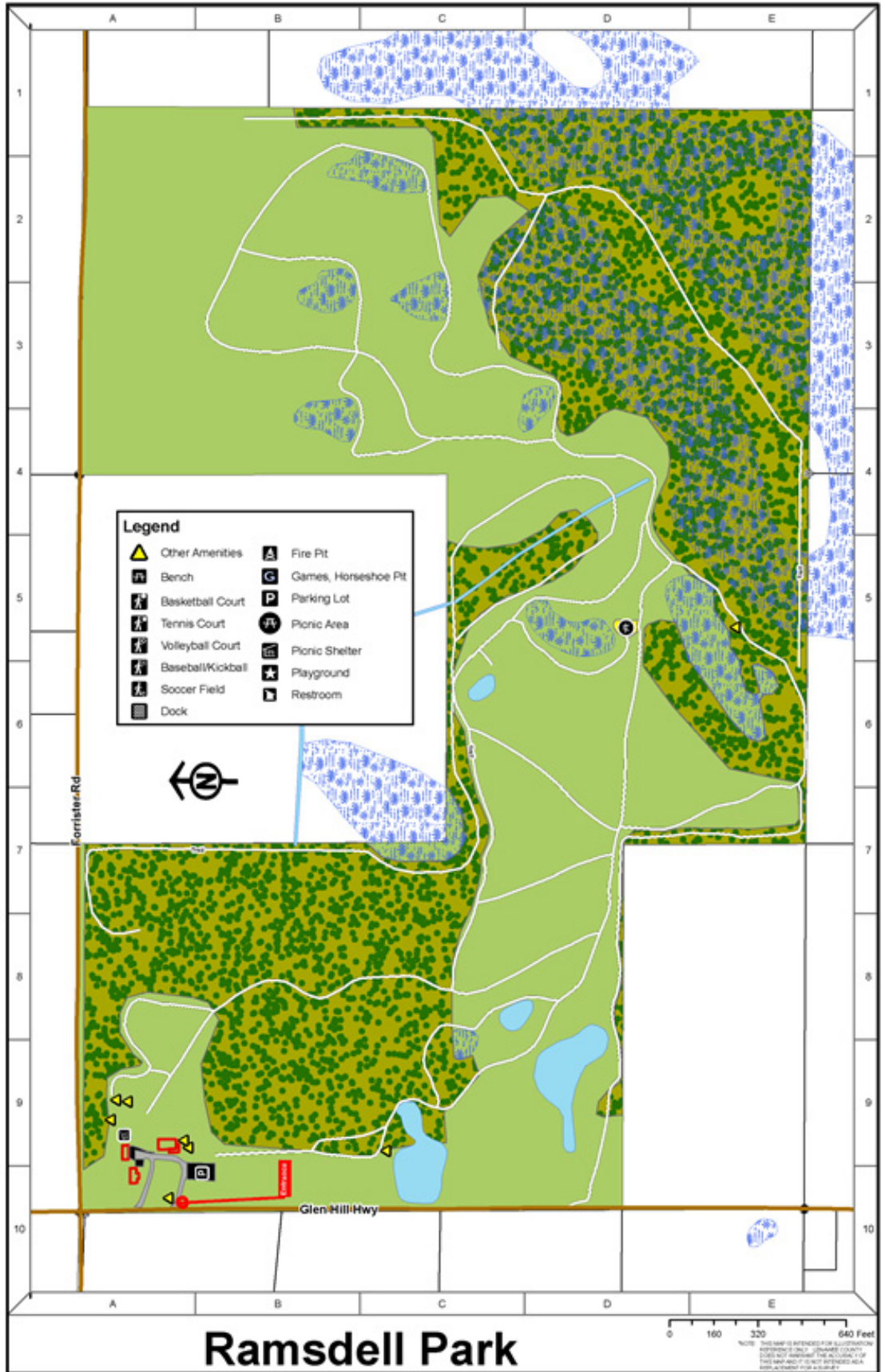
**DNR Grants** 1986 MNRTF (TF86-178) Development: Development will include a passive/solar nature interpretive education center; trail, park drive, parking area, and other support facilities

SERVING THE ENTIRE COUNTY, ALL AGES

180 ACRES |



MAP #2-9  
RAMSDELL PARK



# TAYLOR ROAD PARK

**History** Taylor Road Park was originally owned by the Tecumseh Conservation League and donated to the City of Tecumseh in 1966. It was acquired by the County of Lenawee in 1984 from the City of Tecumseh through a collaborative property exchange.

**Description** Primitive Park with a trail system throughout for hiking and biking, an engineered flood pond for natural habitat designed in cooperation with the DNR and wildlife organizations, tree and plant identification markers, and native plantings in the open oak area.

**Location** The northeast section of the county

**Facilities** No additional facilities

**Water Sources & Trails** There is a small pond with primitive access from the trail and there are approximately 1¼ miles of maintained trails through woods

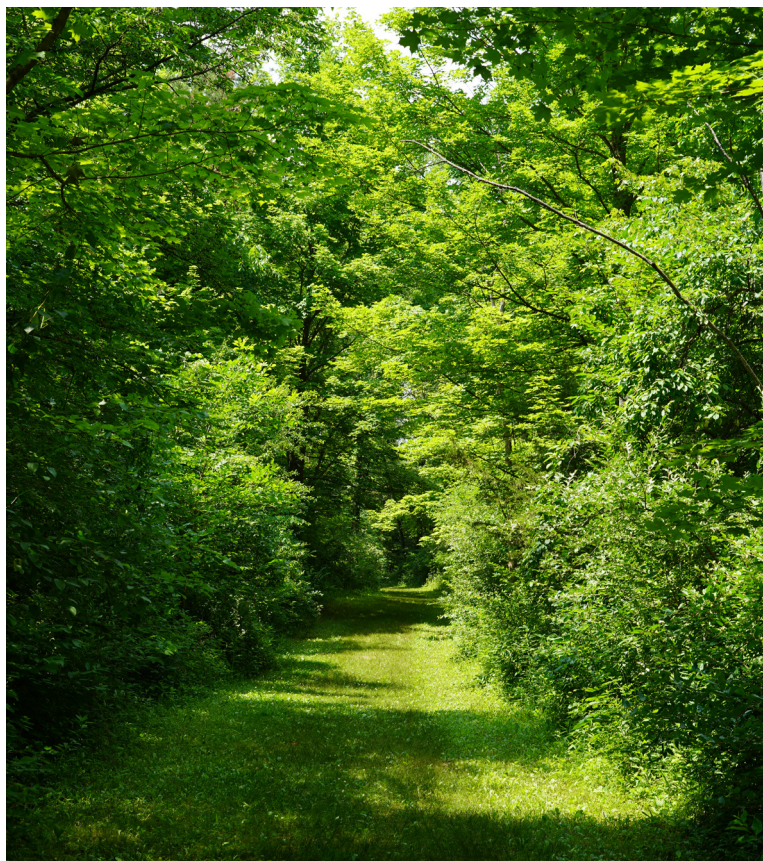
**Capital Plans** Create wildlife viewing areas, add additional trails, and improve trail signage.

**Accessibility Ranking 2** Some of the park areas meet accessibility guidelines

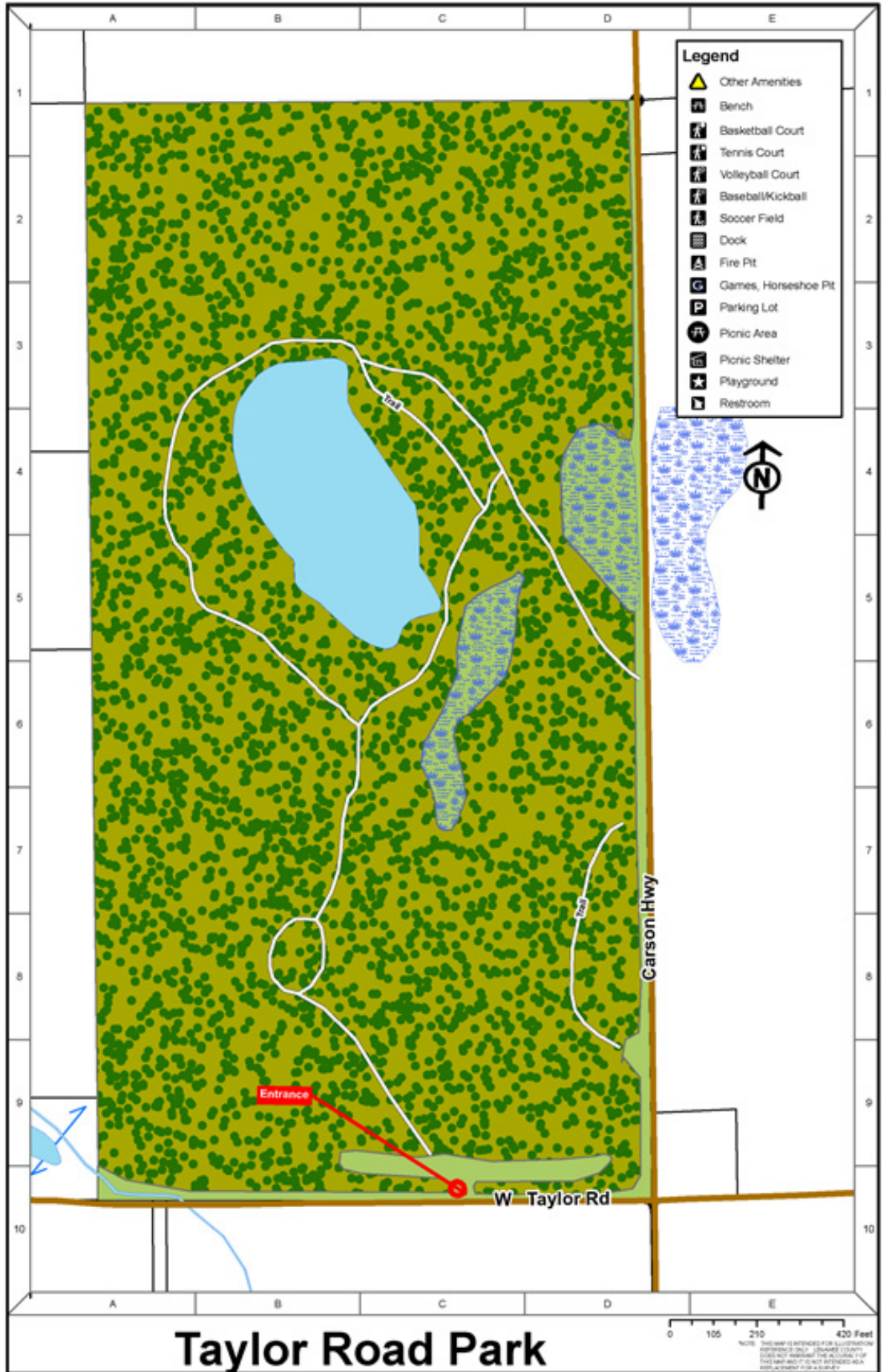
**DNR Grants** n/a

SERVING THE ENTIRE COUNTY, ALL AGES

80 ACRES



MAP #2-10  
TAYLOR ROAD  
PARK





**TABLE #2-2  
INVENTORY  
OF STATE OF  
MICHIGAN PARKS**

*(indicated on  
map #2-2)*

PARK NAME/TYPE	SERVICE AREA	FACILITIES	ACREAGE (if available)
Cambridge Historic State Park	Lenawee County	Full restrooms, Picnic area, visitor center	80
W.J. Hayes State Park	Lenawee & Jackson Counties	185 camp sites, electrical service, picnic areas and shelters, interpretive programs, swimming, concessions/store, boat launch, fishing pier, hiking, mini cabins, tiny houses, modern restrooms, playground, sanitation station, wildlife	654
Lake Hudson State Park	Lenawee County	50 camp sites, electrical service, picnic shelter, hiking, dark sky preserve, vault toilet, boat launch, swimming, hunting, fishing, wildlife	2700



**TABLE #2-3  
INVENTORY OF  
MUNICIPAL PARKS  
& RECREATION  
FACILITIES**

*(indicated on  
maps #2-2, 2-3,  
2-4)*

TYPE/LOCATION	PARK NAME	FACILITIES	ACREAGE (if available)
City of Adrian	Bent Oak Crossing	Shelter, Picnic tables, water, grills, Kiwanis Trail access	.3
	Berry Park	Formal garden, picnic tables, benches	.9
	Burr Bonds Park	Bicycle, walking, benches, picnic shelters, grill and outlets, fishing	11.3
	Cider Mill Park	Picnic tables, River Raisin access, open space	.4
	Comstock Park	Gazebo, grill, benches, floral gardens, Kiwanis Trail access, Millennium sculptures	2.3
	Dana Park	Youth baseball field, play equipment	1.4
	Adrian Dog Park	Open space for dogs	1.4
	Dunlap Park	Playground equipment, picnic shelter, basketball court, open space	1.5
	Fee Park	Gazebo, picnic tables, benches, floral gardens, open space	1.7
	George St. Park (Duck Park)	Picnic tables, River Raisin access, open space, community garden	.3
	Heritage Park	Softball fields, soccer fields, bicycle and walking trails, pickleball court, benches, playground, shelters, picnic tables, grills, hiking trails, sledding hill, disc golf course, electric, open space, restrooms	410.4
	Island Park	Softball field, youth baseball fields, playground equipment, shelters, picnic tables, electric, restrooms, sledding hill, open space	30.5
	Kiwanis Trail	Biking & walking trail	7.5 miles
Library Square	Formal garden, benches	.2	
McFarland Park	Shelter, benches	.3	

(continued)

City of Adrian	<b>Monument Park</b>	Historic site: floral gardens, picnic tables, benches, and several war monuments	1.3
	<b>Parrish Park</b>	Basketball courts, playground equipment, and a picnic shelter	.7
	<b>Piotter Center</b>	Senior citizen center, gym, locker room, cafeteria/kitchen, 6 classrooms	1.4
	<b>Riverside Park</b>	Baseball field, swimming pool, shelters, picnic tables, grills, playground equipment, basketball court, sand volleyball courts, Kiwanis Trail access	23.7
	<b>Riverview Trail</b>	Part of the Kiwanis Trail, benches, river views	.3
	<b>Skate &amp; Bike Park</b>	Half-pipe combo, Bank Hip corner, start box, streetspine, launch box, escalator quarter-pipe and half pyramid	.3
	<b>Trestle Park</b>	Raised board walks, trails, walking paths, picnic shelters, ball field, amphitheater, restrooms, water, Kiwanis Trail access	20.5
	<b>West Park</b>	Benches, open space	1.5
	<b>Yew Park (aka Hospice Park)</b>	Formal garden, benches	.2

<b>TYPE/LOCATION</b>	<b>PARK NAME</b>	<b>FACILITIES</b>	<b>ACREAGE (if available)</b>
City of Hudson	<b>Hudson Trail System</b>	City-wide network of paved non-motorized trails: biking, walking, ADA accessible	4.4 miles
	<b>Community Center</b>	Historic building, Senior Center and Recreation hall available for rent with kitchen facilities and bathrooms	.8
	<b>Thompson Field</b>	Football field, bathrooms, playground areas, little league field	17.3
	<b>Thompson Memorial Park</b>	Soccer/ball fields, restrooms, playground equipment, pavilion, picnic tables, biking or hiking trails	14.3
	<b>Will Carleton Park</b>	Softball field, little league field, 2 tennis courts, basketball court, 3 picnic shelters, 2 playground areas, athletic field, restrooms, 50 picnic tables, 8 grills, nature area	22.3
	<b>Webster Park</b>	Picnic shelter, restrooms, ball field, grills, playground equipment	5

TYPE/LOCATION	PARK NAME	FACILITIES	ACREAGE (if available)
City of Morenci	Riverside Park	Natural park, trail	12.2
	Stephenson Park	Walking trail, basketball court, pickleball court, (2) pavilions, playground equipment, little league field, latrine	1.8
	Wakefield Park	2 tennis/pickleball courts, softball diamond, little league diamond, tee ball diamond, 3 shelter houses, concession stand, restrooms, playground equipment, picnic tables, grills, war memorial, skateboard park, sledding hill, summer youth rec programs, StoryWalk®	11.6

TYPE/LOCATION	PARK NAME	FACILITIES	ACREAGE (if available)
City of Tecumseh	Adams Park	2 picnic tables, restrooms, stage/pavilion, paved parking	1
	Aden Mead Park	1 ball diamond, 1 basketball hoop, benches, drinking fountains, 1 picnic shelter, picnic tables, 1 playground, restrooms (seasonal), 1 soccer field, paved parking	10
	Beardsley Park	Undeveloped green space	8.75
	Cal Zorn Recreation Center	3 ball diamonds, benches, 1 dog park, drinking fountains, grills, 1 picnic shelter, picnic tables, 1 playground, restrooms (seasonal), 5 soccer fields, 1 splash pad, 1 gaga ball pit, Kiwanis Trail trailhead, paved parking	15.4
	Douglas W. Bird Kiwanis Memorial Park	Benches, grills, hiking trails, picnic tables, 1 playground, creek, bridge, street parking	23.7
	Kiwanis Trail	Walking and Biking paved path	4 miles
	Elliott Park	Benches, grills, 1 playground, Scout Cabin, street parking	1.4
	Evans & Monument Park	Fishing access, 1 picnic shelter, picnic tables, gravel parking lot	7.9
	Hotrum Promenade Park	Benches, drinking fountain, 1 gazebo, street parking	.8
	Indian Crossing Trails Park	Benches, fishing access, hiking trails, pond, paved parking	144.6
	John W. Smith Park	AJ Smith Recreation Center, picnic table	23.75
	Satterthwaite Park	1 basketball hoop, benches, 1 dock, fishing access, grills, 1 in-line skate rink, 2 picnic shelters, picnic tables, 1 playground, pond, restrooms (seasonal), 2 tennis courts, livery, 1 skate park, paved parking	8

(continued)

City of Tecumseh	<b>Tecumseh Trails</b>	7 walking/biking trails throughout the city	5.9
	<b>Standish Dam</b>	benches, fishing access, 1 picnic table, pond, river, paved parking	54
	<b>Sunset Street Park</b>	Undeveloped green space	1
	<b>Tecumseh Park</b>	fishing access, grills, 1 picnic shelter, picnic tables, 1 playground, pond, restrooms (seasonal), 2 sand volleyball courts, sledding hill, beach, swimming area, paved parking	24.7
	<b>Tecumseh Center for the Arts</b>	Performance arts theater, Street Art Trail, MaryJo Mensing Sculpture Garden, TCA Music Park	n/a

TYPE/LOCATION	PARK NAME	FACILITIES	ACREAGE (if available)
Village of Addison	<b>Bowens Park</b>	Community Park	7
	<b>Smith Park</b>	Community Park	2
	<b>Water Works Park</b>	Community Park	11.5

TYPE/LOCATION	PARK NAME	FACILITIES	ACREAGE (if available)
Village of Blissfield	<b>Aquatic Center</b>	Outdoor water facilities: 6 lane lap pool with slide and diving board, wading pool with zero entry, splash pad and exercise pool.	7.2
	<b>Blissfield Middle School</b>	Tennis & Pickleball courts	n/a
	<b>Bachmayer Little League/Playground</b>	Baseball fields, picnic shelter, boundless ADA playground	4.4
	<b>Clara Bachmayer Park</b>	Picnic shelters, playground, benches, ADA pedestrian trail now linking arch bridge and Ricker Shelter	6.9
	<b>Ellis Park</b>	Playground, picnic shelters, baseball field, softball field, shuffleboard, volleyball, basketball, skateboard park, boat launch, dog park and benches.	17.5
	<b>O.W. Farver Little League</b>	Baseball Field	4.7
	<b>O'Mara Park</b>	Benches, picnic facilities, gardens, clock.	.5

TYPE/LOCATION	PARK NAME	FACILITIES	ACREAGE (if available)
Village of Clinton	Tate Park	Quad plex softball complex with concessions, paved trails with benches, fishing dock, three picnic shelters, gazebo, soccer fields, canoe livery, playground equipment, a seven acre island with nature trails	80
	Village Square	Pavilion, basketball court	n/a
	Veterans Park	Historical monument and open space	n/a
	Water Works Park	Picnic area, river access, fishing, scout cabin	1
	Community Center	Basketball courts	2

TYPE/LOCATION	PARK NAME	FACILITIES	ACREAGE (if available)
Village of Clayton	Village Square	Pavilion, basketball court	n/a

TYPE/LOCATION	PARK NAME	FACILITIES	ACREAGE (if available)
Village of Cement City	Cement City Park	Pavilion, basketball court, play structure, swings, little library, port-a-john	1 block
	Historical Museum	ADA accessible, open year-round	n/a

TYPE/LOCATION	PARK NAME	FACILITIES	ACREAGE (if available)
Village of Deerfield	Deerfield Village Park & Splash Pad	Picnic shelter, splash pad, grills/outlets, sand volleyball court, tennis court, basketball court, playground equipment, restrooms, paved parking	1

TYPE/LOCATION	PARK NAME	FACILITIES	ACREAGE (if available)
Village of Onsted	Onsted Festival Park	Swings, play equipment, 6 baseball diamonds, 2 pavilions with electricity, restroom, soccer field, stage, benches, shuffleboard court	20

TYPE/LOCATION	PARK NAME	FACILITIES	ACREAGE (if available)
Adrian Township	Waid Park	Picnic shelter	.3

TYPE/LOCATION	PARK NAME	FACILITIES	ACREAGE (if available)
Fairfield Township	Fairfield Park	Basketball, swings, teeter totters	1

TYPE/LOCATION	PARK NAME	FACILITIES	ACREAGE (if available)
Franklin Township	Franklin Township Park	Tennis courts, basketball court	1

TYPE/LOCATION	PARK NAME	FACILITIES	ACREAGE (if available)
Macon Township	Macon Town Hall	Playground equipment	.5

TYPE/LOCATION	PARK NAME	FACILITIES	ACREAGE (if available)
Raisin Township	Mitchell Park	Soccer fields, ball diamonds, pavilions, merry-go-rounds, swing sets, slides, climber, playground equipment, tennis court	38

TYPE/LOCATION	PARK NAME	FACILITIES	ACREAGE (if available)
Riga Township	Riga Township Park	Baseball diamonds, soccer nets, playground equipment, paved walking path, picnic shelter, accessible port-a-john	5

TYPE/LOCATION	PARK NAME	FACILITIES	ACREAGE (if available)
Rollin Township	Jack Tibbs Memorial	Baseball diamond, playground equipment, picnic shelter, open spaces	7.4

NAME	LOCATION	FACILITIES	ACREAGE (if available)
Addison High & Middle	Addison	Neighborhood playground, community playfield	n/a
Siena Heights University	Adrian	6 tennis courts, 1 baseball field, 2 soccer fields, indoor multi-purpose facility	140
Adrian College	Adrian	Library, planetarium, softball field, ice arena, tennis complex, football stadium, gaming room, fitness center, baseball field, track & field complex	132
LISD Tech Center	Adrian	Large gathering rooms	n/a
Adrian High	Adrian	Football field, running track, 1 baseball field, 6 tennis courts, indoor pool	50.6
Adrian Community Education Center	Adrian	n/a	n/a
Adrian Head Start	Adrian	n/a	n/a
Springbrook Middle	Adrian	n/a	n/a
Alexander Elementary	Adrian	1 baseball field, 1 softball field, 1 basketball court, play equipment	4

 **TABLE #2-4  
INVENTORY  
OF SCHOOL  
RECREATION  
FACILITIES**

(indicated on maps #2-2, 2-3, 2-4)

(continued)

<b>Lincoln Elementary</b>	Adrian	Basketball court, play equipment	2
<b>Michener Elementary</b>	Adrian	1 softball field (lighted), 3 soccer fields, play equipment	16.5
<b>Prairie Elementary</b>	Adrian	Play equipment	7.4
<b>Berean Baptist Academy</b>	Adrian	Play equipment	n/a
<b>Lenawee Christian School &amp; The Centre</b>	Adrian	1 full-size gymnasium & a mini gym, Olympic-Sized swimming pool with 60 ft long slide and 12 ft climbing walls, 700 seat auditorium with high-definition projector and concert-grade sound system, Kid's Care room complete with mini-playground, Wii, and great activity areas, 2 softball fields, 1 baseball field, 2 sand volleyball courts, combination soccer/football field with rubberized track, fitness areas, cycling studio, several rental rooms for parties up to 350, 2 practice soccer/football fields, 9 hole disc golf course, 3 playgrounds, grand pavilion with capacity for 240+ and 3 smaller pavilions, 1/2 mile paved walking trail, 1/4 mile wooded trail, water park	75
<b>St. John's Lutheran</b>	Adrian	Gym, play equipment	n/a
<b>St. Mary's Activity Center</b>	Adrian	n/a	n/a
<b>St. Stephen Lutheran</b>	Adrian	2 softball fields, play equipment	5.6
<b>Benedict Memorial</b>	Adrian Township	n/a	n/a
<b>Center for Sustainable Future</b>	Adrian Township	n/a	75
<b>Blissfield High</b>	Blissfield	Football field, baseball field, soccer field, track, exercise course	70
<b>Blissfield Middle</b>	Blissfield	(associated w/ high school complex) tennis courts	1.7
<b>Blissfield Elementary</b>	Blissfield	(associated w/ high school complex)	2
<b>Clinton Community</b>	Clinton	Football field, track, 2 baseball fields, 1 softball field, practice football and softball field, practice soccer field, gym	n/a
<b>Britton Deerfield Schools</b>	Britton & Deerfield	Softball diamonds, basketball, playground equipment, gym, football field, latrine	n/a
<b>Hudson Middle &amp; High</b>	Hudson	Softball field, baseball field, gym, multi-purpose room	n/a
<b>Lincoln Elementary</b>	Hudson	Playground equipment	n/a
<b>Sacred Heart</b>	Hudson	Playground area, parking lot, gym	n/a

(continued)

<b>Madison Community</b>	Madison Township	2 baseball fields, football field, running track, soccer field, gym, play equipment, picnic shelter, 2 sand volleyball courts	10.2
<b>Morenci High</b>	Morenci	Baseball field, soccer field, football field, track, gymnasium, basketball courts	n/a
<b>Morenci Middle</b>	Morenci	Gym, basketball courts	n/a
<b>Morenci Elementary</b>	Morenci	Gym, basketball courts, playground, ga-ga ball	n/a
<b>Onsted Community</b>	Onsted	Two baseball diamonds, football field, track, gym, basketball court, soccer field	n/a
<b>Porter Center</b>	Raisin Township	Conference, gymnasium	n/a
<b>Manitou Road Baptist Church &amp; Academy</b>	Rollin Township	Swing set	n/a
<b>Sand Creek Community</b>	Sand Creek	Baseball diamond, football field, softball diamond, soccer field, track, gym	n/a
<b>Tecumseh High</b>	Tecumseh	Baseball diamonds, football/soccer fields, bathrooms, indoor pool, jogging track, parking	26
<b>Herrick Park Elementary</b>	Tecumseh	Swings, slides, basketball hoops, ball fields, wood climbers, parking	10.1
<b>Tecumseh Acres Elementary</b>	Tecumseh	Ball fields, swings, ladder, play structure	10
<b>St. Elizabeth Catholic Church</b>	Tecumseh	Slide, swings, merry-go-rounds, see-saws, basketball hoop	1
<b>Stone Ridge Christian</b>	Tecumseh	n/a	n/a

  
**TABLE #2-5  
 INVENTORY  
 OF OTHER  
 RECREATION  
 FACILITIES**

(indicated on maps #2-2, 2-3, 2-4)

<b>TYPE</b>	<b>NAME</b>	<b>LOCATION</b>	<b>FACILITIES</b>
Senior Centers	<b>Addison Senior Center</b>	Addison	Senior citizen-oriented activities
	<b>Adrian Senior Center</b>	Adrian	Senior citizen-oriented activities
	<b>Blissfield Senior Center</b>	Blissfield	Senior citizen-oriented activities
	<b>Hudson Senior Center</b>	Hudson	Senior citizen-oriented activities
	<b>Morenci Senior Center</b>	Morenci	Senior citizen-oriented activities
	<b>Onsted Senior Center</b>	Onsted	Senior citizen-oriented activities
	<b>Tecumseh Senior Center</b>	Tecumseh	Senior citizen-oriented activities

TYPE	NAME	LOCATION	FACILITIES
Orchards	Carpenter Farms	Adrian Township	Seasonal produce and entertainment
	Applewood Orchards Inc	Deerfield	Fruit production, processing
	Hanover Orchard	Deerfield	Fruit production, processing
	Marvin's Fairfield	Fairfield Township	Fruit production, seasonal entertainment
	Keeney Orchard	Madison Township	Fruit picking
	Hide Away Orchard	Madison Township	Fruit production
	Kapnick Orchards	Raisin Township	Fruit production, seasonal entertainment
	St. Nick's Orchard	Woodstock Township	Fruit production

TYPE	NAME	LOCATION	FACILITIES
Museums	Lenawee County Historical Museum	Adrian	Historic museum and archives for photos and documents (originally a Carnegie Library)
	Walker Tavern	Brooklyn	Historical museum
	Hudson Museum	Hudson	Library, museum
	William G. Thompson House & Gardens	Hudson	Historic site, antiques, art collections, gardens
	Southern Michigan Railroad Society Museum	Clinton	Historical museum
	Tecumseh Area Museum	Tecumseh	Historical museum

TYPE	NAME	LOCATION	FACILITIES
Campgrounds	Sequoia Campground	Adrian Township	Over 100 camp sites, electric & water hookups, pool, showers, flush toilets, playground, softball diamond, ½ basketball court, volleyball, horse shoe pits, fishing, dog run, store, dump station, chapel
	Green Valley Campground LLC	Morenci	Over 300 sites, clubhouse, fireplace, shelter house, hook ups and dump station, playground, beach
	Devils Lake Campground	Woodstock Township	50 seasonal campsites, bathroom/shower facilities, sewer, boating, electrical, water hookups
	Irish Hills Campground	Cambridge Township	Over 100 camp sites, pool, store, bathroom/shower facilities, electrical and water hookups, playground

(continued)

Campgrounds	<b>Indian Creek Camp &amp; Conference Center</b>	Tecumseh	Over 50 sites, pavilion, shower house, rustic cabins, pool
	<b>JaDo Campground</b>	Tipton	WiFi, store, fishing playground, water/electricity, showers, dump station
	<b>Juniper Hills Campground</b>	Woodstock Township	Over 100 camp sites, swimming, store, bathroom/shower facilities, electrical and water hookups, playground
	<b>Paradise Campground</b>	Woodstock Township	105 seasonal campsites, playground, recreation building, water and electric hookups, shower/restroom facilities
	<b>Sauk Valley</b>	Woodstock Township	Cabins, lake access, shower/electric facilities, fishing
	<b>Bernie's Cedar Haven</b>	Woodstock Township	Over 20 campsites, overnight camping, cabins, store, water and electric hookups

TYPE	NAME	LOCATION	FACILITIES
Libraries	Lenawee District Library	Addison	
		Adrian	
		Britton	
		Clayton	
		Deerfield	Roberts-Ingold Memorial Library
		Onsted	
		County-wide	Bookmobile
	<b>Adrian District Library</b>	Adrian	
	<b>Schultz-Holmes Memorial Library</b>	Blissfield	
	<b>Hudson Carnegie Public Library</b>	Hudson	
	<b>Stair District Library</b>	Morenci	
	<b>Tecumseh District Library</b>	Tecumseh	

TYPE	NAME	LOCATION	FACILITIES
Livery	<b>Tate Park</b>	Clinton	Conoe livery
	<b>Tecumseh Paddling Company</b>	Tecumseh	Kayak, paddle boarding

TYPE	NAME	LOCATION	FACILITIES
Private (Miscellaneous)	Addison Bowling Lanes	Addison	Bowling
	Adrian & Blissfield Railroad Company	Adrian/ Blissfield	Railroad, amusement
	Adrian Skatery	Adrian Township	Roller skating
	Adrian Cinemas	Adrian Township	10 screen movie theatre
	Croswell Opera House	Adrian	Live theatre, historic structure, mini-park bench table, gallery
	Lenawee Recreation	Adrian	Bowling - 24 lanes, pro shop, dining
	Lenawee County Fairgrounds <i>(not-for-profit association)</i>	Adrian	Exhibit hall, race track, grandstands, horse stalls, concessions, restrooms, rental halls
	Blissfield Dinner Train	Blissfield	Railroad, amusement
	Blissfield Model Railroad	Blissfield	Model railroad displays
	Raisin Valley Model Railroad	Blissfield	Model railroad displays
	Rich Lanes	Blissfield	Bowling
	Michigan International Speedway	Cambridge Township	Automobile racing, camping, concessions Special events: concerts, festivals, competitions
	Mystery Hill	Cambridge Township	Amusement
	Clinton Theater	Clinton	Movie theater
	Southern Michigan Railroad	Clinton	Railroad, amusement
	Port-to-Port Adventures	Franklin Township	Putt-putt golf, batting cages, arcade
	MSU - Hidden Lake Gardens	Franklin Township	Arboretum, picnicking, hiking trails, scenic drives, educational classes, Sky Canopy Walk
	Hudson Cinema	Hudson	2 screen movie theater
	Hudson Bowling Lanes	Hudson	Bowling - 10 Lanes
	Rex Theater	Morenci	Movie Theater
	Mor-N-C Lanes	Morenci	Bowling
	Village Greens	Onsted	Miniature Golf
	Stone Moutain Putt Putt	Tecumseh	Miniature Golf
	Ten Pin Alley	Tecumseh	Bowling
Southern Michigan Railroad	n/a	Scenic Railroad: Clinton, Tecumseh, Raisin Center	

TYPE	NAME	LOCATION	FACILITIES
Golf Courses	Lenawee Country Club	Adrian	18 holes, driving range, 2 tennis courts, pool
	Wolf Creek	Adrian Township	18 holes, driving range
	Mission Pointe	Adrian Township	18 holes
	Evergreen	Hudson	18 holes
	Woodlawn	Madison Township	18 holes
	Elliot's Golf Center	Madison Township	Driving range, putt-putt golf
	Irish Hills	Onsed	9 holes
	Raisin Valley	Raisin Township	18 holes
	Tecumseh Country Club	Tecumseh	18 holes
	Shank's Driving Range	Tipton	Driving range
	Silver Lake	Woodstock Township	9 holes
	Devils Lake	Woodstock Township	18 holes

TYPE	NAME	LOCATION	ACRES
Public Boat Access	Allen Lake	Cambridge Township	63
	Deep Lake	Cambridge Township	65
	Devils Lake	Rollin Township	1330
	Hudson Lake	Hudson Township	502
	Iron Lake	Cambridge Township	78
	Onemile Lake	Woodstock Township	29
	Round Lake	Rollin Township	515
	Sand Lake	Cambridge Township	440
	Wamplers Lake	Cambridge Township	780
	Wolf Lake	Cambridge Township	69



TABLE #2-6  
GRANT HISTORY

GRANT NUMBER	APPLICATION YEAR	PROJECT DESCRIPTION	GRANT AMOUNT
26-00752	1976	Medina Park - Site improvement, play equipment, softball field, parking, pedestrian bridge, shelter, picnic equipment, LWCF sign	\$15,115
26-01023 A1	1977	Bicentennial Woods- Acquire 78 acres for outdoor recreation	\$31,730
26-01060N2	1978	Medina Park- (2) tennis courts, picnic shelter, picnic equipment, LWCF sign	\$19,103
26-01104E	1980	Bicentennial Woods- Entrance road, parking, grading & seeding, picnic shelter LWCF sign	\$25,142
BF89-532	1989	Walking trails to include woodlot, wetland, native tall grass prairie, & education purposes	\$66,000
TF10-102	2010	Gerber Hill Park- Shelter & educational facilities, signs for hill & parking lot, fencing & gate, MNRTF sign	\$69,000
TF86-178	1986	Ramsdell Nature Park- Passive/solar nature interpretive center, trail, drive, parking lot, support facilities	\$163,000
TF17-0140	2018	Kiwanis Trail- extend the current trail to Tecumseh, MI	\$300,000



## Why It Matters

Public input is vital to ensuring our parks reflect community needs and lead to informed decisions that create sustainable, beloved spaces for everyone

# PUBLIC INPUT

Guided by your voice, we're crafting the future of Lenawee County's Parks



## DESCRIPTION OF THE PLANNING PROCESS

The development of this edition of the Lenawee County Parks and Recreation Plan included the following steps:

- Lenawee County recognized the need to update the Lenawee County Parks and Recreation Plan.
- The County’s Administrator contracted with Region 2 Planning Commission (R2PC) staff to assist in and facilitate the development of the 2025-2029 edition of the Plan in the summer of 2024.
- The County’s Parks Commission conducted an online public opinion survey during May and June 2024.
- Region 2 Planning Commission revised the Introduction and Appendix.
- The County Administrator’s Office

updated the Recreation Inventory, Public Input Process, and Implementation chapters of the Plan.

- The Parks Commission developed new actions, objectives, and goals based on the results of the Public Input Process.
- The Parks Commission provided the plan for public review from October 20, 2024 through November 20, 2024, and recommended the plan to the Lenawee County Board of Commissioners which held a public hearing on the plan on December 11, 2024.
- The County Board of Commissioners adopted the new edition of the Lenawee County Parks and Recreation Plan on December 11, 2024.

## DESCRIPTION OF THE PUBLIC INPUT PROCESS

Public input was gathered by two methods – an online (i.e., internet-based) Lenawee County Parks survey and a public hearing.


The Lenawee County Parks Commission conducted an online public opinion survey which was placed on the county website (lenawee.mi.us) from May 8, 2024, through June 8, 2024. Various advertising methods were used including a pop-up on the County website, a paper flyer with QR code, a Newsflash, social media posts, and several sections in our weekly 60-second email update. Every municipality was emailed a paper flyer with a QR code and requested to advertise.

The results of these efforts are presented in this section. The total responses increased by 180% over the last survey done, with 512 total responses. Average completion time for the online survey was 3 minutes.



As we draft our next five-year Parks Plan, your feedback is essential. Take a moment to fill out our Parks Survey and have a say in the future of our local parks! Your input will help us understand community needs and ensure our parks remain a cherished part of our neighborhood.

### Take the Survey



**Help Us Spread the Word**

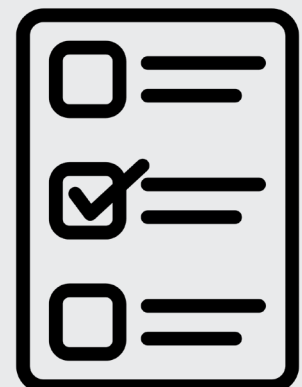
Download our printable Parks Survey flyer and display on your bulletin boards, windows, or doors so all members of the community are informed and have the opportunity to voice their opinions. Your participation and advocacy can truly make a difference!

[Download and Print the Flyer](#)



Lenawee County  
May 17

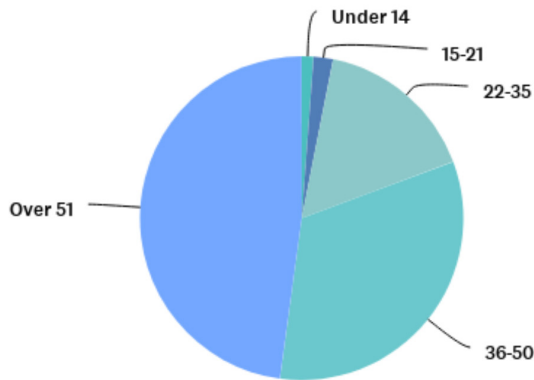
We're planning the future of our parks and need your voice! Share your thoughts in our brief survey to make our parks better for everyone. Your feedback is vital!  
https://bit.ly/4buPjjs #ParksPlan2025 #CommunitySurvey



The survey covered a wide range of questions regarding county park usage, level of satisfaction with parks, suggested/needed park facility improvements, and general comments. Demographic information was also requested to ascertain the response’s validity and cross-tabulate them to the demographic sector.

The survey opened with a series of demographic questions. First, respondents were asked to indicate their age bracket and the age brackets of others living in their household. This was preferable to asking for the specific age of the respondents which is both too personal and beyond the needs of the survey.

**GRAPH #3-1  
AGE BRACKET**



**Location:**

Respondents were asked to provide their residential zip code. 50.00% of the 512 respondents lived in the **Adrian** (49221) area, 11.33% lived in **Tecumseh** (49286) and 10.55% lived in **Clinton** (49236).

Of the remaining zip codes, most lie completely or partially within Lenawee County:

**AGE BRACKET**

**1 Respondents were asked to specify their age group; 512 responses received**

- 47.85% were 51+
- 32.81% were 36-50
- 16.21% were 22-35%
- 1.95% was 15-21
- 1.17% was under 14

**2 Of the 512 responses received, age brackets within a household were identified:**

41.02% of households had one or more members at least 65 years old | 15.63% had one member, 16.60% had two members, 3.71% had three members, and 5.08% had four or more members over 65 years.

80.07% of households had at least one member between the ages of 18-64 — 17.58% had one member, 44.14% had two members, 10.35% had three members, 5.27% had four members, and 2.73% had more than four members between 18 and 64 years.

40.44% of households had at least one person under the age of eighteen — 13.28% had one member; 16.8% had two members, 8.01% had three members, 1.37% had four members, and 0.98% had more than four members under the age of 18.

Zip Code	Municipality	Percentage	Zip Code	Municipality	Percentage
49287	Tipton	1.56%	49229	Britton	2.93%
49235	Clayton	1.37%	49247	Hudson	3.91%
49265	Onsted	2.54%	49253	Manitou Beach	2.73%
49220	Addison	.59%	49233	Cement City	.59%
49230	Brooklyn	.78%	49238	Deerfield	0%
49248	Jasper	.98%	49279	Sand Creek	.78%
49256	Morenci	4.49%	49276	Riga	.2%
49228	Blissfield	3.13%	49268	Palmyra	.98%

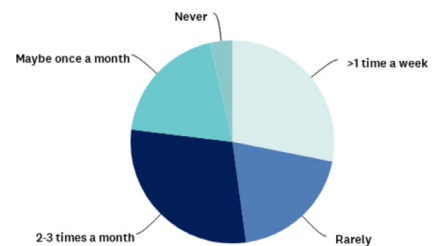
# 51.2%

## WERE FAMILIAR WITH AT LEAST ONE OF OUR COUNTY PARKS

### Visiting a Park

Respondents were asked how often they visit a public park. Only 3.5% of 512 respondents never visited a public park, 19.7% visited 'rarely', and 19.5% visit 'maybe once a month'. However, 29% visited '2-3 times a month' and 28% visited a park 'more than once a week'.

**GRAPH #3-2**  
PUBLIC PARK VISITS

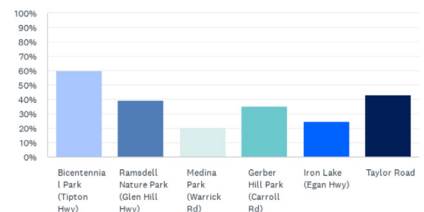


### County Park Familiarity

Respondents were asked if they were familiar with Bicentennial, Medina, Ramsdell, Gerber Hill, Iron Lake, and/or Taylor Road County Parks. Of the 482 respondents, 51.24% were familiar with at least one of the parks.

Respondents were also asked about the last time they visited one of those parks — 28.84% of the 482 respondents have visited a Lenawee County Park between 2022-2024, 11.83% visited between 2 and 5 years ago, 14.73% stated 'a long time ago' and 44.61 stated 'I have never visited one of these parks'.

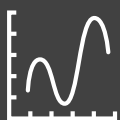
**GRAPH #3-3**  
PARK PARTICIPATION



Respondents were also asked to identify each park they have visited. Of the 130 respondents:

- 60.0% had visited Bicentennial Park
- 43.1% had visited Taylor Road Park
- 39.2% had visited Ramsdell Nature Park
- 35.4% have visited Gerber Hill Park
- 24.6% had visited Iron Lake
- 20.8% had visited Medina Park

Respondents were also asked if they enjoyed the park they visited. 97.7% of the 130 respondents answered 'Yes'.



### BICENTENNIAL PARK IS OUR MOST POPULAR PARK

60% of respondents had visited Bicentennial Park

### OUR PARKS REMAIN VERY ENJOYABLE TO THOSE THAT VISIT

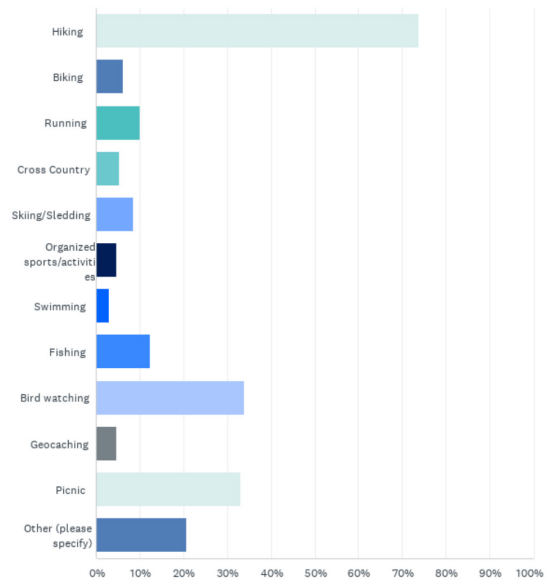
Almost 98% say that they enjoyed the park they visited

## Park Activities

Respondents were asked what types of activities they participated in while visiting the parks; 130 responses were received. The top five reasons a Lenawee County Park was visited include:

- 96 - Hiking
- 44 - Bird watching
- 43 - Picnic
- 16 - Fishing
- 13 - Running
- 6 - Organized sport

GRAPH #3-4  
PARK  
ACTIVITIES



Twenty-seven other responses mostly included walking or dog walking.

Respondents were asked if they would return to a County park within the next year: 469 responses were received;

58.85% = "Yes"

36.67% = "Maybe"

Only 4.48% = "No"

When asked what factors might entice them into visiting a county park, 154 of 382 respondents indicated organized events, 144 indicated updated playground equipment, 67 stated better parking.

189 other responses were received; top commentary includes: Adult exercise equipment, mountain biking trails, more benches, courts for kids to play, nice picnic areas, historical events/stories, good lighting, groomed trails, dog park, water feature, wheelchair swing, enhanced playground equipment, fenced dog area, safety, gardens, and preserve nature.

Organized events will entice our residents to visit our parks more

nature bathroom facilities use Bike trails events Improved hiking trails swimming

Nice picnic areas walking picnic better bathrooms trails

Walking paths park Restrooms walking trails Water

Clean hiking area know Safe Nothing dog park kids equipment paths dog trail systems play

Respondents were asked what types of activities they would participate in if they were available at Lenawee County Parks. 72% of the responses were for Bicentennial Park. Suggested activities included:

Activities listed	Bicentennial	Medina	Ramsdell	Gerber Hill	Taylor Rd	Iron Lake
Trails: Hike/Walk/Run/Biking	17	13	16	8	17	7
Fishing	-	1	-	-	-	3
Tennis/Pickleball	4	2	1	1	-	-
Concert/Music/Festival	3	-	2	1	-	1
Splashpad/Swimming/Kayaking/Boating	4	1	1	1	2	6
Cookout/Picnic	4	1	1	2	1	-
Sports event (cross-country, volleyball, soccer etc)	5	1	-	2	2	-
5K/Awareness Events	1	1	1	1	1	1
Dog Park	4	1	1	1	3	1
Bird watching/Nature observation	4	1	2	2	1	2
Education/History	-	1	3	4	1	2
Miscellaneous items	5	6	5	4	4	4
Stargazing/Night Park	2	-	-	1	-	1



## CLUBS AND ORGANIZATION AFFILIATIONS

Respondents were asked if they are affiliated with a club or organization that may be interested in using, or has used, a county park and 35 responded “Yes” and listed the following clubs: Chess club, River Raisin Watershed Council, Kiwanis, Adrian Street Cruisers, Pokemon Go, Sand Creek Little League, YMCA, Lenawee County Young Marines, LUFC Soccer Club, Girl Scouts, Firefighting training, LCMHA, Church group, Garden club, Exercise group, and Lenawee County Retired School Personnel

### WHEN ASKED WHAT PARK NEEDS IMPROVEMENTS, A TOTAL OF 51 RESPONSES WERE GIVEN, 52% WERE FOR BICENTENNIAL PARK

**Bicentennial:** Trail maintenance, gravel drive, burn prairie, benches, trail signage, playground, soccer field, maintain clear trail, bathroom, additional open hours, invasive control/native planting

**Medina:** Adult exercise equipment, picnic shelter, new playground equipment, update facilities, additional open hours, mapped trails, invasive control/native planting

**Ramsdell:** Insect control, improved trails, new playground equipment, brush management, trail map/ marked trails, wheelchair accessible, invasive control/native planting

**Gerber:** Playground equipment, repair parking lot, updated restrooms, more benches, brush management, invasive species removal

**Iron Lake:** Hard surface launch, trail around lake, new playground equipment, organize parking areas, wheelchair accessible, trash can, port-a-john, invasive control/native planting, truck/trailer (boat) parking

**Taylor Road:** Make benches “memorial benches”, trap shooting, update/increase parking lot, new playground equipment, invasive control/native planting, brush management



# Funding Suggestions

Respondents were asked to provide their suggestions to help fund park project. 101 responses were received:

- Donate to run events
- Donation boxes/signs on how to donate
- Volunteer workdays
- Pay to camp events
- Fundraisers for specific project(s)
- Craft/Vendor Shows/Farmers Markets
- Adopt-a-park
- Sponsors
- More publicity
- Movie in the park
- Online Auctions
- Adult exercise equipment: Murph or Crossfit competitions
- Can drives
- 5K/Fun run
- QR for donations
- Modest millage
- Partner with humane society / dog adoption events
- Boy/Girl Scout Educational activities
- Art in the Park fundraisers
- Soccer field; charge for use

## Other Comments Received by the Public

The survey concluded by soliciting additional comments. 77 people responded, there were many good suggestions, with only a couple of non-relative responses.

“Less mowing at Ramsdell, takes away from natural setting. No more new paths, it’s a nature park. Do controlled burns to manage invasive plants and insects, instead of mowing.”

“Adding adult exercise equipment will give parents something to do while kids play.”

“Need more dog parks.”

“Better bathrooms”

“Activities focused on family or young children”

“Increased marketing/awareness”

“Donation box”

“Increased hours”

“Parks are lovely places to enjoy nature”

“Community involvement with land preservation and education; when one see’s the delicate balance of nature, a system that we are part of, we come to appreciate the whole.”



“Continue to maintain parks - they are treasures”



“More pickleball courts”



“Safe playgrounds for young kids, one that is accessible to all needs”



“Restoration of wetlands and waterways with help from EGLE”

# Comments

(continued)

"I think it could be humbling and thought provoking to have a park dedicated to the night sky. Not only an area to set up telescopes, but have an exhibit with telescope on site. Planewave might be interested in sponsoring a park!"

"Suggest updating with photos of the park and not just the signs at the park and amenities at each park. Bathrooms; play equipment, trails, ponds, etc. "

"More rides/swings for handicap riders"

"If Park upkeep exceeds revenue, suggest you begin selling park property and downsize"

"ADA-accessible playground; word board for non-verbal can communicate"

"Venue for home and traveling youth soccer/ baseball teams"

"City of Adrian has nice parks but too many for them to keep up well, Trestle Park is a good example of this. I don't want the County to fall into the same trap."

"I would mow for free and I'm insured also"

"More awareness of these parks in general as well as their season/times of operation would be helpful"

"Anything at all, other than just trails and fields."

"Make sidewalks handicap accessible"

"Dog parks"

"Inclusive playgrounds would be a huge draw to any park"

"Lenawee Pheasants Forever habitat chair - how can I help?"

"Anything other than trails and fields"

"Summer "Passport" project; get a local running/parenting/health group onboard. Combine social media photos/hashtags with illustrations of what each park has to offer."

"Parks are lovely places to enjoy nature"

"Willing to help with special projects"

## PUBLIC HEARING

Under the Michigan Department of Natural Resources guidelines, a public hearing was held to gather additional public input for this plan. To publicize the public hearing, an advertisement was placed in The Daily Telegram, the local countywide newspaper, and the public meeting was posted in accordance with the Open Meetings Act.

After the completion of the 30-day comment period, the Lenawee County Board of Commissioners held a public hearing to solicit public input on December 11, 2024. The Lenawee County Board of Commissioners approved the plan on December 11, 2024.

# IMPLEMENTATION

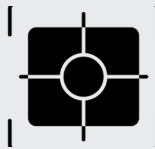
## GOALS AND OBJECTIVES

Goals and objectives offer a structured framework that helps recreation providers align their efforts and make well-informed decisions. The goals and objectives were designed to be practical and achievable within the financial, social, and physical constraints of the County.



### GOALS

provide direction and focus, guiding actions and decisions toward a desired result. They are typically part of a larger plan, serving as benchmarks for success and progress evaluation.



### OBJECTIVES

are a specific and attainable action or milestone directly supporting achieving a broader goal.

## GOAL 1: INFRASTRUCTURE IMPROVEMENTS

Advance capital infrastructure projects to enhance park areas across Lenawee County, ensuring they are safe, accessible, and visually appealing for all visitors.

### OBJECTIVES

- Improve existing facilities through replacement and upgrades to create a safe and attractive environment.
- Make universal accessibility a priority in both renovations and new construction projects.
- Develop Park facilities that meet current needs and secure assets for the future through thoughtful planning and improvements.
- Regularly gather feedback from park users and stakeholders to assess maintenance effectiveness and identify areas for improvement.

**Rationale:** *Improvements to the park existing structures provide for a safe and inviting location for residents to enjoy. Upgraded amenities assist in making the Parks more accessible to everyone, including those with mobility challenges. The survey data included many requests for “upgraded amenities, additional equipment, restrooms, benches, inclusive playground equipment, and many other requests”.*



## GOAL 2: PUBLIC AWARENESS

Enhance public awareness of Lenawee County parks through a range of communication initiatives

### OBJECTIVES

- Continue to update entrance signage at all County parks with consistent branding and wayfinding signage systems.
- Consistent use of social media to publicize County parks
- Update print brochure and distribute throughout the County
- Collaborate with various organizations (example: Visit Lenawee) to promote events and activities at County parks

**Rationale:** *Increased awareness of the County Parks can lead to higher usage of the facilities, leading to a stronger community connection. Survey respondents indicated many County residents were unaware of the County Parks and suggested various events at the locations including: “night sky events, bird watching events, festivals, any activities to bring families together, and races”. In addition, survey respondents showed an interest in either sponsoring a park project or being affiliated with a club or organization and were interested in using a county park.*



## GOAL 3: FISCAL RESPONSIBILITY

Prepare for future growth by implementing collaboration and making capital improvements while upholding a fiscal responsibility commitment.

### OBJECTIVES

- Reserve funding every year for capital improvement projects.
- Offer additional opportunities for donations and endowments to be made to County parks.
- Explore options to organize community fundraising events.
- Continue implementing a long-term financial plan, developing revenue generation and cost-effective operations

**Rationale:** *Lenawee County has implemented a successful Capital Improvement plan as part of the annual budget process that includes a comprehensive budget breakdown including all anticipated expenses. Collaborating with community organizations would not only entice visitors but may also be a possible avenue for revenue generation. Survey respondents suggested various fundraising options such as donation drives, QR codes for donations, memorial benches, business sponsorships, raffles, or competitive events.*

## GOAL 4: MAINTENANCE AND OPERATIONS

Maintain the functionality and upkeep of all facilities across the County Park system.

### OBJECTIVES

- Enhance the long-term sustainability of park features.
- Conduct regular inspections of park facilities and grounds to identify maintenance
- Collaborate with local businesses, nonprofit organizations, and community groups to supplement park maintenance efforts
- Prioritize safety by addressing hazards and ensuring facilities are in good condition
- Explore opportunities to extend the park operating hours and days

**Rationale:** *Lenawee County does not have a dedicated parks department and is currently managed by the building & grounds department. Regular maintenance ensures the facilities are in working condition, which reduces the risk of accidents. Providing a safe and enjoyable environment for residents impacts their overall experience. Survey respondents noted some playground equipment needs improvements, suggestions for increased trail maintenance, and updating the current facilities.*

## GOAL 5: PRESERVATION AND CONSERVATION

Promote preservation and conservation efforts in County Parks by incorporating sustainable practices.

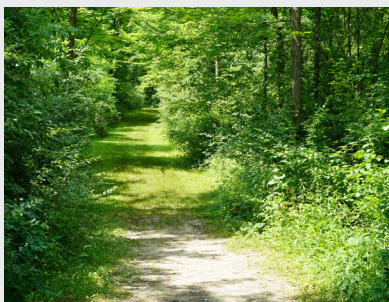
### OBJECTIVES

- Continue preventative measures to control invasive species and the spread of non-native plants
- Educate park visitors and the community about conservation's importance through signage and by publishing educational articles via social media or electronic platforms
- Continue to update park signage
- Forge partnerships with environmental organizations, academic institutions, and community groups to amplify conservation efforts through shared education, funding, and volunteer support

**Rationale:** *Establishing designated trails and specific areas for recreational activities is crucial for protecting sensitive environments from damage. By directing foot traffic and activities to these controlled zones, we minimize the risk of trampling and habitat disruption. Additionally, safeguarding native plant species and their habitats is vital for supporting local wildlife and maintaining the overall health of the park's ecosystems. This approach ensures that both recreational use and environmental conservation can coexist harmoniously.*

# OUR ACTION PLAN FOR THE NEXT 5 YEARS

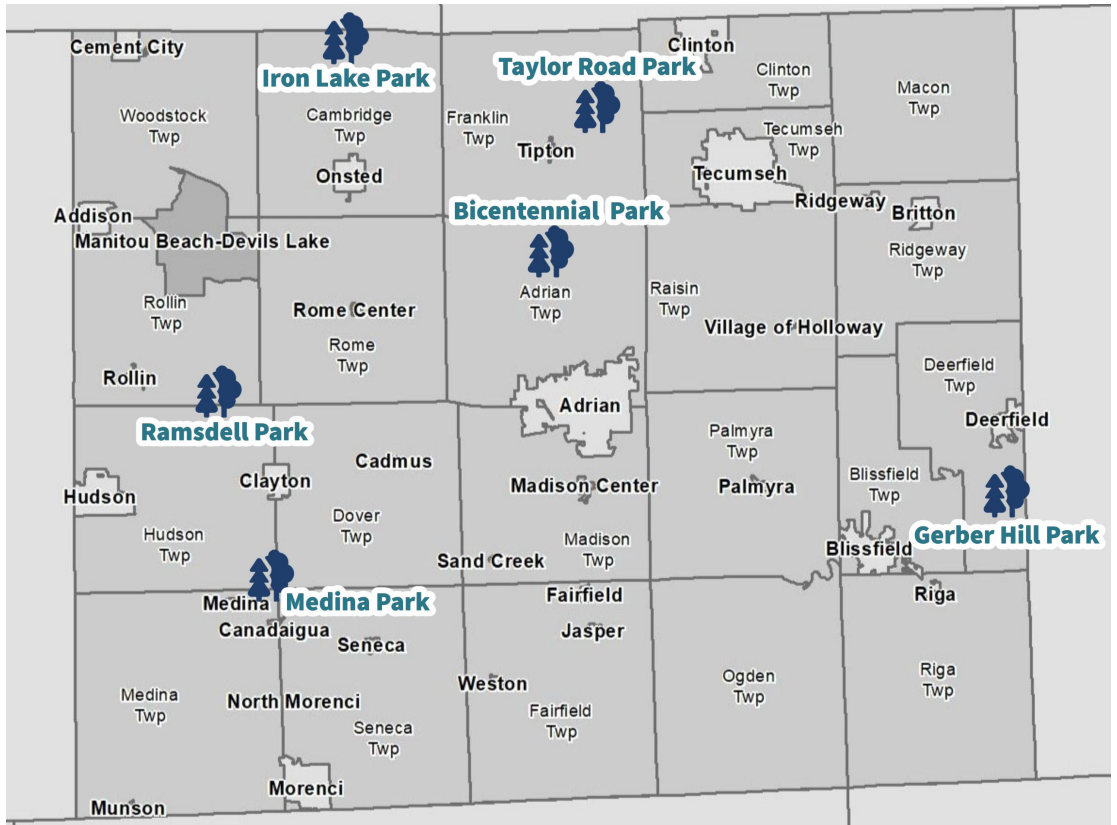
The action program is a financial planning and management tool that outlines proposed capital improvement projects and purchases by Lenawee County for the period between 2025 and 2029. These action items are specific and serve as an organizational strategy to achieve the goals outlined in the plan. The preparation of the other parks and recreation plan chapters influenced the listing of capital improvements. Due to limited park funding, the implementation of these items is scheduled over five years, with some yet to have a determined date. Additional projects and opportunities may be identified, which may require adjusting the project schedule as funding opportunities become available.



General funds will be used to maintain and operate all County Parks for 2025-2029. The following table indicates planned capital improvement projects funded by either the capital improvement fund allocation or grant funding.

FACILITY	YEAR	PROJECT	ESTIMATED EXPENSE	GOAL
<b>GERBER HILL PARK</b>	2025	Electric outlets for pavilions	\$20,000	1,3
	2025	Metal Roofing for North Pavilion	\$7,000	1,3,4
	2025	Gravel for Lots	\$5,000	1,3,4
	2028	Pickleball Court	\$10,000	1,3
	2028	Concrete reinforcement for pavilion posts	\$20,000	1,3,4
	TBD	Musical Playground	\$56,000	1,4
<b>RAMSDELL PARK</b>	2026	Metal roofing for house & garage	\$20,000	1,3,4
	2026	Metal siding for barn	\$30,000	1,3,4
	2026	Gravel for parking lot	\$5,000	1,3,4
	TBD	Playground Equipment	\$25,000	1,4
<b>MEDINA PARK</b>	2025	Replace existing basketball court with multi-purpose court for basketball and pickleball	\$60,000	1,3,4
	2027	Gravel for parking lot	\$5,000	1,3,4
	2027	Picnic table(s) and grill(s)	\$5,000	1,3,4
	2027	Concrete reinforcement for pavilion posts	\$20,000	1,3,4
	TBD	Playground Equipment	\$50,000	1,4
<b>TAYLOR ROAD PARK</b>	TBD	Create additional trails	\$7,500	1,4,5
	TBD	Improve trail signage	TBD	2,4,5
<b>IRON LAKE PARK</b>	TBD	Improved signage	TBD	2,4
<b>BICENTENNIAL PARK</b>	2029	Pickleball Court	\$30,000	1,3
	TBD	Inclusive Playground	\$75,000	1,4
	TBD	Trail Signage and Benches	TBD	2,4,5

  
**MAP #4-2**  
**LENAWEE COUNTY**  
**PARKS**



## Appendix A - Population Summary

### Demographics

The demographic composition of Lenawee County residents has an effect upon their recreational needs. For example:

- **Population History & Projections** – establish the need for general recreational facilities (standards for which are based upon the size of the population).
- **The Gender & Age of the Population** – further refine the need for general recreational facilities balanced among various age groups and gender interests.
- **Households & Families** – further refine the need for general recreational facilities balanced between family-oriented and individual activities.
- **Racial and Ethnic Minorities** – further refine the need for general recreational facilities balanced among the various interests of racial and ethnic groups.
- **The Disabilities of Residents** – establish the need for special recreation facilities and disability accommodations to general recreation facilities.
- **Income** – helps to illustrate the need for publicly-funded recreational facilities.

#### **Adrian and Tecumseh Urbanized Areas (UAs)**

*The Adrian Urbanized Area — as determined by the U.S. Census Bureau— comprises the City of Adrian and portions of Adrian and, Madison Townships. The Tecumseh Urbanized Area comprises the City of Tecumseh and portions of Raisin and Tecumseh Townships. (Please see Map A-1).*

### Population History

Lenawee County’s population comprised of 99,423 people in 2020 according to the US Census. The Adrian Urbanized Area had a population of 29,206 people and the Tecumseh Urbanized Area had a population of 13,684.<sup>1</sup> A total of 42,890 people lived in the Adrian and Tecumseh Urbanized Corridor. Prior to the 2020 Census, this area included the Village of Clinton and portions of Clinton Township. The Irish Hills Recreation Area was home to 15,428 people. Rural Lenawee County residents comprised 41,105 people.<sup>2</sup>

Population History										
<b>Lenawee County</b>	49,849	53,110	64,629	77,789	81,609	89,948	91,476	98,890	99,892	99,423
<b>Adrian and Tecumseh Urbanized Corridor<sup>3</sup></b>	22,023	24,942	32,671	42,093	44,631	48,545	49,990	56,109	57,445	42,890
<b>Irish Hills Recreation Area</b>	4,957	5,304	6,709	8,128	9,393	11,914	12,539	13,715	14,299	15,428
<b>Rural Lenawee County</b>	22,869	22,864	25,249	27,568	27,585	29,489	28,947	29,066	28,148	41,105
Source: U.S. Census Bureau & Region 2 Planning Commission										

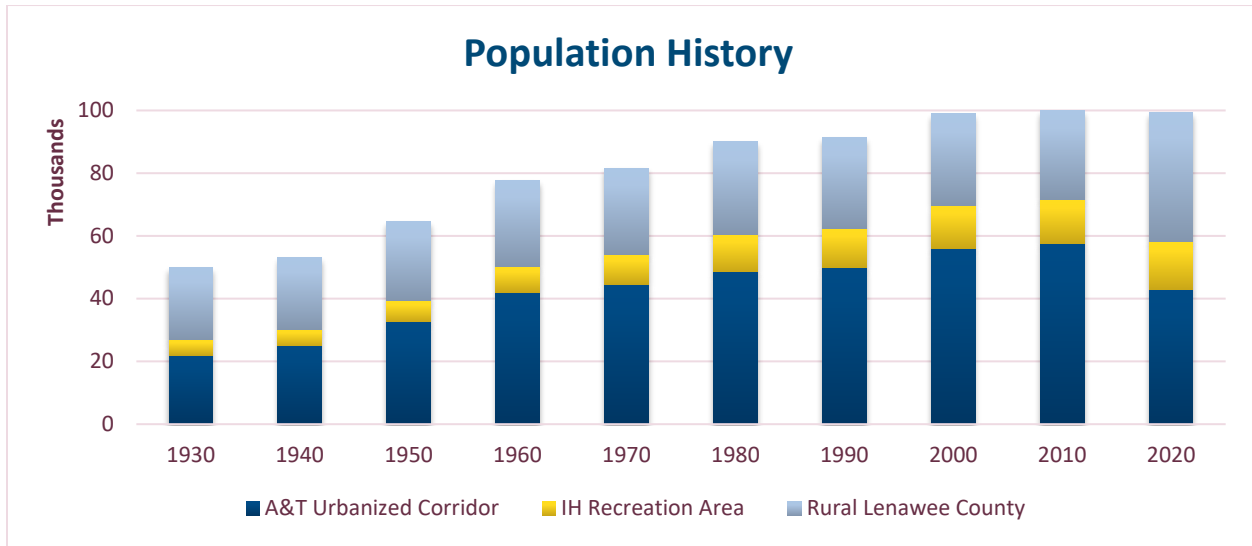
1 Please note that the shape and size of the Adrian Urban Cluster changes with each decennial census.

2 City, village, and township populations located in Rural Lenawee County are included in this total.

3 Included the Village of Clinton and portions of Clinton Township prior to 2020.

# Lenawee County

From 2010-2020, the County population slightly decreased by 0.47%. The population of the Adrian and Tecumseh Urbanized Corridor decreased by 25% from 2010-2020, however, this is due to the Village of Clinton no longer being considered “urbanized” by the U.S. Census Bureau due to new standards of how Urban Areas are calculated. These standards also resulted in Adrian and Tecumseh officially being considered separate Urban Areas instead of one single UA. This change also resulted in Rural Lenawee County’s population increasing by 46%. The Irish Hills Recreation Area population increased by 7.9% from 2010-2020, continuing a trend of population increase which has been happening since at least 1930.



## Population Projections

The 2050 population projections utilized in this plan are “based on previous trends as depicted in” historic U.S. Census data “and on the Regional Economic Models Inc. (REMI) forecast data developed for the Michigan Department of Transportation”.

Population Projections							
<b>Lenawee County</b>	99,423	100,586	101,329	101,522	101,068	99,918	99,471
<b>Adrian and Tecumseh Urbanized Corridor<sup>3</sup></b>	42,890	43,558	44,044	44,294	44,262	43,918	43,722
<b>Irish Hills Recreation Area</b>	15,428	15,730	15,968	16,121	16,170	16,105	16,033
<b>Rural Lenawee County</b>	41,105	41,298	41,317	41,107	40,636	39,895	39,716
Source: REMI & Region 2 Planning Commission							

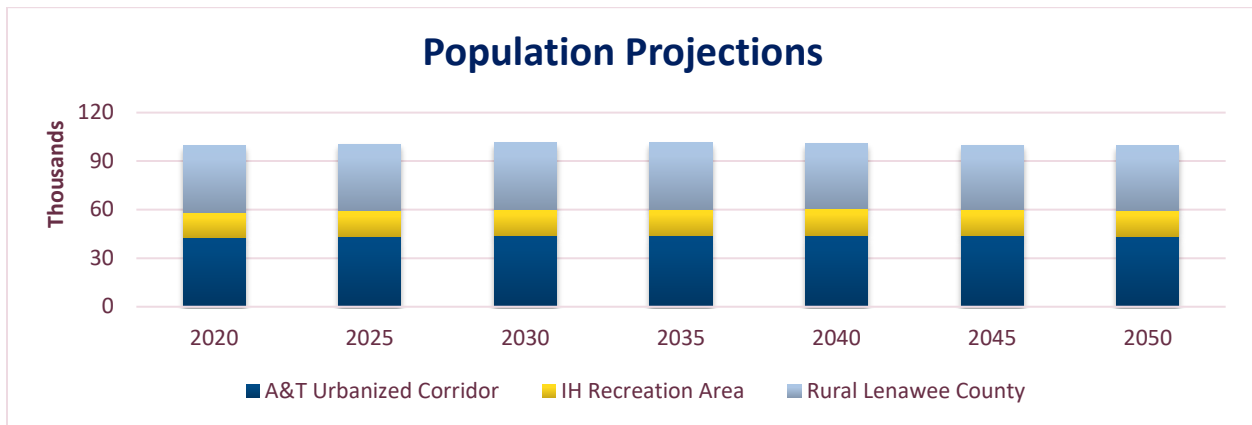
The Lenawee County population is projected to increase 1% from 2020-2025, increase 1% between 2025-2030, remain constant from 2030-2040, and decrease 1% from 2040-2050. The population in the Adrian and Tecumseh Urbanizing Corridor is projected to increase 2% between 2020-2025, increase 1% from 2025-2030, increase 1% between 2030-2035, remain constant from 2035-2040, decrease 1% from 2040-2050. The Irish Hills Recreation Area population is projected to increase 2% between 2020-2025, increase

# Lenawee County

## American Community Survey

The use of estimates provided by the U.S. Census Bureau's American Community Survey (ACS) provides more up-to-date demographics. Reporting jurisdictions, the size of the Rural Townships are provided five-year average estimates on a regular basis. The reporting period utilized for this plan is 2018-2022 (hereafter referred to simply as 2022).

2% from 2025-2030, increase 1% from 2030-2035, and remain constant between 2035-2050. The population in Rural Lenawee County is projected to remain constant from 2020-2030, decrease 1% from 2030-2035, decrease 1% from 2035-2040, and decrease 2% between 2040-2050.



## Gender

According to the 2022 American Community Survey (ACS), the population for Lenawee County was 98,567 in 2022. Of the 98,567 estimated residents, 50,312 are estimated to be male and 48,255 are estimated to be female. The ACS estimates that the ratio of males per 100 females (i.e., the sex ratio) was 104 for Lenawee County in 2022.

# Lenawee County

---

## The Age of the Population

The median age of all Lenawee County residents in 2022 was an estimated 42.3 years according to the American Community Survey.

It was estimated that in 2022:

- **Age 14 and younger** comprised 17% of the countywide population, for a total of 16,227 people.
- **Ages 15 to 34** accounted for 24% of the countywide population, for a total of 23,994 people.
- **Ages 35 to 54** comprised 25% of the countywide population, for a total of 24,590 people.
- **Ages 55 to 74** accounted for 26% of the countywide population, for a total of 25,880 people.
- **Ages 75 and older** comprised 8% of the countywide population, for a total of 7,876 people.

Based on these estimates, the largest age group in Lenawee County is Ages 55 to 74, with Ages 35 to 54 and Ages 15 to 34 closely following it.

## Households and Families

There were an estimated 38,264 households in Lenawee County in 2022, according to the ACS. Families comprised 65% of Lenawee County households, for a total of 24,993. It was estimated that 31% of householders live alone.

## Racial and Ethnic Minorities

The majority of Lenawee County residents were White and non-Hispanic in 2022 according to the ACS.

It was estimated that in 2022:

- **White** residents comprised 85% of the countywide population, for a total of 83,812 people.
- **Hispanic** residents accounted for 9% of the countywide population, for a total of 8,736 people.
- **Black or African American** residents comprised 2% of the countywide population, for a total of 2,348 people.
- **Other races** accounted for 1% of the countywide population, for a total of 458 people.
- **Two or more races** comprised 3% of the countywide population, for a total of 3,213 people.

## The Disabilities of Residents

A small, but significant portion of Lenawee County residents are disabled by a hearing, vision, cognitive, ambulatory, or self-care difficulty. Disabled individuals comprised a total of 12,434 residents (13% of the population), with some having more than one disability. It was estimated that 3,325 residents have a

### **Irish Hills (IH) Recreation Area**

*The Irish Hills and the Manitou Beach-Devils Lake Census Designated Place (CDP) are located in the northwestern corner of Lenawee County. Those destinations host a number of lakes with adjacent residential neighborhoods which are transitioning from seasonal to full-time occupation. Collectively, the Townships of Cambridge, Franklin, Rollin, and Woodstock and the Villages of Addison, Cement City, and Onsted comprise the Recreation Area (please see Map A-1).*

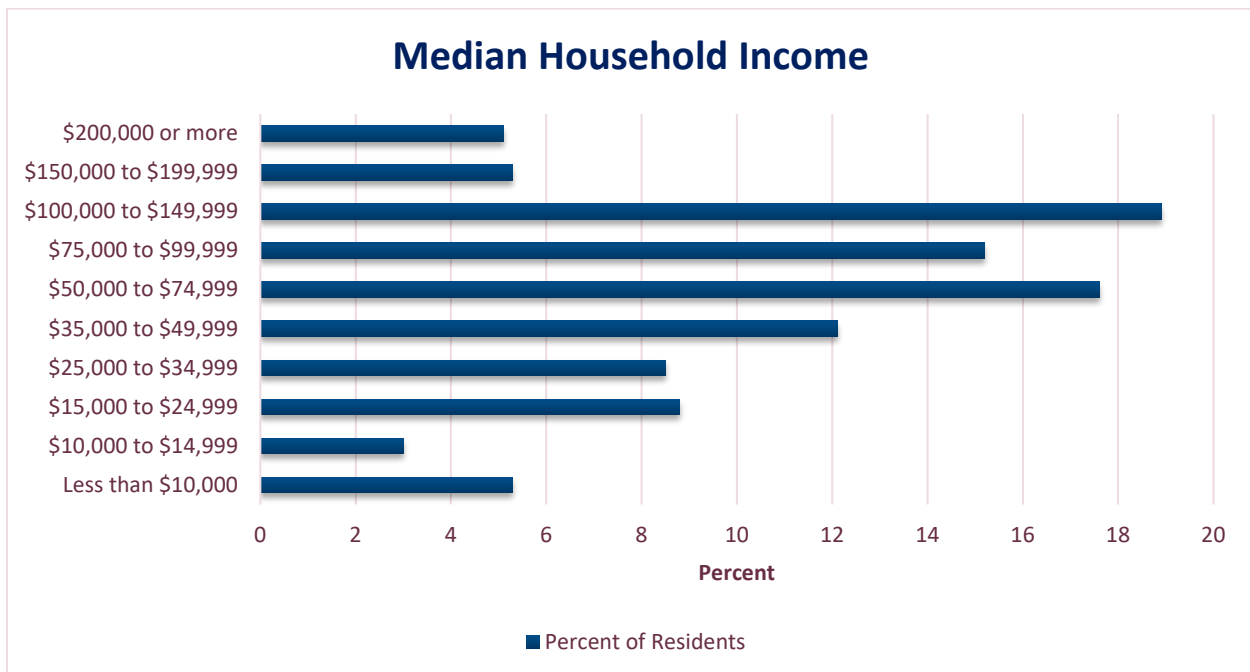
## Lenawee County

hearing difficulty, 2,326 have a vision difficulty, 4,854 have a cognitive disability, 5,845 have an ambulatory disability, 2,289 have a self-care disability, and 4,803 have an independent living disability.

Age Range	Total	Percent
< 5 Years	42	0.9%
5-17 Years	703	4.7%
18-34 Years	1,857	9.5%
35-64 Years	4,868	13.1%
65-75 Years	1,830	15.6%
>75 Years	3,134	42.6%
<b>Total Disabled</b>	<b>12,434</b>	<b>100%</b>

## Income

The estimated median household income was \$67,267 countywide in 2022, according to the ACS.<sup>3,4</sup> The estimated median family income was \$81,390. The estimated median nonfamily income was \$32,824.



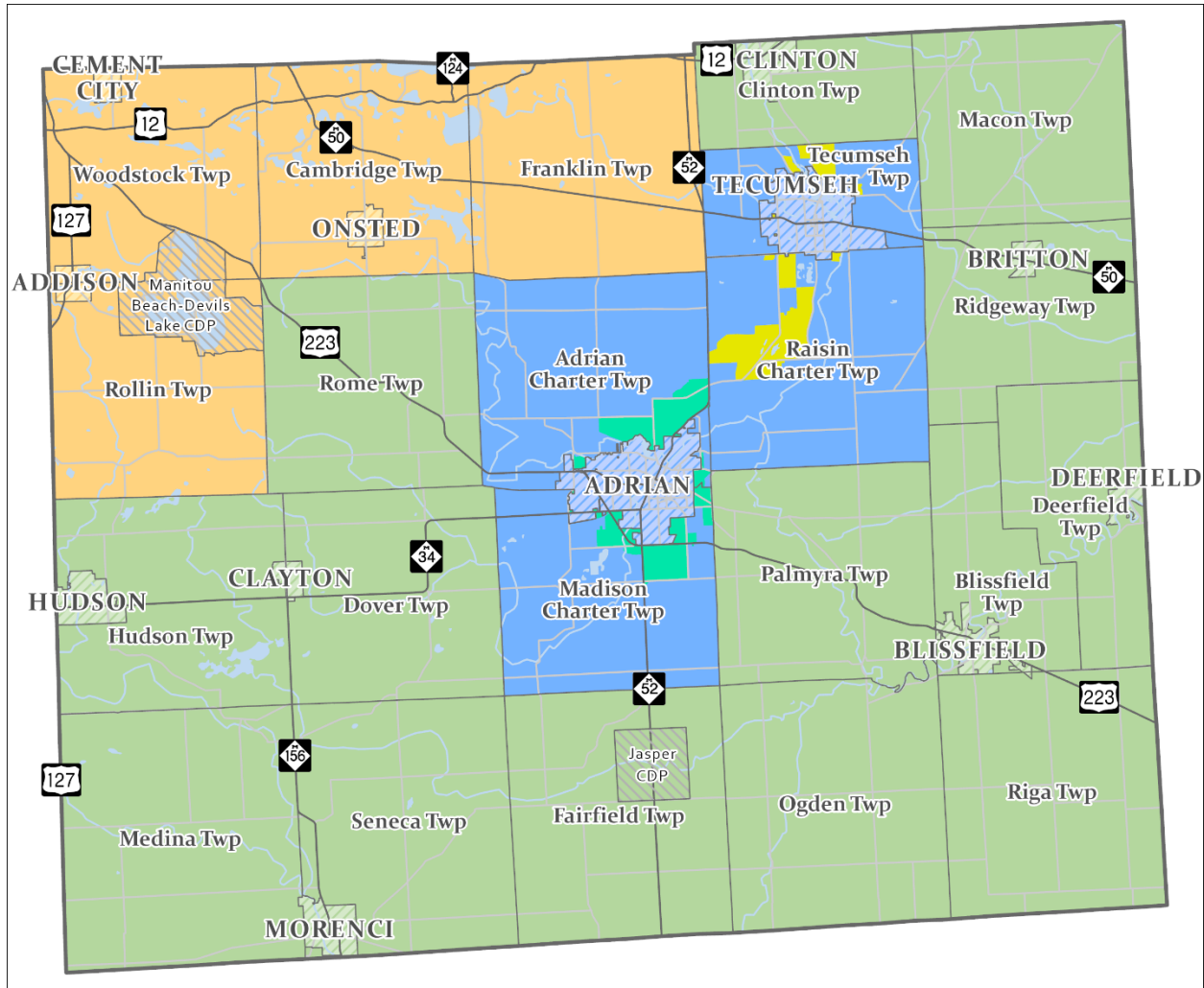
Households that were estimated by the ACS to have made less than \$25,000 a year in 2022 accounted for 17% of households countywide. Households that were estimated to have made between \$25,000 and \$49,999 a year accounted for 21% of households countywide. Households that were estimated to have made between \$50,000 and \$99,999 a year accounted for 33% of households countywide. Households that were estimated to have made \$100,000 or more accounted for 29% of households countywide.

<sup>3</sup> Household income, according to the American Community Survey (ACS), includes “income of the householder and all other people 15 years and older in the household, whether or not they are related to the householder.”

<sup>4</sup> The ACS defines median household income as the “point that divides the household income distribution into halves, one-half with income above the median and the other with income below the median. The median is based on the income distribution of all households, including those with no income.”

# Lenawee County

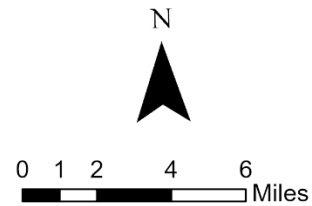
Map #A-1  
Lenawee County Planning Regions



## Lenawee County Planning Regions

### Legend

- Adrian and Tecumseh Urbanized Corridor
- Rural Lenawee County
- Irish Hills Recreation Area
- Cities and Villages
- Adrian Urban Area
- Tecumseh Urban Area



**Region 2**  
PLANNING COMMISSION  
Serving Hillsdale, Jackson & Lenawee Counties